

TACAN LDK Chan 125 (117.8)	APP CRS 241°	Rwy ldg 6498 TDZE 164 Apt Elev 170
--	------------------------	---

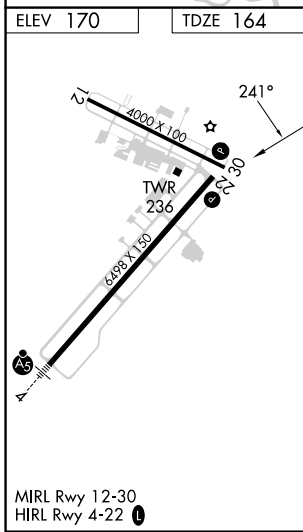
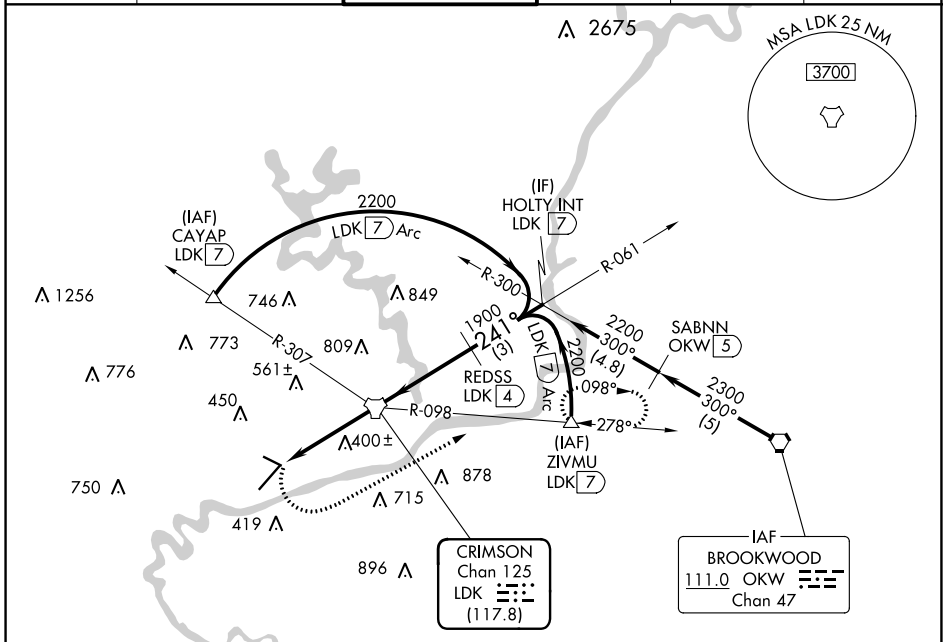
TACAN RWY 22

TUSCALOOSA NTL (TCL)

▼ Circling Rwy 12, 30 NA at night.
▲ Rwy 22 helicopter visibility reduction below $\frac{3}{4}$ SM NA.

MISSED APPROACH: Climbing left turn to 2300 on heading 060° and LDK TACAN R-098 to ZIVMU/LDK 7 DME and hold.

ASOS 132.825	BIRMINGHAM APP CON 120.15 269.25	TUSCALOOSA TOWER ★ 126.3 (CTAF) 0 256.7	GND CON 121.8 257.95	CLNC DEL 120.775	UNICOM 122.95
------------------------	--	--	--------------------------------	----------------------------	-------------------------



ELEV 170	TDZE 164	▲ 1290			
2300	LDK R-098	ZIVMU ▲	LDK TACAN	REDSS LDK 4	HOLTY INT LDK 7
hdg 060°					
	LDK 4	LDK 2.2	LDK 2.2	LDK 4	LDK 7
	1.8 NM	2.2 NM	4 NM	3 NM	
CATEGORY	A	B	C	D	
S-22	800-1	636 (700-1)	800-1 $\frac{3}{4}$	636 (700-1 $\frac{3}{4}$)	
C CIRCLING	800-1	630 (700-1)	960-2 $\frac{1}{4}$ 790 (800-2 $\frac{1}{4}$)	960-2 $\frac{1}{2}$ 790 (800-2 $\frac{1}{2}$)	

SE-4, 26 DEC 2024 to 23 JAN 2025

SE-4, 26 DEC 2024 to 23 JAN 2025