

FAIRFIELD, CALIFORNIA

RNAV (GPS) RWY 03R

WAAS CH 98057 W03B	APCH CRS 035°	Rwy ldg TDZE 59 Arprt Elev 63	10,995
---------------------------------	-------------------------	---	---------------

- (USAF)

TRAVIS AFB (KSUU)

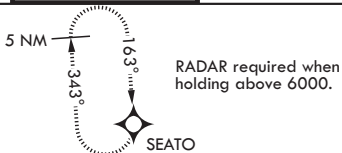
RNP APCH

MISSED APPROACH: Climb to 4500 direct FOLNO, track 308° to SEATO and hold, continue climb-in-hold to 4500.

✦ * Circling NA NW of RWY 3L-21R.

ATIS 135.55 292.125	APP CON 119.9 322.325 (S) 126.6 281.45 (N)	TOWER 120.75 254.4	GND CON 121.8 289.4	CLNC DEL 127.55 335.8
-------------------------------	--	------------------------------	-------------------------------	---------------------------------

For uncompensated Baro-VNAV systems, LNAV/VNAV NA below -15°C or above 54°C.



2783

FOLNO

WUSMO

(FAF) LUDEC

HEIDY

2500

1900

1159

(IF/IAF) HABAL

3000

035°

253

427

306

199

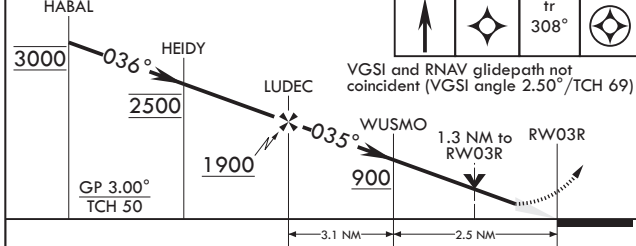
RW03R

MSA RW03R 2.5 NM

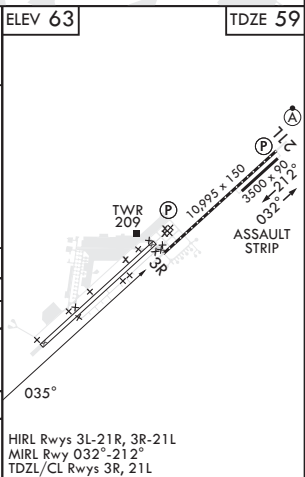
5100

EMERG SAFE ALT 100 NM 12,600

HABAL	4500	FOLNO	tr 308°	SEATO	ELEV 63	TDZE 59
-------	------	-------	---------	-------	---------	---------



VGSI and RNAV glidepath not coincident (VGSI angle 2.50°/TCH 69)



CATEGORY	A	B	C	D	E
LPV DA	259/40		200	(200-¾)	
LNAV/VNAV DA	340/45 281 (300-¾)	351/45 292 (300-¾)	359/45 300 (300-¾)	370/45	311 (400-¾)
LNAV MDA	460/55	401 (400-1)	460/60	401	(400-1½)
✦ CIRCLING*	560-1 497 (500-1)	660-1 597 (600-1)	1100-3 1037 (1100-3)	1200-3 1137 (1200-3)	

HIRL Rwys 3L-21R, 3R-21L
MIRL Rwy 032°-212°
TDZL/CL Rwys 3R, 21L

FAIRFIELD, CALIFORNIA

38°16'N - 121°55'W

TRAVIS AFB (KSUU)

Orig 27JAN22

RNAV (GPS) RWY 03R

SW-2, 26 DEC 2024 to 23 JAN 2025

SW-2, 26 DEC 2024 to 23 JAN 2025