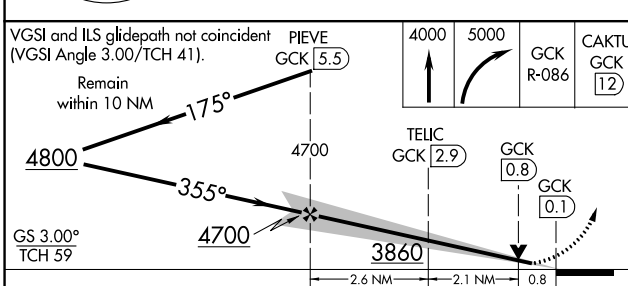
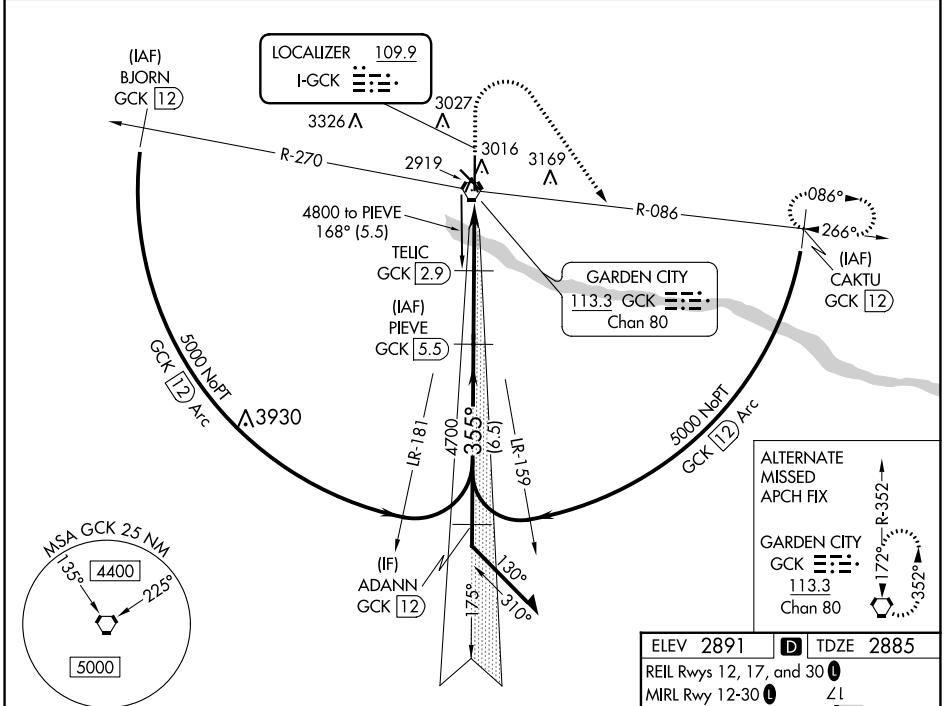


LOC I-GCK 109.9	APP CRS 355°	Rwy ldg 7299
		TDZE 2885
		Apt Elev 2891

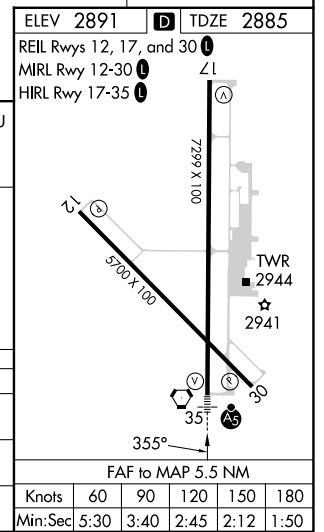
ILS or LOC RWY 35

GARDEN CITY RGNL (GCK)

DME required.		MALSR	MISSED APPROACH: Climb to 4000 then climbing right turn to 5000 on GCK VORTAC R-086 to CAKTU/GCK VORTAC 12 DME and hold.	
<p>▼ For inop ALS, increase S-LOC 35 Cats C/D visibility to 7/8 SM.</p> <p>▲</p>				
ASOS 121,325	KANSAS CITY CENTER 125.2 285,425	GARDEN CITY TOWER* 118.15 (CTAF) 0 254.4	GND CON 119.0 254.4	UNICOM 122.95



CATEGORY	A	B	C	D
S-ILS 35		3085-1/2	200 (200-1/2)	
S-LOC 35		3180-1/2	295 (300-1/2)	
CIRCLING	3320-1 429 (500-1)	3360-1 469 (500-1)	3480-1 1/2 589 (600-1 1/2)	3480-2 589 (600-2)



NC-2, 26 DEC 2024 to 23 JAN 2025

NC-2, 26 DEC 2024 to 23 JAN 2025