

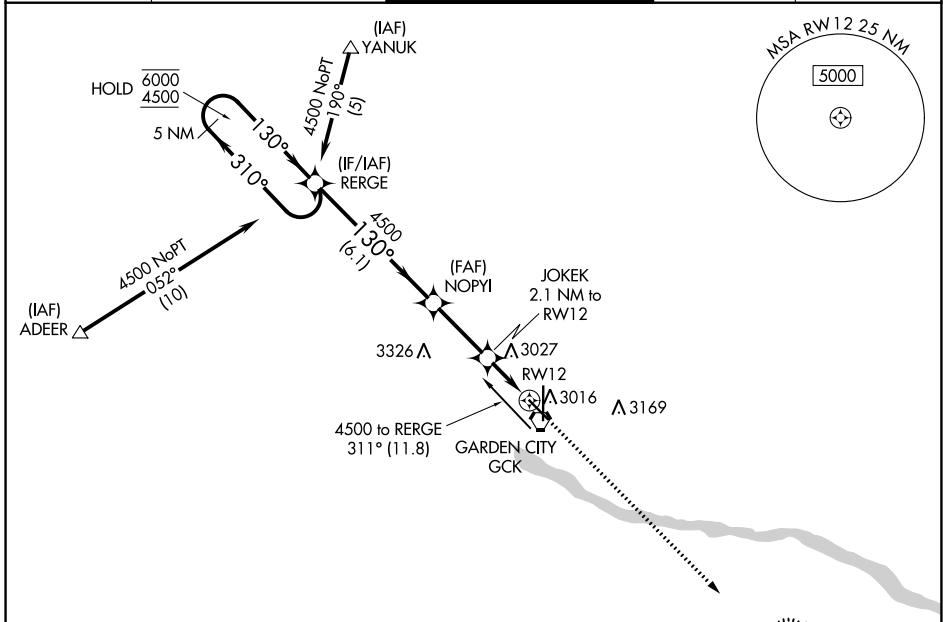
WAAS CH 77803 W12A	APP CRS 130°	Rwy ldg TDZE Apt Elev	5700 2891 2891
--	------------------------	-----------------------------	---

RNAV (GPS) RWY 12

GARDEN CITY RGNL (GCK)

RNP APCH - GPS.		MISSED APPROACH: Climb to 4600 direct ORECA and hold.	
<p>▼ For uncompensated Baro-VNAV systems, ▲ procedure NA below -20°C or above 54°C.</p>			

ASOS 121,325	KANSAS CITY CENTER 125.2 285.425	GARDEN CITY TOWER* 118.15 (CTAF) 0 254.4	GND CON 119.0 254.4	UNICOM 122.95
------------------------	--	--	-------------------------------	-------------------------



NC-2, 26 DEC 2024 to 23 JAN 2025

NC-2, 26 DEC 2024 to 23 JAN 2025

ELEV 2891	D TDZE 2891
-----------	--------------------

Diagram showing the RWY 12 approach segment. Key features include: Holding Pattern at RERGE (6000/4500 ft), Final Approach to RWY 12 (3620 ft), and Tower location (TWR 2944, 2941). Distances and altitudes are clearly marked.

REIL Rwy 12, 17 and 30
MIRL Rwy 12-30
HIRL Rwy 17-35

<p>5 NM Holding Pattern</p> <p>6000 ← 310° → 4500</p> <p>GP 3.00° TCH 47</p>		<p>4500</p> <p>JOKEK 2.1 NM to RWY 12</p> <p>3620</p> <p>1 NM to RWY 12</p>		<p>4600</p> <p>ORECA</p>	
		6.1 NM	2.8 NM	1.2 NM	1 NM
CATEGORY	A	B	C	D	
LPV DA	3141-1		250 (300-1)		
LNAV/VNAV DA	3141-1		250 (300-1)		
LNAV MDA	3240-1		349 (400-1)		
C CIRCLING	3320-1 429 (500-1)	3360-1 469 (500-1)	3480-1½ 589 (600-1½)	3480-2 589 (600-2)	