

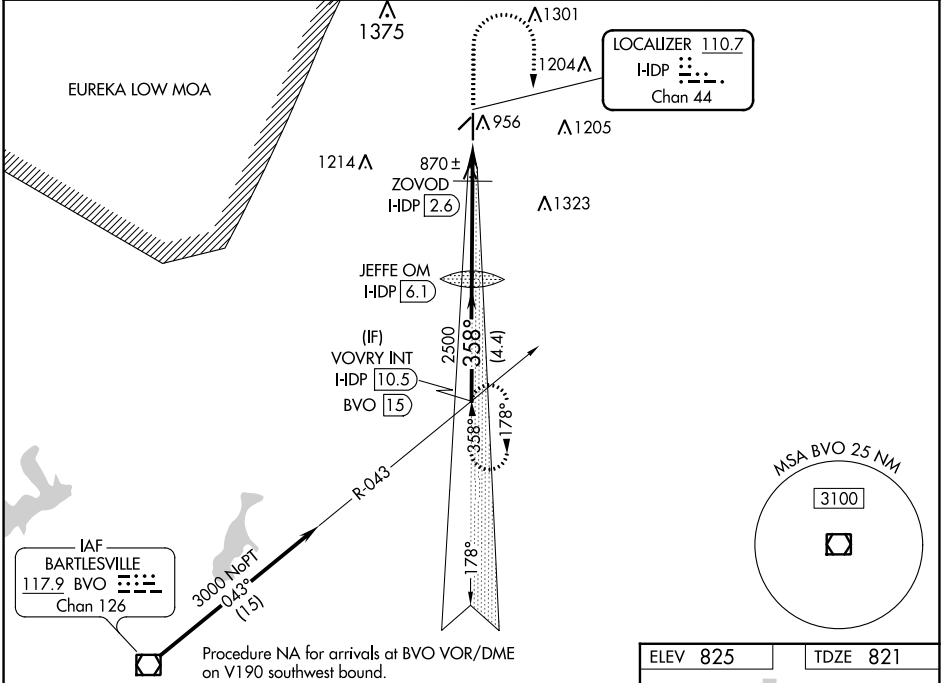
LOC/DME I-DP <b>110.7</b> Chan <b>44</b>	APP CRS <b>358°</b>	Rwy Idg <b>5501</b> TDZE <b>821</b> Apt Elev <b>825</b>
--	------------------------	---

# ILS or LOC RWY 35

INDEPENDENCE MUNI (IDP)

<b>NA</b> Circling Rwy 4, 22 NA at night.	MALS R	MISSED APPROACH: Climb to 1500 then climbing right turn to 3000 on heading 179° to intercept BVO VOR/DME R-043 to VOVRY INT and hold.
---	--------	---

AWOS-3PT <b>118.525</b>	KANSAS CITY CENTER <b>128.6 282.325</b>	CLNC DEL <b>121.65</b>	UNICOM <b>123.05 (CTAF)</b>
----------------------------	--	---------------------------	--------------------------------



NC-2, 26 DEC 2024 to 23 JAN 2025

NC-2, 26 DEC 2024 to 23 JAN 2025

VOVRY INT I-DP 10.5 BVO 15	JEFFE OM HDP 6.1	1500	3000	BVO R-043	VOVRY INT
3000	2461	ZOVOD HDP 2.6	I-DP 1.9	I-DP 1.1	
GS 3.00° TCH 42	2500	1340			
	4.4 NM	3.5 NM	0.7 NM	0.8 NM	
CATEGORY	A	B	C	D	
S-ILS 35	1021-1/2		200 (200-1/2)		
S-LOC 35	1340-1/2 519 (600-1/2)		1340-1 519 (600-1)		
<b>C</b> CIRCLING	1340-1 515 (600-1)		1340-1 1/2 515 (600-1/2)		1680-2 3/4 855 (900-2 3/4)
ZOVOD FIX MINIMUMS					
S-LOC 35	1120-1/2		299 (300-1/2)		
<b>C</b> CIRCLING	1280-1 455 (500-1)		1340-1 1/2 515 (600-1/2)		1680-2 3/4 855 (900-2 3/4)

