

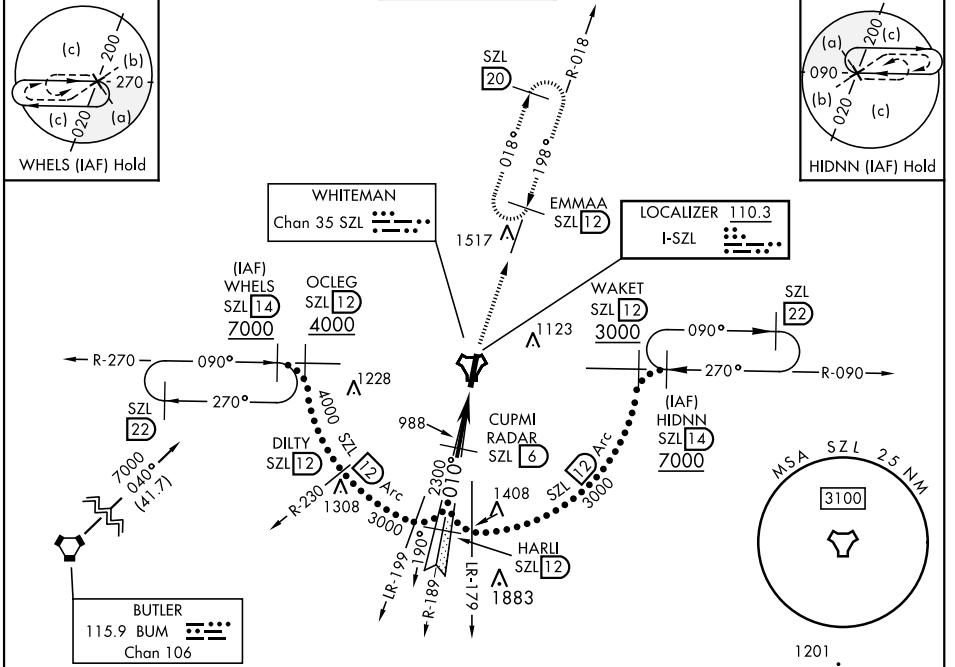
KNOB NOSTER, MISSOURI

HI-ILS or LOC Z RWY 1

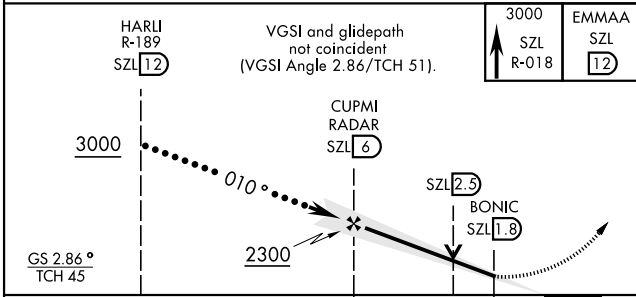
LOC I-SZL 110.3	APCH CRS 010°	Rwy Idg 12,400 TDZE 837 Arprt Elev 871	AL-496 [USAF]	WHITEMAN AFB (KSZL)
---------------------------	-------------------------	---	---------------	---------------------

RADAR or DME required.	ALSF-1 (A1)	MISSED APPROACH: Climb to 3000 via SZL TACAN R-018 to EMMAA and hold.
<p>▼ * When ALS inop, increase CAT CDE RVR to 40 and vis to ¾ mile.</p> <p>** When ALS inop, increase CAT CDE vis to 1¼ miles.</p> <p>*** Circling not authorized W of Rwy 1-19.</p>		

ATIS ★ 118.725 239.025	APP CON ★ 127.45 284.0	TOWER ★ 132.4 318.8	GND CON ★ 119.125 275.8	CLNC DEL ★ 121.75 335.8	ASR
----------------------------------	----------------------------------	-------------------------------	-----------------------------------	-----------------------------------	-----



EMERG SAFE ALT 100 NM 4700



ELEV 871	TDZE 837
HRL Rwy 1-19 (A1) 010°	
FAF to MAP 4.2 NM	
Knots	120 140 160 180 200
Min:Sec	2:06 1:48 1:35 1:24 1:16

CATEGORY	C	D	E
S-ILS 1*	1037/24	200	(200-½)
S-LOC 1**	1260/40	423	(400-¾)
*** CIRCLING	1340-1½ 469 (500-1½)	1460-2	589 (600-2)

KNOB NOSTER, MISSOURI 38°44'N-93°33'W WHITEMAN AFB (KSZL)

Amdt 1 10OCT19

HI-ILS or LOC Z RWY 1

NC-3, 26 DEC 2024 to 23 JAN 2025

NC-3, 26 DEC 2024 to 23 JAN 2025