

KNOB NOSTER, MISSOURI

RNAV (GPS) RWY 1

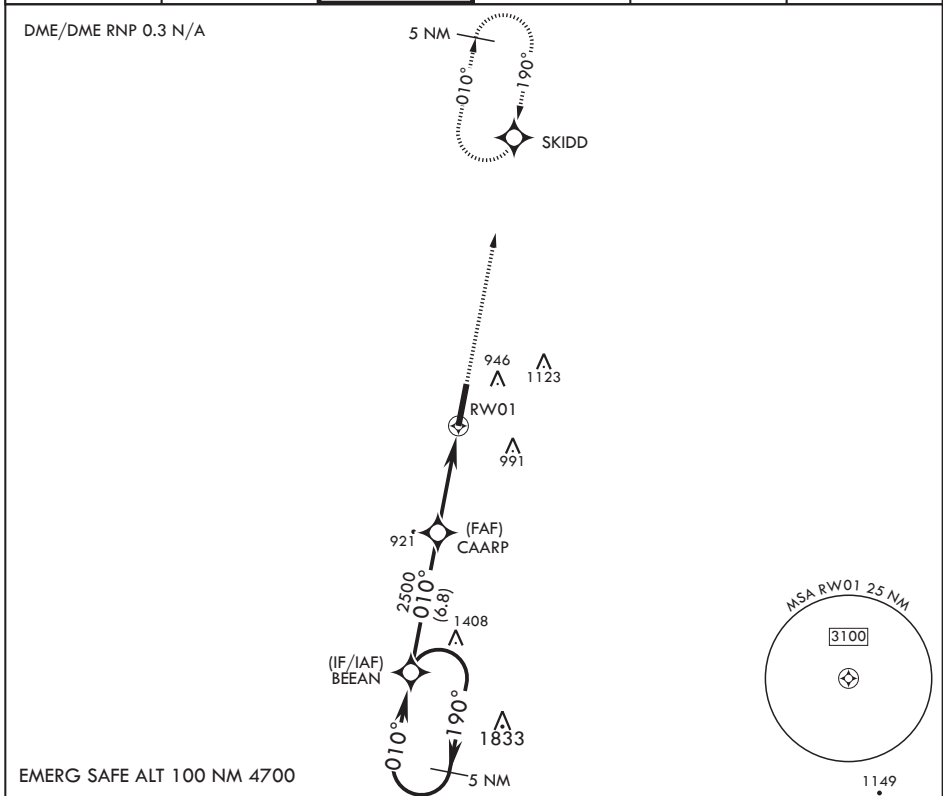
APCH CRS 010°	Rwy Idg 12,400
	TDZE 837
	Arprt Elev 871

AL-496 (USAF)

WHITEMAN AFB (KSZL)

▼ * When ALS inop, increase CAT AB RVR to 55 and vis to 1 mile, CAT CDE vis to 1 3/8 miles. ** Circling not authorized W of Rwy 1-19.	ALSF-1 	MISSED APPROACH: Climb to 3000 direct SKIDD and hold.

ATIS* 118.725 239.025	APP CON* 127.45 284.0	TOWER* 132.4 318.8	GND CON* 119.125 275.8	CLNC DEL* 121.75 335.8	ASR
---------------------------------	---------------------------------	------------------------------	----------------------------------	----------------------------------	-----



5 NM Holding Pattern BEEAN 3000 190° ← 010° → 2.92° ∠ TCH 51	CAARP 2500		RWY 01 1.3 NM to RWY 01 5.2 NM		3000 SKIDD ELEV 871	TDZE 837
CATEGORY LNAV MDA*	A	B	C	D	E	
	1280/24	443 (500-½)	1280/45	443	(500-¾)	
CIRCLING**	1300-1 429 (500-1)	1340-1 469 (500-1)	1340-1½ 469 (500-1½)	1460-2	589 (600-2)	

HIRL all Rwys

010°

KNOB NOSTER, MISSOURI

38°44'N - 93°33'W

WHITEMAN AFB (KSZL)

Amdt 6 10OCT19

RNAV (GPS) RWY 1

NC-3, 26 DEC 2024 to 23 JAN 2025

NC-3, 26 DEC 2024 to 23 JAN 2025