

KNOB NOSTER, MISSOURI

# TACAN Y RWY 19

TACAN SZL Chan 35	APCH CRS 198°	Rwy Idg TDZE Arprt Elev	12,400 871 871
----------------------	------------------	-------------------------------	----------------------

AL-496 (USAF)

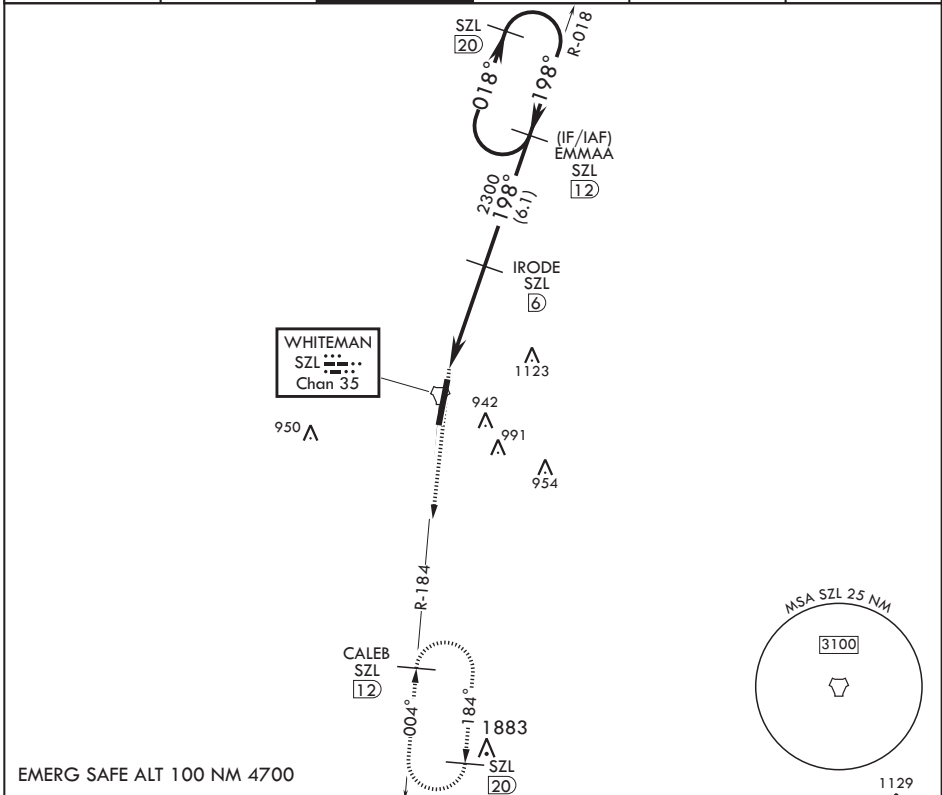
WHITEMAN AFB (KSZL)

▼ \* When ALS inop, increase CAT AB RVR to 55 and vis to 1 mile, CAT CDE RVR to 60 and vis to 1 1/8 miles.  
 \*\* Circling not authorized W of Rwy 1-19.

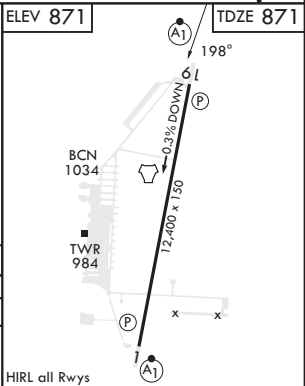
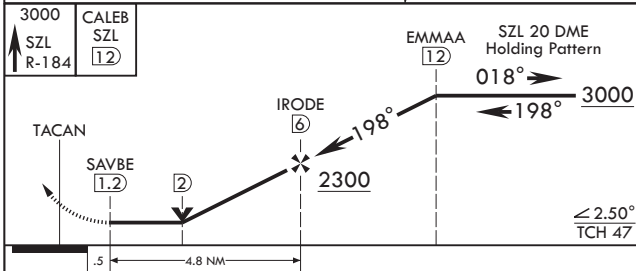
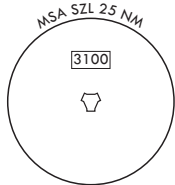


MISSED APPROACH: Climb to 3000 via SZL TACAN R-184 to CALEB and hold.

ATIS* 118.725 239.025	APP CON* 127.45 284.0	TOWER* 132.4 318.8	GND CON* 119.125 275.8	CLNC DEL* 121.75 335.8	ASR
--------------------------	--------------------------	-----------------------	---------------------------	---------------------------	-----



EMERG SAFE ALT 100 NM 4700



3000 SZL R-184	CALEB SZL 12	EMMAA 12	SZL 20 DME Holding Pattern	ELEV 871	TDZE 871
TACAN	SAVBE 1.2	2	IRODE 6	2300	198°
.5		4.8 NM		3000	018°
				198°	3000
				≤ 2.50° TCH 47	
CATEGORY	A	B	C	D	E
S-19*	1260/24 389 (400-½)		1260/40	389 (400-¾)	
CIRCLING**	1300-1 429 (500-1)	1340-1 469 (500-1)	1340-1½ 469 (500-1½)	1460-2 589 (600-2)	

KNOB NOSTER, MISSOURI  
Amdt 1 07NOV19

38°44'N - 93°33'W

WHITEMAN AFB (KSZL)

# TACAN Y RWY 19

NC-3, 26 DEC 2024 to 23 JAN 2025

NC-3, 26 DEC 2024 to 23 JAN 2025