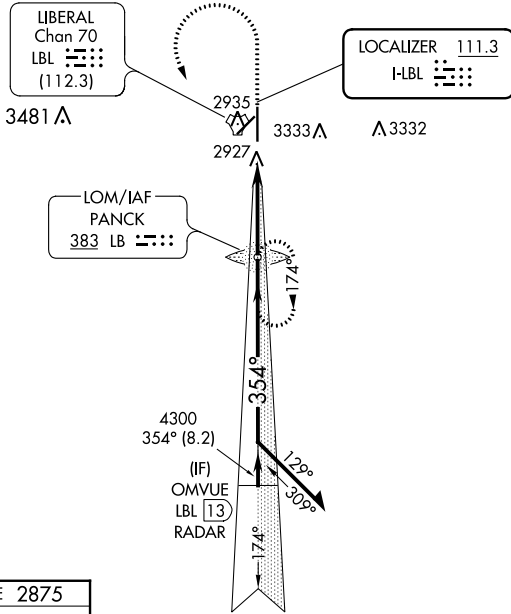


LOC I-LBL <b>111.3</b>	APP CRS <b>354°</b>	Rwy Idg TDZE Apt Elev	<b>7105</b> <b>2875</b> <b>2886</b>
---------------------------	------------------------	-----------------------------	---

**ILS or LOC RWY 35**  
LIBERAL MID-AMERICA RGNL (L.B.L)

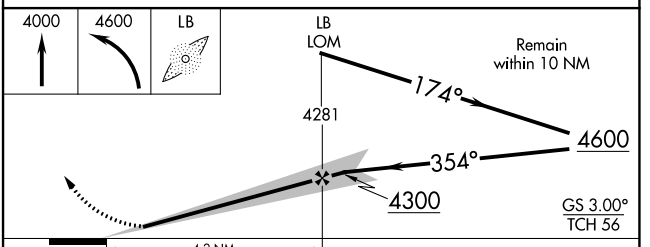
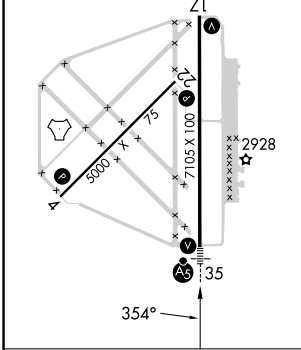
ADF or RADAR required.	MALS R	MISSED APPROACH: Climb to 4000 then climbing left turn to 4600 direct PANCK LOM and hold.
<b>V</b> <b>A</b> Circling NA east of Rwy 17-35. For inop ALS, increase S-LOC 35 Cats C/D visibility to ½ SM.		

AWOS-3PT <b>118.375</b>	KANSAS CITY CENTER <b>134.0 257.625</b>	UNICOM <b>122.8 (CTAF)</b>
----------------------------	--	-------------------------------



ELEV 2886	<b>D</b>	TDZE 2875
-----------	----------	-----------

REIL Rwys 4, 17 and 22  
MIRL Rwy 4-22  
HIRL Rwy 17-35



CATEGORY	A	B	C	D
S-ILS 35		3075-½	200 (200-½)	
S-LOC 35		3180-½	305 (300-½)	
<b>C</b> CIRCLING	3280-1 394 (400-1)	3400-1 514 (600-1)	3400-1½ 514 (600-1½)	3460-2 574 (600-2)

NC-2, 26 DEC 2024 to 23 JAN 2025

NC-2, 26 DEC 2024 to 23 JAN 2025