

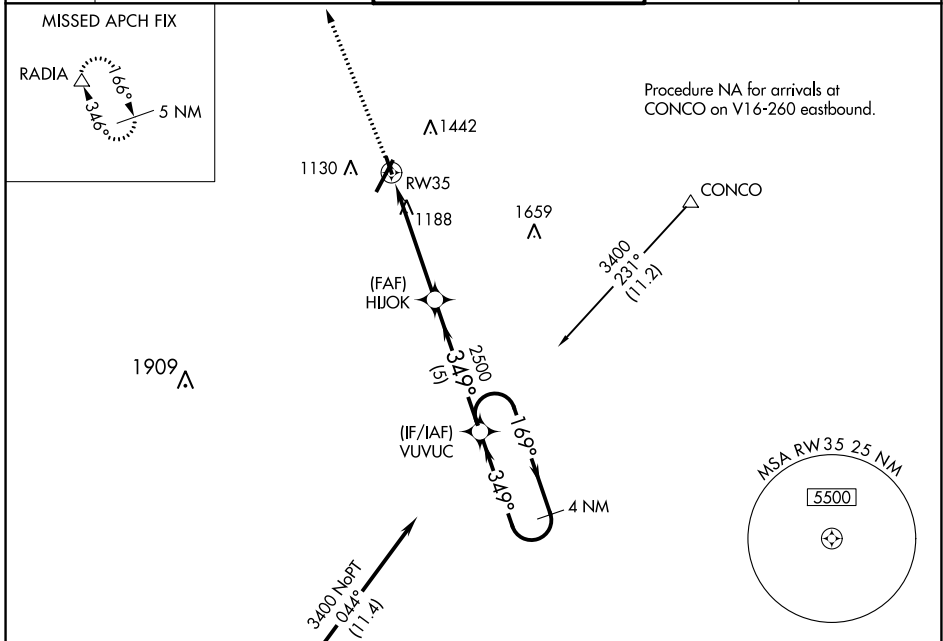
WAAS CH <b>93634</b> <b>W35A</b>	APP CRS <b>349°</b>	Rwy Idg TDZE Apt Elev	<b>3386</b> <b>933</b> <b>938</b>
--	------------------------	-----------------------------	---

# RNAV (GPS) RWY 35

LYNCHBURG RGNL/PRESTON GLENN FLD (LYH)

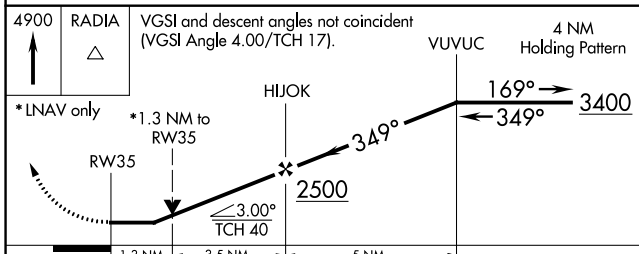
RNP APCH.	<p>▼ Circling Rwy 17 NA at night. ▲ Rwy 35 helicopter visibility reduction below ¾ SM NA.</p>	MISSED APPROACH: Climb to 4900 direct RADIA and hold.
-----------	---	---

ATIS <b>119.8</b>	ROANOKE APP CON <b>135.0 254.325</b>	LYNCHBURG TOWER ★ <b>127.65 (CTAF) 257.8</b>	GND CON <b>121.9</b>	UNICOM <b>122.95</b>
----------------------	---	---	-------------------------	-------------------------

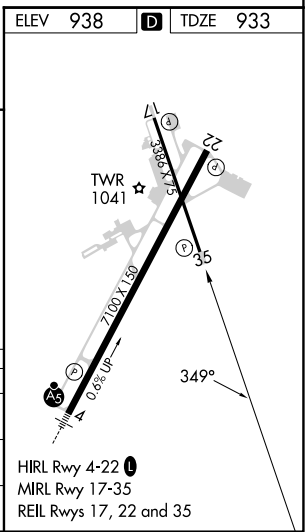


Procedure NA for arrivals at SYCAM on V469 southbound.

4900 RADIA VGS1 and descent angles not coincident (VGS1 Angle 4.00/TCH 17). 4 NM Holding Pattern



CATEGORY	A	B	C	D
LP MDA	1480-1	547 (600-1)		NA
RNAV MDA	1500-1	567 (600-1)		NA
CIRCLING	1660-1 722 (800-1)	1780-1 ¼ 842 (900-1 ¼)		NA



NE-3, 26 DEC 2024 to 23 JAN 2025

NE-3, 26 DEC 2024 to 23 JAN 2025