

EDWARDS, CALIFORNIA

# HI-ILS or LOC/DME Z RWY 23L

LOC I-EDW <b>110.1</b>	APCH CRS <b>226°</b>	Rwy Idg TDZE Arprt Elev <b>15,024</b> <b>2286</b> <b>2311</b>
---------------------------	-------------------------	--

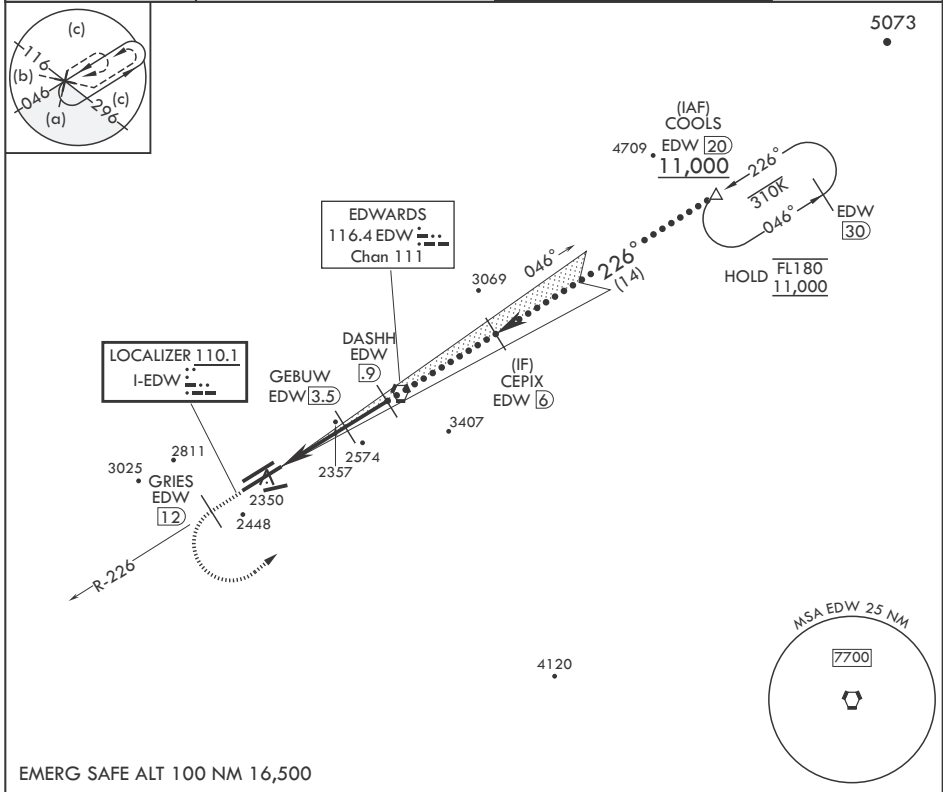
(USAF)

EDWARDS AFB (KEDW)

**⚠** \* Circling not authorized NW of Rwy 5L-23R. Circling not authorized at night to Rwy 5L-23R.

**MISSED APPROACH:** Climb to 11,000. Track EDW VORTAC R-226 outbound to GRIES, then turn left direct COOLS and hold. Missed Approach requires use of RNAV or ATC RADAR monitoring.

ATIS * <b>127.425 269.9</b>	JOSHUA APP CON/DEP CON <b>133.65 348.7</b>	TOWER * <b>120.7</b> (CTAF) <b>318.1</b> (CTAF)	GND CON <b>121.8 225.4</b>
--------------------------------	---	--	-------------------------------



SW-3, 26 DEC 2024 to 23 JAN 2025

SW-3, 26 DEC 2024 to 23 JAN 2025

EMERG SAFE ALT 100 NM 16,500

↑ 11,000 EDW R-226	GRIES EDW 12	COOLS EDW 20	COOLS EDW 20	ELEV 2311	TDZE 2286
--------------------	--------------	--------------	--------------	-----------	-----------

CATEGORY	C	D	E
S-ILS 23L	2486-3/4	200	(200-3/4)
S-LOC 23L	2540-3/4	254	(300-3/4)

<b>C</b> CIRCLING*	2880-1 1/2 569 (600-1 1/2)	2880-2	569	(600-2)
--------------------	-------------------------------	--------	-----	---------

HIRL Rwy 5R-23L  
REIL Rwy 23L

EDWARDS, CALIFORNIA

34°54'N - 117°53'W

EDWARDS AFB (KEDW)

Amdt 1 30JAN20

# HI-ILS or LOC/DME Z RWY 23L