

EDWARDS, CALIFORNIA

# HI-TACAN Z RWY 23L

VORTAC EDW 116.4 Chan 111	APCH CRS 226°	Rwy ldg TDZE 15,024 2286 Arprt Elev 2311
---------------------------------	------------------	--

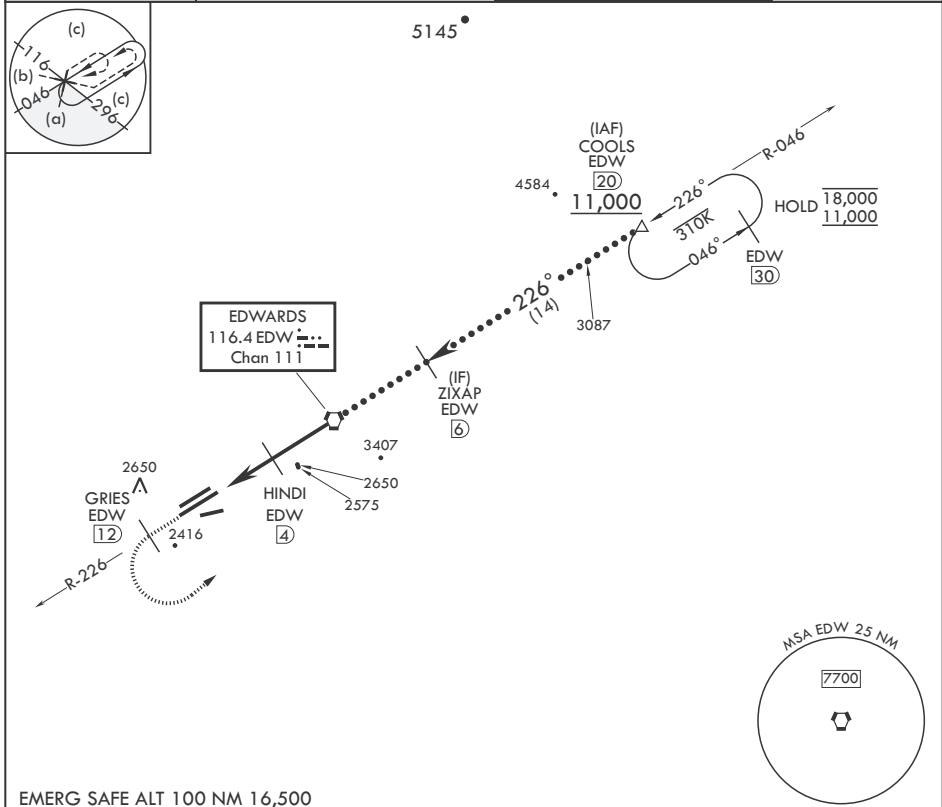
- (USAF)

EDWARDS AFB (KEDW)

⚠ \* Circling NA NW of Rwy 5L-23R. Circling not authorized at night to Rwy 5L-23R.

MISSED APPROACH: Climb to 11,000. Track EDW VORTAC R-226 outbound to GRIES, then turn left direct COOLS and hold. Missed Approach requires use of RNAV or ATC RADAR monitoring.

ATIS ★ 127.425 269.9	JOSHUA APP CON/DEP CON 133.65 348.7	TOWER ★ 120.7 (CTAF) 318.1 (CTAF)	GND CON 121.8 225.4
-------------------------	--	--------------------------------------	------------------------



SW-3, 26 DEC 2024 to 23 JAN 2025

SW-3, 26 DEC 2024 to 23 JAN 2025

EMERG SAFE ALT 100 NM 16,500

11,000 EDW R-226	GRIES EDW (12)	COOLS EDW (20)	VGSI and descent angles not coincident (VGSI Angle 3.00/TCH 49).	COOLS (20)	ELEV 2311	TDZE 2286
CATEGORY	C	D	E			
S-23L	2640-1	354	(400-1)			
ⓐ CIRCLING*	2880-1½ 569 (600-1½)	2880-2	569 (600-2)			

EDWARDS, CALIFORNIA

34°54'N - 117°53'W

EDWARDS AFB (KEDW)

Amdt 1 30JAN20

# HI-TACAN Z RWY 23L