

EDWARDS, CALIFORNIA

RNAV (GPS) RWY 5R

APCH CRS 046°	Rwy Idg TDZE Arprt Elev	15,024 2303 2311
-------------------------	-------------------------------	---

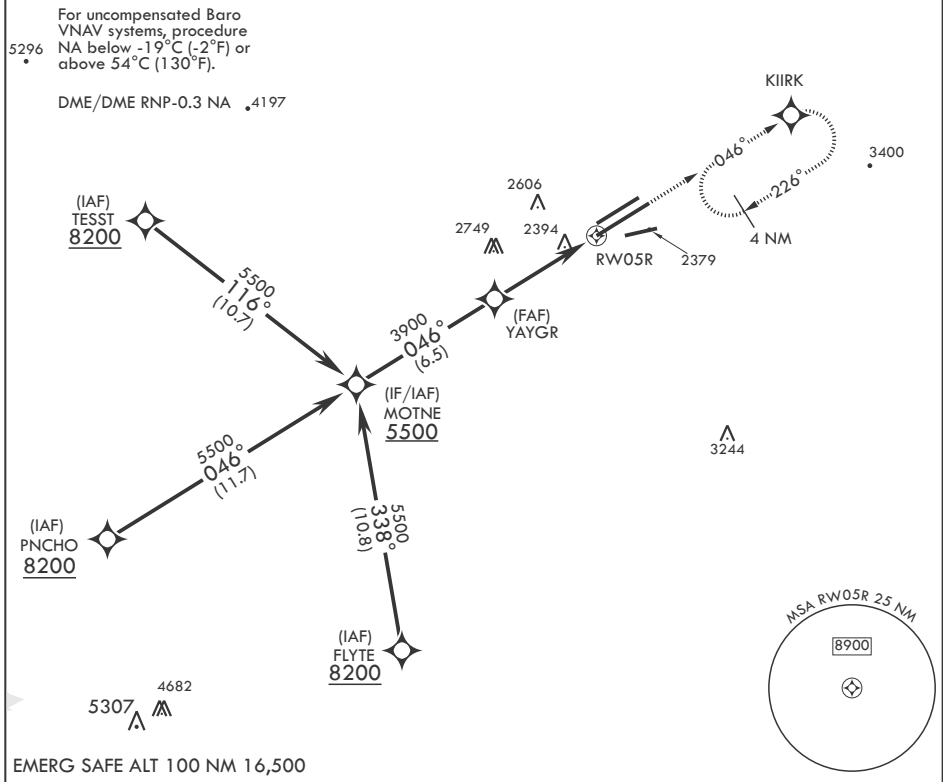
(USAF)

EDWARDS AFB (KEDW)

⚠ * Circling not authorized NW of Rwy 5L-23R.

MISSED APPROACH: Climb to 5700 direct KIIRK and hold, continue climb-in-hold to 5700.

ATIS* 127.425 269.9	JOSHUA APP CON/DEP CON 133.65 348.7	TOWER* 120.7 (CTAF) 318.1 (CTAF)	GND CON 121.8 225.4
-------------------------------	---	--	-------------------------------



EMERG SAFE ALT 100 NM 16,500

MOTNE	VGSi and descent angles not coincident.		5700	KIIRK	ELEV 2311	TDZE 2303
5500	046°		3900	YAYGR	2680	
GP 3.00°	TCH 50		4.8 NM	1.5 NM to RWY 5R	RWY 5R	
CATEGORY	A	B	C	D	E	
LNAV/VNAV DA	2820-1 ³ / ₈		517	(600-1 ³ / ₈)		
LNAV MDA	2820-1	517 (600-1)	2820-1 ³ / ₈	517	(600-1 ³ / ₈)	
C CIRCLING*	2880-1	569 (600-1)	2880-1 ¹ / ₂	569	(600-1 ¹ / ₂)	
HIRL Rwy 5R-23L REIL Rwy 23L						

EDWARDS, CALIFORNIA

34°54'N - 117°53'W

EDWARDS AFB (KEDW)

Amdt 1 30JAN20

RNAV (GPS) RWY 5R

SW-3, 26 DEC 2024 to 23 JAN 2025

SW-3, 26 DEC 2024 to 23 JAN 2025