

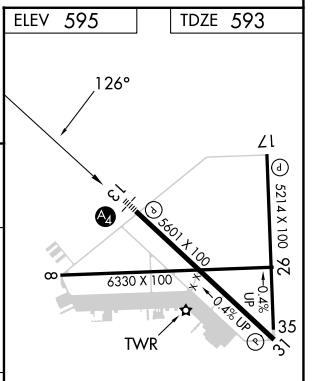
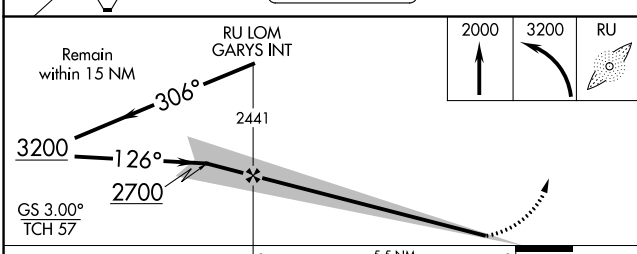
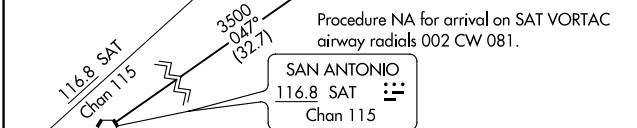
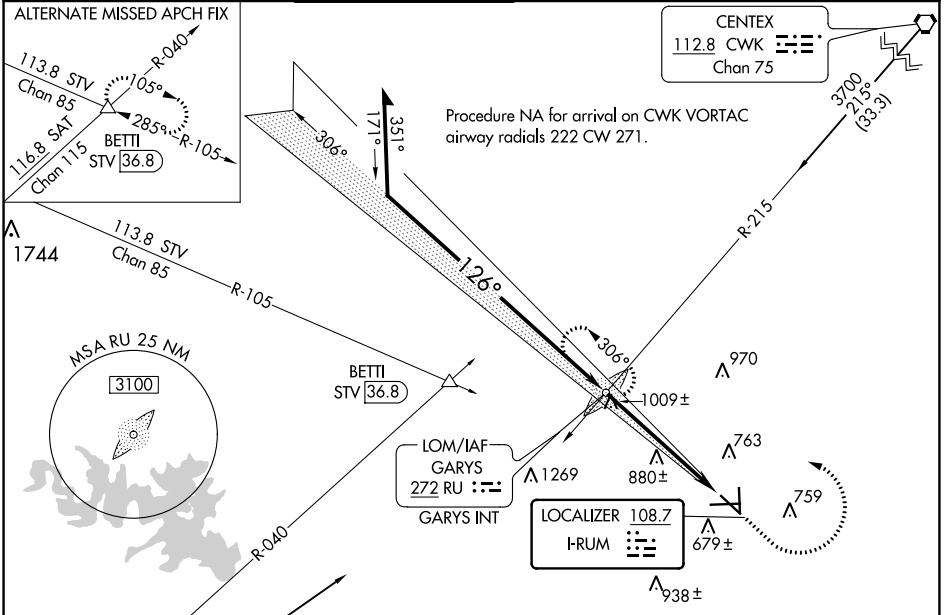
LOC I-RUM <b>108.7</b>	APP CRS <b>126°</b>	Rwy Idg TDZE Apt Elev	<b>5601</b> <b>593</b> <b>595</b>
---------------------------	------------------------	-----------------------------	---

# ILS or LOC RWY 13

SAN MARCOS RGNL (HYI)

ADF required.		MALS	MISSED APPROACH: Climb to 2000 then climbing left turn to 3200 direct GARYS LOM/INT and hold.	
<p>⚠ Circling NA for Cat E southwest of Rwy 13-31. Inop table does not apply to S-ILS 13 all Cats. For inop ALS, increase S-LOC 13 Cat C/D/E visibility to 1/8 SM.</p>				

ATIS ★ <b>120.825</b>	AUSTIN APP CON <b>119.0 370.85</b>	SAN MARCOS TOWER ★ <b>126.825</b> (CTAF) <b>0</b>	GND CON <b>120.125</b>	CLNC DEL <b>120.125</b>	CLNC DEL <b>121.35</b> (when twr closed)
--------------------------	---------------------------------------	--	---------------------------	----------------------------	--



CATEGORY	A	B	C	D	E	MIRL Rwy 8-26, 13-31, and 17-35 <b>0</b> FAF to MAP 5.5 NM
S-ILS-13		793-3/4	200 (200-3/4)			
S-LOC-13	1260-3/4	667 (700-3/4)	1260-13/4	667 (700-13/4)		
CIRCLING	1260-1	665 (700-1)	1260-17/8	1320-21/4	1340-23/4	Knots 60 90 120 150 180
			665 (700-17/8)	725 (800-21/4)	745 (800-23/4)	Min:Sec 5:30 3:40 2:45 2:12 1:50

SC-3, 26 DEC 2024 to 23 JAN 2025

SC-3, 26 DEC 2024 to 23 JAN 2025