

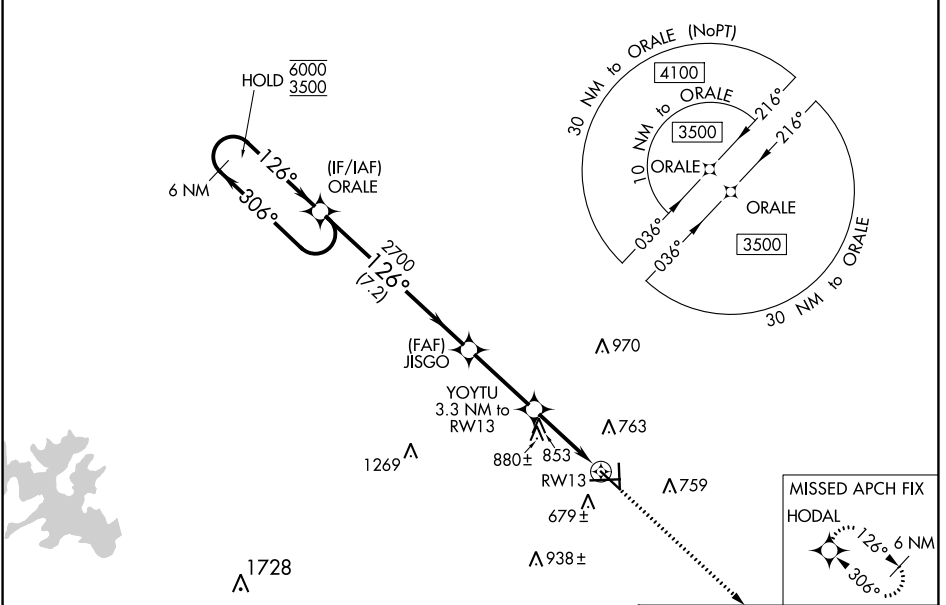
WAAS CH 86232 W13A	APP CRS 126°	Rwy Idg 5601 TDZE 593 Apt Elev 595
--	------------------------	---

RNAV (GPS) RWY 13

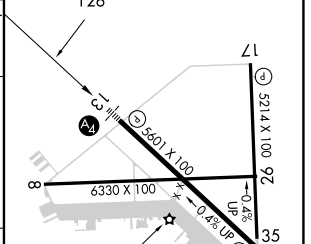
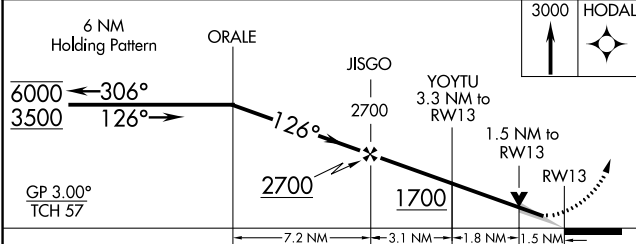
SAN MARCOS RGNL (HYI)

RNP APCH-GPS.	MALS ☐	MISSED APPROACH: Climb to 3000 direct HODAL and hold.
<p>⚠ Circling NA for Cat E southwest of Rwy 13-31. Inop table does not apply to LPV all Cats.</p> <p>⚠ For uncompensated Baro-VNAV systems, LNAV/VNAV NA below -1.6°C or above 54°C.</p> <p>For inop ALS, increase LNAV/VNAV Cat E visibility to 1 SM and LNAV Cat E visibility to 1½ SM.</p>		

ATIS ★ 120.825	AUSTIN APP CON 119.0 370.85	SAN MARCOS TOWER★ 126.825 (CTAF) 0	GND CON 120.125	CLNC DEL 120.125	CLNC DEL 121.35 (when twr closed)
--------------------------	---------------------------------------	---	---------------------------	----------------------------	--



ELEV 595	TDZE 593
----------	----------



CATEGORY	A	B	C	D	E
LPV DA		793-¾	200 (200-¾)		
LNAV/VNAV DA		946-¾	353 (400-¾)		
LNAV MDA	1120-¾	527 (600-¾)	1120-1¼	527 (600-1¼)	
CIRCLING	1120-1	525 (600-1)	1240-1¾ 645 (700-1¾)	1320-2¼ 725 (800-2¼)	1340-2¾ 745 (800-2¾)

