

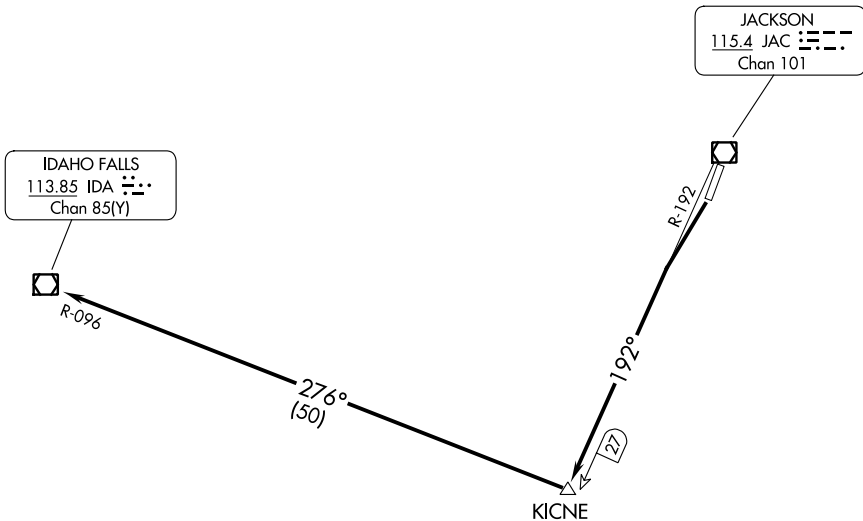
(TETON3.KICNE) 24305

TETON THREE DEPARTURE (OBSTACLE)

AL-504 (FAA)

JACKSON HOLE (JAC)
JACKSON, WYOMING

SALT LAKE CENTER
133.25 285.6
CTAF
118.075



TAKEOFF MINIMUMS

Rwy 19: Standard with a minimum climb of 335' per NM to 14000 or 4400-3 for climb in visual conditions.

Rwy 1: Not authorized - ATC.

TAKEOFF OBSTACLE NOTES

Rwy 19: Bush 485' from DER, 513' right of centerline, 6428' MSL.

NOTE: Chart not to scale.

DEPARTURE ROUTE DESCRIPTION

TAKEOFF RUNWAY 19: Climb to 14000 via JAC R-192 to KICNE INT/JAC 27 DME, then right turn via IDA R-096 to IDA VOR/DME; or for climb in visual conditions: cross JAC VOR/DME southbound at or above 10800, then climb to 14000 via JAC R-192 to KICNE INT/JAC 27 DME, then right turn via IDA R-096 to IDA VOR/DME.

TETON THREE DEPARTURE (OBSTACLE)

(TETON3.KICNE) 05JUN08

JACKSON, WYOMING
JACKSON HOLE (JAC)

NW-1, 26 DEC 2024 to 23 JAN 2025