


VOR/DME JAC 115.4 Chan 101	APP CRS 193°	Rwy Idg TDZE Apt Elev	6300 6451 6451
--	------------------------	-----------------------------	---

VOR RWY 19

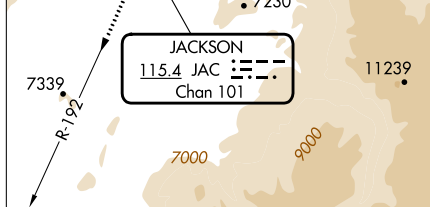
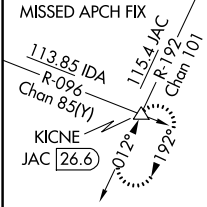
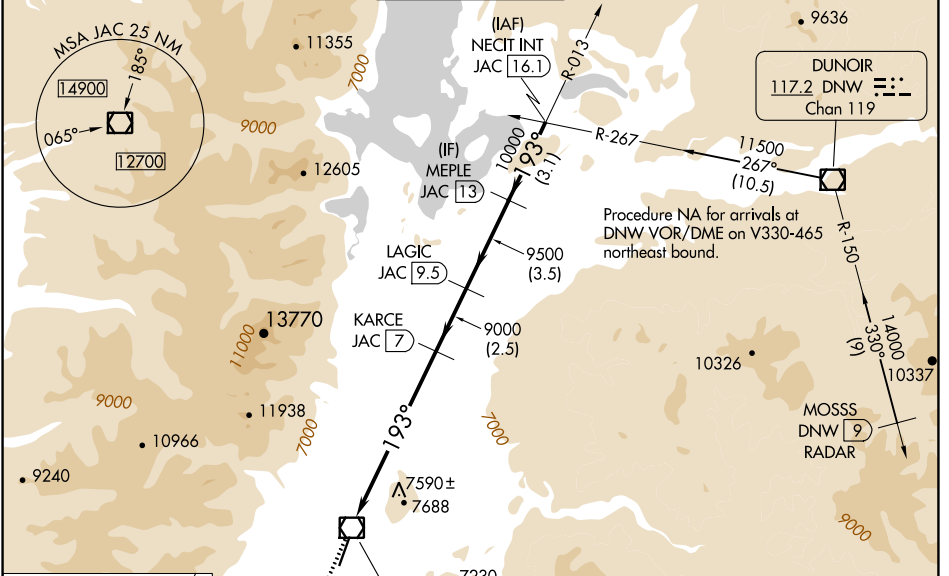
JACKSON HOLE (JAC)

DME required. RADAR required for procedure entry at MOSSS.

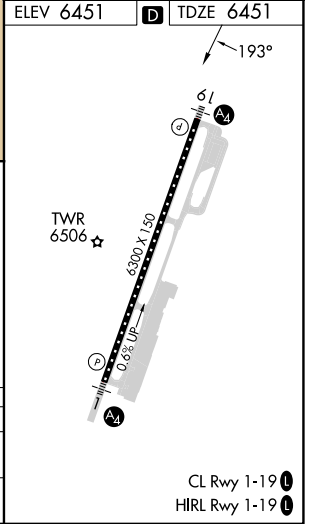
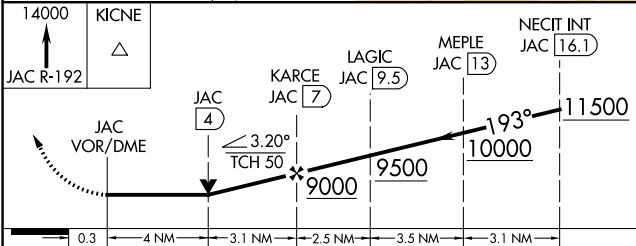
⚠ Circling NA east of Rwy 1-19. Rwy 19 helicopter visibility reduction below RVR 4000 NA. Circling NA for Cat D.
❄ -22°C Inop table does not apply to S-19 Cat C/D.

MALS  MISSED APPROACH: Climb to 14000 on JAC VOR/DME R-192 to KICNE INT/26.6 DME and hold, continue climb-in-hold to 14000.



D-ATIS 120.625	SALT LAKE CENTER 133.25 285.6	JACKSON TOWER* 118.075 (CTAF) 	GND CON 124.55	UNICOM 122.95
--------------------------	---	---	--------------------------	-------------------------



ELEV 6451	D TDZE 6451
-----------	--------------------



CATEGORY	A	B	C	D
S-19	7900/55 1449 (1500-1)	7900-1¼ 1449 (1500-1¼)	7900-3 1449 (1500-3)	
C CIRCLING	7900-1¼ 1449 (1500-1¼)	7900-1½ 1449 (1500-1½)	7900-3 1449 (1500-3)	NA

CL Rwy 1-19 
HIRL Rwy 1-19 

NW-1, 26 DEC 2024 to 23 JAN 2025

NW-1, 26 DEC 2024 to 23 JAN 2025