

WAAS CH 72719 W22A	APP CRS 225°	Rwy Idg TDZE Apt Elev	5500 1117 1148
--	------------------------	-----------------------------	---

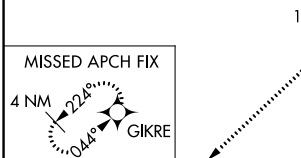
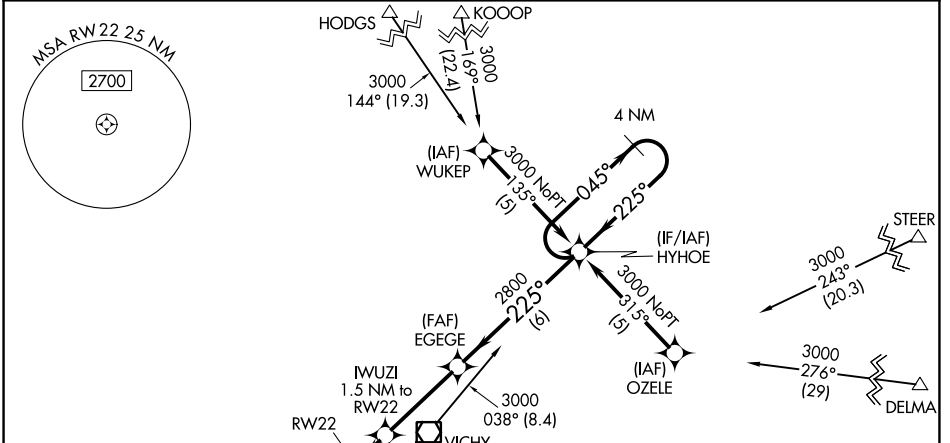
RNAV (GPS) RWY 22

ROLLA NTL (VIH)

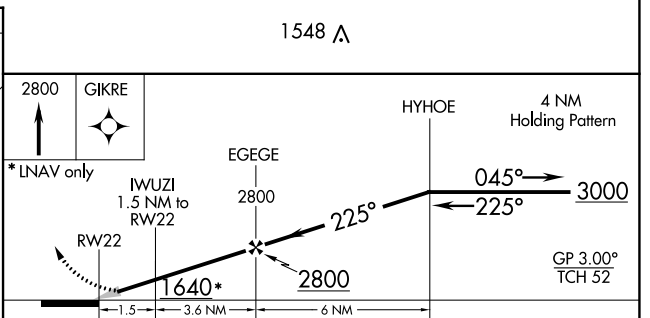
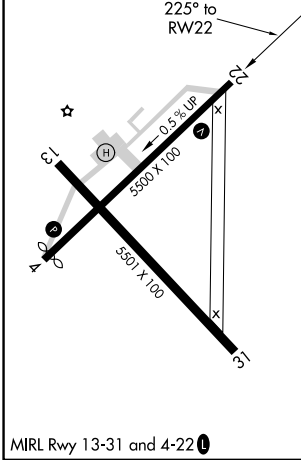
▽ For uncompensated Baro-VNAV systems, LNAV/VNAV NA below -17°C (2°F) or above 46°C (114°F).
△ NA DME/DME RNP-0.3 NA.

MISSED APPROACH:
Climb to 2800 direct GIKRE and hold.

ASOS 119.025	KANSAS CITY CENTER 128.35 284.675	UNICOM 123.0 (CTAF) 0
------------------------	---	---------------------------------



ELEV 1148	TDZE 1117
-----------	-----------



CATEGORY	A	B	C	D
LPV DA	1367-3/4 250 (300-3/4)			
LNAV/VNAV DA	1529-1 1/2 412 (400-1 1/2)			
LNAV MDA	1520-1	403 (400-1)	1520-1 1/4	403 (400-1 1/4)
CIRCLING	1700-1	552 (600-1)	1700-1 1/2	1740-2 592 (600-2)

NC-3, 26 DEC 2024 to 23 JAN 2025

NC-3, 26 DEC 2024 to 23 JAN 2025