

CARGO ONE DEPARTURE (CARGO1 • CARGO)

YUMA MCAS/YUMA INTL (KNYL)

YUMA, ARIZONA

ATIS ★
 118.8 273.5
 CLNC DEL
 118.0 336.4
 GND CON
 121.9 314.0
 YUMA TOWER ★
 119.3 377.075
 YUMA DEP CON
 125.55 282.325

AL-511 [USN]
 Rwy Knots
 31/R V/V(fpm) 225 60
 26 V/V(fpm) 210 450
 35 V/V(fpm) 241 482

Rwy	Knots	60	120	180	240	300	360
31/R	V/V(fpm)	225	450	675	900	1125	1350
26	V/V(fpm)	210	420	630	840	1050	1260
35	V/V(fpm)	241	482	723	964	1205	1446

ATC Climb Rate to 3600

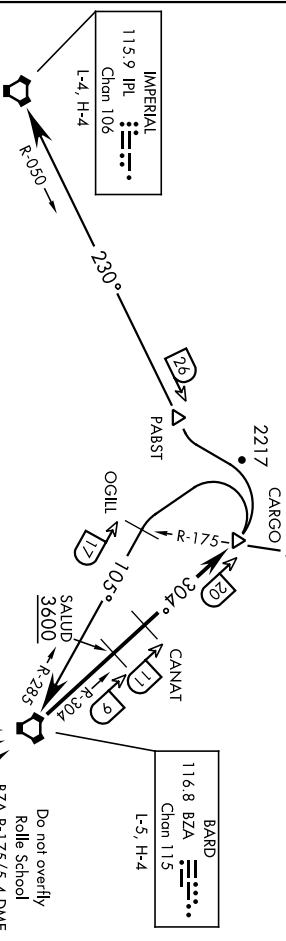
This departure will be filed/assigned for aircraft not carrying external ordnance when RADAR services are not available.

Rwy 8: Do not exceed 270 KIAS until 1000
 Rwy 35: Cross BZA VORTAC or below 14,000
 Max 300 KIAS until SALUD

BUYTHE
 117.4 BKH
 Chon 121
 L-4-5, H-4

IMPERIAL
 115.9 IPL
 Chon 106
 L-4, H-4

BARB
 116.8 BZA
 Chon 115
 L-5, H-4



UNITED STATES
 MEXICO

NOTE: Chart not to scale
 (Continued on next page)

CARGO ONE DEPARTURE (CARGO1 • CARGO)

YUMA, ARIZONA
 YUMA MCAS/YUMA INTL (KNYL)

CARGO ONE DEPARTURE (CARGO1•CARGO)YUMA MCAS/YUMA INTL (KNYL)
YUMA, ARIZONA

A4-511 [USNI]

DEPARTURE ROUTE DESCRIPTION

TAKE-OFF RWY 3L/R: Climbing left turn to intercept BZA VORTAC R-304 to CARGO.
Cross SALUD at or above 3600. Thence...

TAKE-OFF RWY 8: Climb to 1000, then climbing left turn direct BZA VORTAC. Then via BZA R-304 to CARGO. Do not exceed 270 KIAS to 1000. Cross SALUD at or above 3600. Thence...

TAKE-OFF RWY 17: Climb to 1000, then climbing left turn direct BZA VORTAC. Then, via BZA R-304 to CARGO. Cross SALUD at or above 3600. Thence...

TAKE-OFF RWY 21L/R, 26: Climb to 800, then climbing left turn direct BZA VORTAC. Then via BZA R-304 to CARGO. Cross SALUD at or above 3600. Thence...

TAKE-OFF RWY 35: Climb direct BZA VORTAC, then via BZA R-304 to CARGO.
Cross BZA VORTAC at or below 14,000. Do not exceed 300 KIAS in turn at BZA VORTAC. Cross SALUD at or above 3600. Thence...

BARD TRANSITION (CARGO1•BZA): At CARGO, turn left to intercept BZA VORTAC R-285 to BZA.

BLTHE TRANSITION (CARGO1•BLH): At CARGO, turn right to intercept BLH VORTAC R-175 to BLH.

IMPERIAL TRANSITION (CARGO1•IPL): At CARGO, turn left to intercept IPL VORTAC R-050 to IPL.

Then via assigned route. Maintain assigned altitude. Expect clearance to filed altitude 10 minutes after departure.

CARGO ONE DEPARTURE (CARGO1•CARGO)

Amdt 1 17JUN21

YUMA, ARIZONA
YUMA MCAS/YUMA INTL (KNYL)