

YUMA, ARIZONA

RNAV (GPS) RWY 21R

| | | |
|----------|------------|--------|
| APCH CRS | Rwy Idg | 13,300 |
| 213° | TDZE | 193 |
| | Arprt Elev | 213 |

AL-511 (USN)

YUMA MCAS YUMA INTL (KNYL)

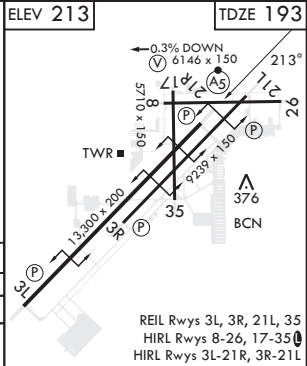
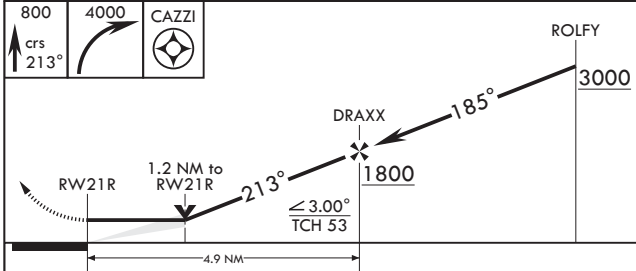
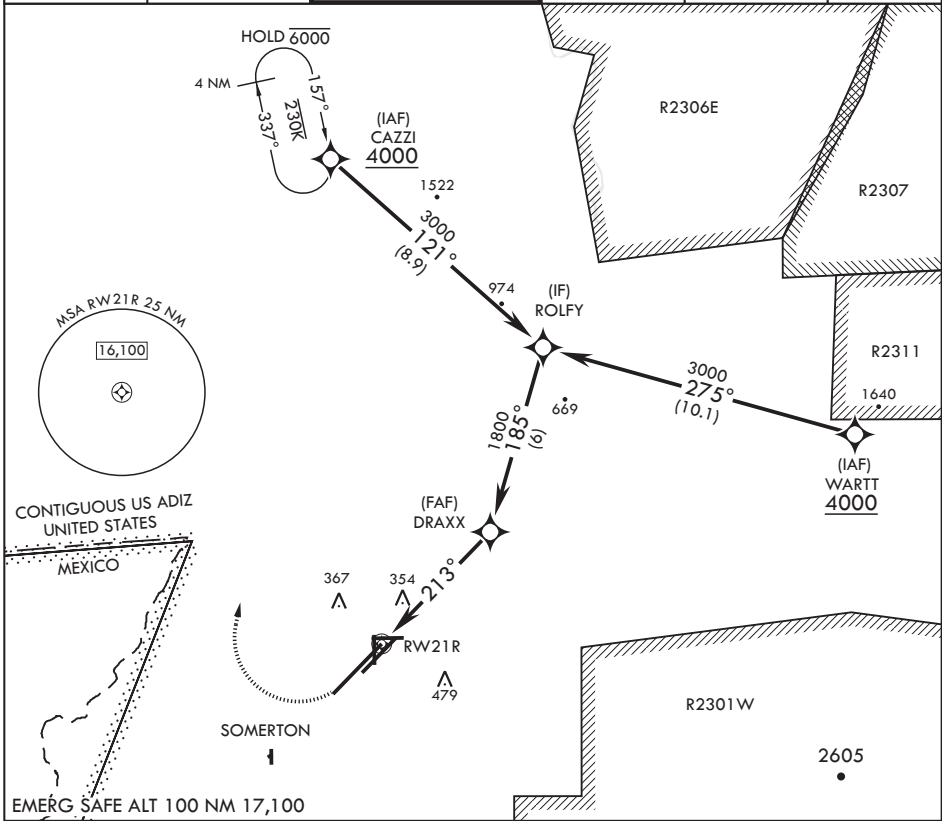
RNP APCH

MALSR

MISSED APPROACH: Climb to 800 then, climbing right turn to 4000 direct CAZZI and hold. Continue climb in hold to 4000.

When ALS inop, increase CAT AB vis to 1 mile, CAT CD vis to 1 1/4 miles.

| | | | | | |
|-------------|---------------|------------------------|-------------|-------------|---------|
| ATIS* | APP CON | TOWER* | GND CON | CLNC DEL | ASR/PAR |
| 118.8 273.5 | 124.7 371.975 | 119.3 (CTAF) 0 377.075 | 121.9 314.0 | 118.0 336.4 | |



| | | | | |
|------------|-----------------------|-----------------------|---------------------------|-------------------|
| CATEGORY | A | B | C | D |
| LNAV MDA* | 620-1/2 427 (500-1/2) | 620-3/4 427 (500-3/4) | 800-1 427 (500-1) | 800-2 427 (500-2) |
| ◻ CIRCLING | 680-1 467 (500-1) | 700-1 487 (500-1) | 800-1 1/2 587 (600-1 1/2) | 800-2 587 (600-2) |

YUMA, ARIZONA

32°39'N - 114°36'W

YUMA MCAS YUMA INTL (KNYL)

Amdt 5 22APR21

RNAV (GPS) RWY 21R

SW-4, 26 DEC 2024 to 23 JAN 2025

SW-4, 26 DEC 2024 to 23 JAN 2025