

YUMA, ARIZONA

RNAV (GPS) RWY 3L

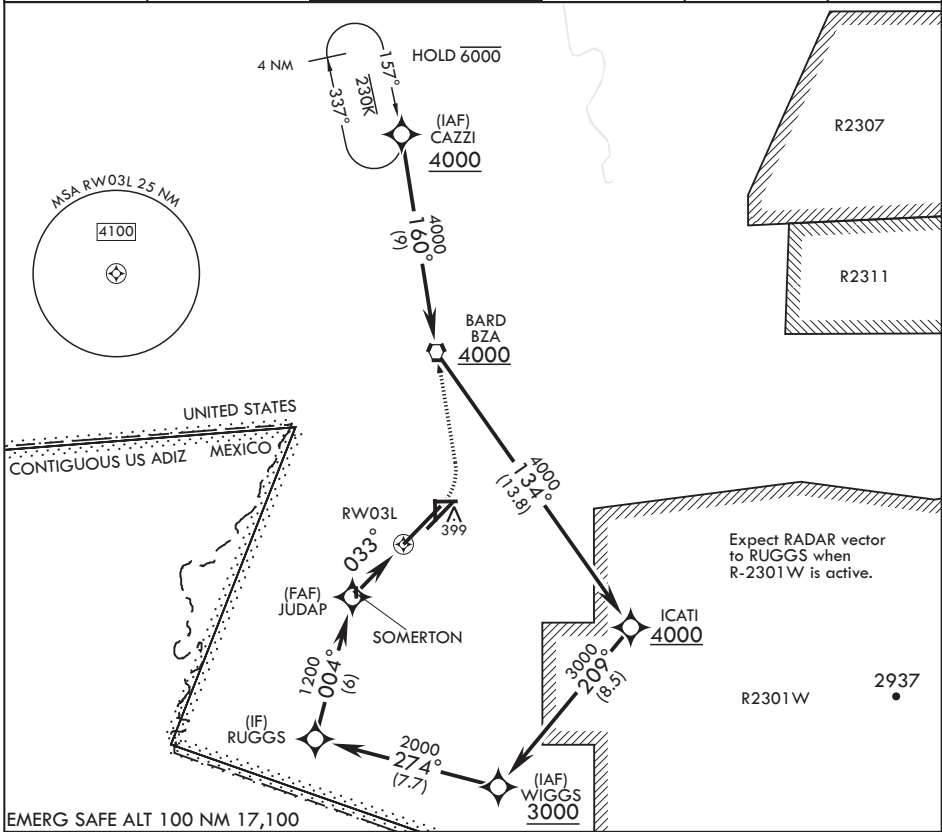
APCH CRS	Rwy Idg	13,300
033°	TDZE	195
	Arprt Elev	213

AL-511 (USN)

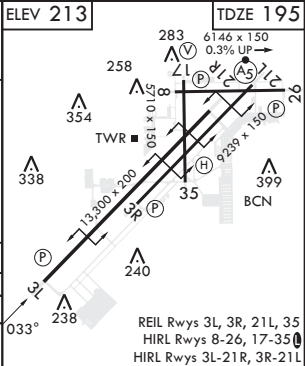
YUMA MCAS YUMA INTL (KNYL)

RNP APCH	MISSED APPROACH: Climb to 1000, then climbing left turn to 4000 direct CAZZI and hold. Continue climb in hold to 4000.
----------	--

ATIS★	APP CON	TOWER★	GND CON	CLNC DEL	ASR/PAR
118.8 273.5	124.7 371.975	119.3 (CTAF) 0 377.075	121.9 314.0	118.0 336.4	



RUGGS	2000	004°	JUDAP	1200	033°	1 NM to RW03L	RW03L	ELEV 213	TDZE 195
CATEGORY		A	B	C	D				
LNAV MDA		560-1	365	(400-1)					
CIRCLING		680-1 467 (500-1)	700-1 487 (500-1)	800-1½ 587 (600-1½)	800-2 587 (600-2)				



SW-4, 26 DEC 2024 to 23 JAN 2025

SW-4, 26 DEC 2024 to 23 JAN 2025

YUMA, ARIZONA

32°39'N - 114°36'W

YUMA MCAS YUMA INTL (KNYL)

Amdt 4 22APR21

RNAV (GPS) RWY 3L