

CLOVIS, NEW MEXICO

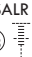
# TACAN RWY 31

TACAN CVS Chan 53	APCH CRS 316°	Rwy ldg TDZE Arprt Elev	8196 4270 4295
----------------------	------------------	----------------------------	----------------------

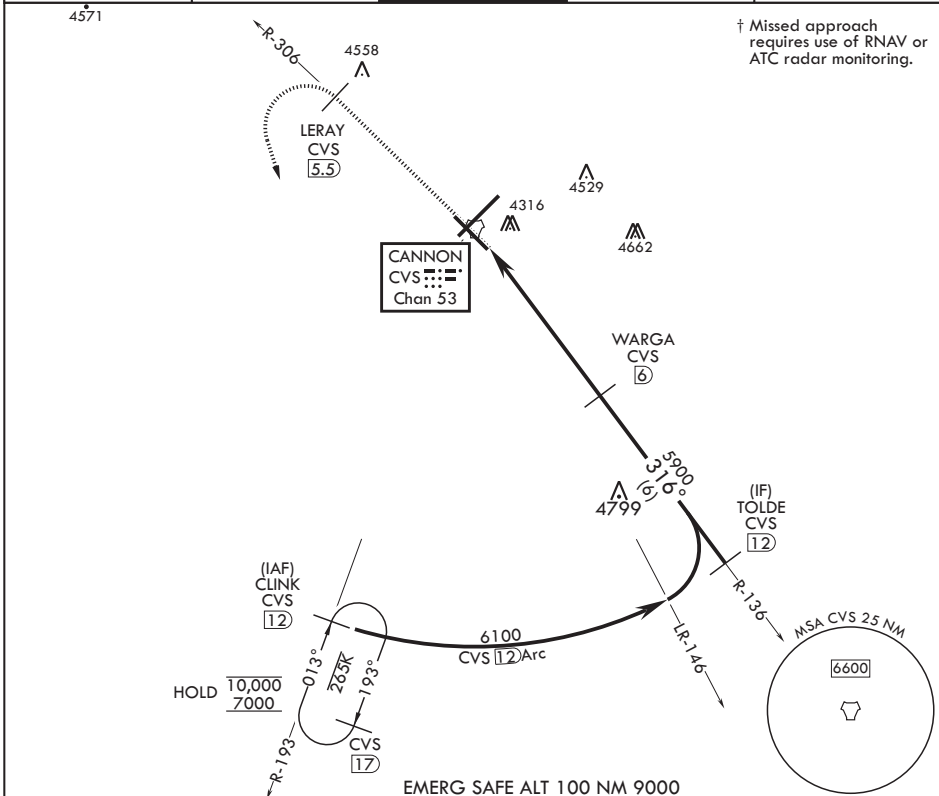
AL-512 (USAF)

CANNON AFB (KCVS)


⚠ \* When ALS inop, increase CAT AB vis to 1 mile, CAT CDE increase vis to 1 3/8 miles.

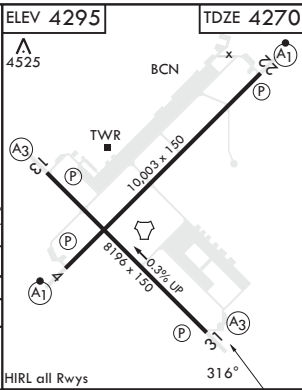
SSALR  † MISSED APPROACH: Climb to 6000 out CVS TACAN R-306 to 5.5 DME (LERAY) then turn left climbing to 7000 intercept CVS TACAN R-193 to 12 DME (CLINK) and hold.

ATIS 119.1 269.9	CANNON APP CON 118.425 352.1	TOWER 120.4 270.25	GND CON 121.9 275.8	CLNC DEL 120.2 293.225
---------------------	---------------------------------	-----------------------	------------------------	---------------------------



† Missed approach requires use of RNAV or ATC radar monitoring.

6000 CVS R-306	LERAY CVS 5.5	7000 CVS R-193	CLINK CVS 12	EMERG SAFE ALT 100 NM 9000		ELEV 4295	TDZE 4270	
TACAN			WARGA 6		TOLDE R-136 12	CLINK R-193 12		
CEGUG 7			5900		6100		6100	
5.3 NM			316°		12 Arc		2.84° TCH 41	
CATEGORY	A	B	C	D	E			
S-31*	4700-1/2	430 (500-1/2)	4700-3/4	430 (500-3/4)				
 CIRCLING	4840-1	545 (600-1)	4860-1 1/2	5000-2 1/4	5020-2 1/2			
			565 (600-1 1/2)	705 (800-2 1/4)	725 (800-2 1/2)			



CLOVIS, NEW MEXICO

34°23'N - 103°19'W

CANNON AFB (KCVS)

Amdt 3 10OCT19

# TACAN RWY 31

SW-1, 26 DEC 2024 to 23 JAN 2025

SW-1, 26 DEC 2024 to 23 JAN 2025