

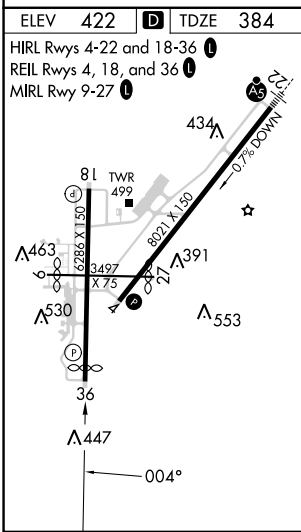
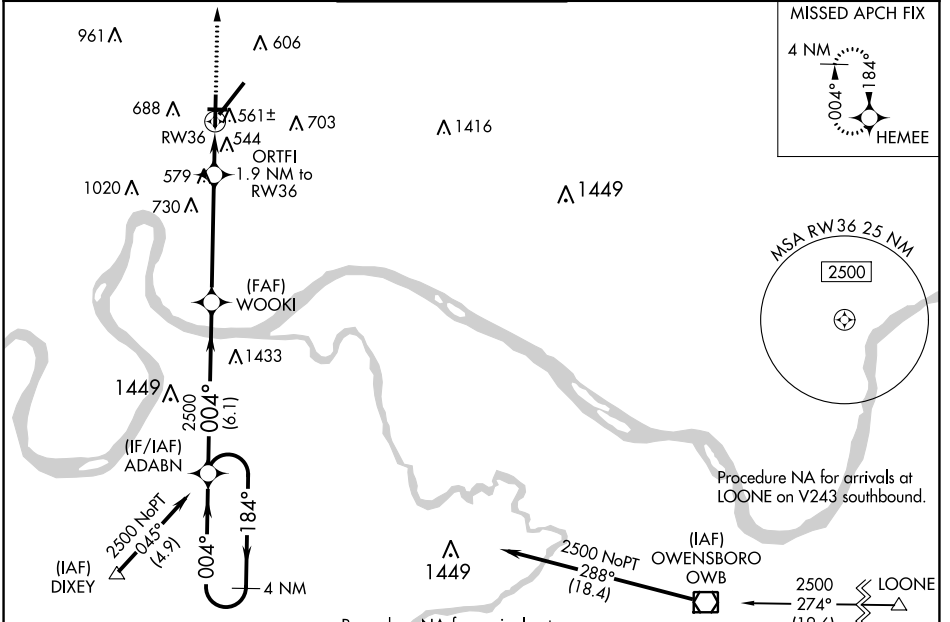
WAAS CH 90421 W36A	APP CRS 004°	Rwy Idg 5497 TDZE 384 Apt Elev 422
--	------------------------	---

RNAV (GPS) RWY 36

EVANSVILLE RGNL (EVV)

ASR	For uncompensated Baro-VNAV systems, LNAV/VNAV NA below -15°C (5°F) or above 54°C (130°F). DME/DME RNP-0.3 NA. Circling Rwy 9 NA at night. Helicopter visibility reduction below 3/4 SM NA.	MISSED APPROACH: Climb to 2500 direct HEMEE and hold.

ATIS 120.2	EVANSVILLE APP CON ★ 124.025 290.9	EVANSVILLE TOWER ★ 118.7 (CTAF) 257.8	GND CON 121.9	CLNC DEL 126.6	UNICOM 122.95
----------------------	--	---	-------------------------	--------------------------	-------------------------



4 NM Holding Pattern

VGSI and RNAV glidepath not coincident (VGSI Angle 3.00/TCH 29).

2500 HEMEE

ADABN WOOKI ORTFI 1.9 NM to RW36

2500 184° 004° 2500

*1.3 NM to RW36

*1040

6.1 NM 4.6 NM 0.6 NM 1.3

CATEGORY	A	B	C	D
LPV DA	634-3/4		250 (300-3/4)	
LNAV/VNAV DA	891-13/4		507 (500-13/4)	
LNAV MDA	820-1	436 (500-1)	820-1 1/4	436 (500-1 1/4)
CIRCLING	920-1 498 (500-1)	1040-1 618 (700-1)	1040-1 3/4 618 (700-1 3/4)	1040-2 618 (700-2)

EC-2, 26 DEC 2024 to 23 JAN 2025

EC-2, 26 DEC 2024 to 23 JAN 2025