

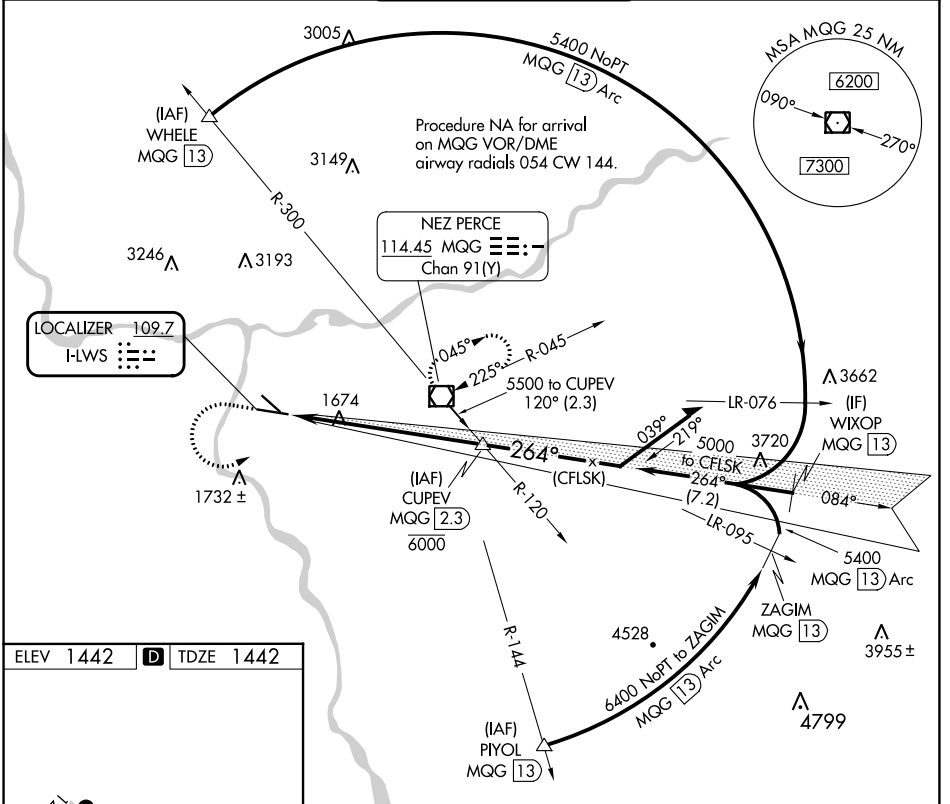
LOC I-LWS 109.7	APP CRS 264°	Rwy Idg TDZE Apt Elev	6511 1442 1442
---------------------------	------------------------	-----------------------------	---

ILS RWY 26

LEWISTON/NEZ PERCE COUNTY (LWS)

▽ ▲	When local altimeter setting not received, procedure NA. Autopilot coupled approach NA below 2500.	MALSR 	MISSED APPROACH: Climb to 3000 then climbing left turn to 5300 direct MQG VOR/DME and hold, continue climb-in-hold to 5300.
----------------------	--	-----------	---

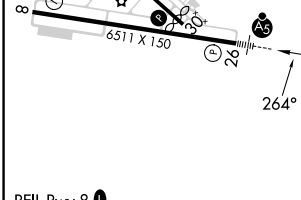
ASOS 135.575	SEATTLE CENTER 123.95 290.55	LEWISTON TOWER ★ 119.4 (CTAF) 0 318.8	GND CON 121.9	UNICOM 122.95
------------------------	--	---	-------------------------	-------------------------



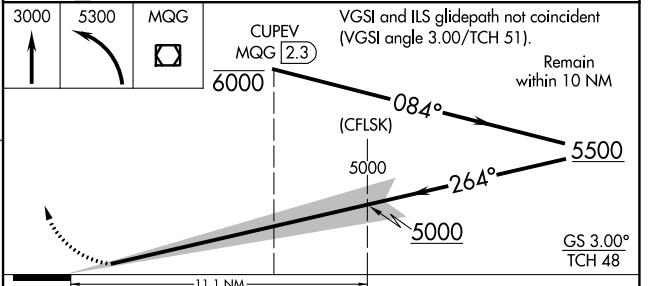
NW-1, 26 DEC 2024 to 23 JAN 2025

NW-1, 26 DEC 2024 to 23 JAN 2025

ELEV 1442	D	TDZE 1442
-----------	----------	-----------



- REIL Rwy 8
- REIL RWY 12
- HIRL Rwy 8-26
- MIRL Rwy 12-30



CATEGORY	A	B	C	D
S-ILS 26	1642-½ 200 (200-½)			

ILS RWY 26