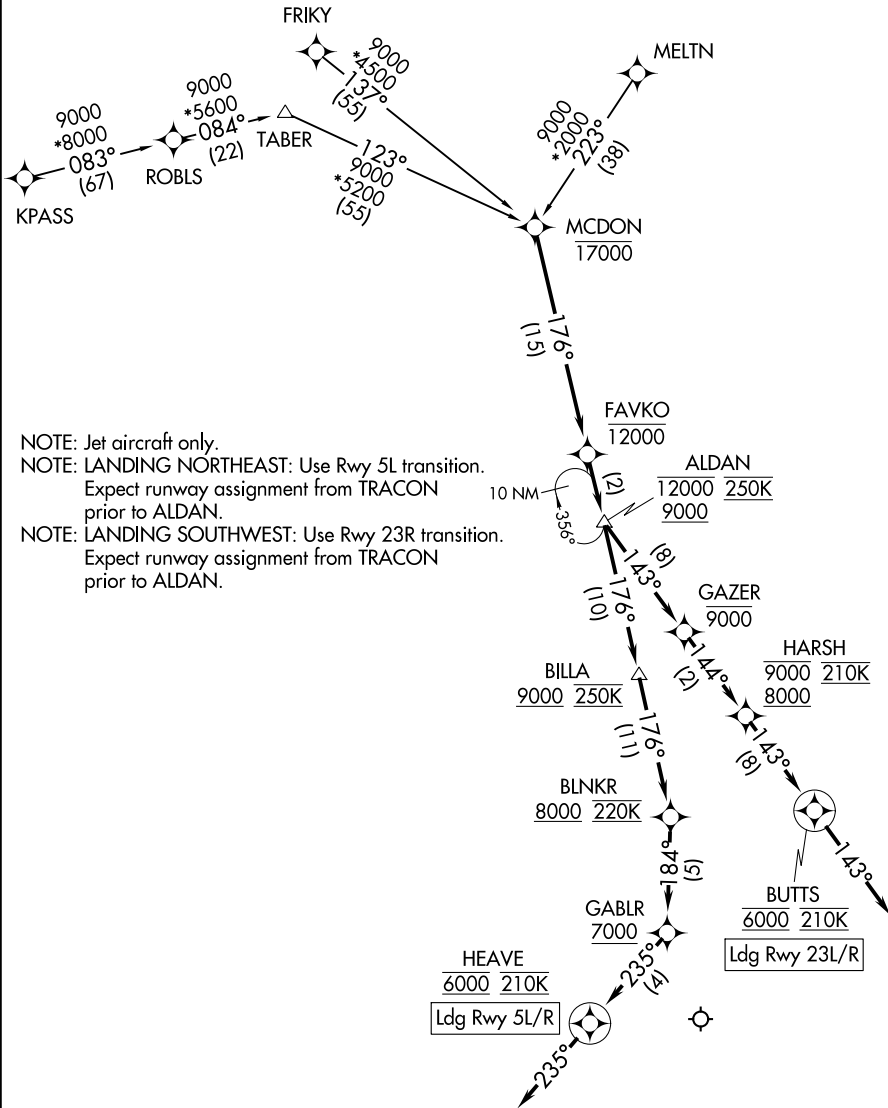


# ALDAN FOUR ARRIVAL (RNAV)

RALEIGH APP CON  
127.675 307.9  
D-ATIS  
123.8

RNAV 1 - DME/DME IRU or GPS.  
RADAR required.



NOTE: Jet aircraft only.  
 NOTE: LANDING NORTHEAST: Use Rwy 5L transition.  
 Expect runway assignment from TRACON prior to ALDAN.  
 NOTE: LANDING SOUTHWEST: Use Rwy 23R transition.  
 Expect runway assignment from TRACON prior to ALDAN.

SE-2, 26 DEC 2024 to 23 JAN 2025

SE-2, 26 DEC 2024 to 23 JAN 2025

(CONTINUED ON FOLLOWING PAGE)

NOTE: Chart not to scale.

# ALDAN FOUR ARRIVAL (RNAV)

(MCDON.ALDAN4) 25JAN24

# ALDAN FOUR ARRIVAL (RNAV)

## ARRIVAL ROUTE DESCRIPTION

FRIKY TRANSITION (FRIKY.ALDAN4)  
KPASS TRANSITION (KPASS.ALDAN4)  
MELTN TRANSITION (MELTN.ALDAN4)

From MCDON on track 176° to cross FAVKO at or below 12000, then on track 176° to cross ALDAN between 9000 and 12000 and at 250K.

LANDING RUNWAYS 5L/R: From ALDAN on track 176° to cross BILLA at or above 9000, then on track 176° to cross BLNKR at or above 8000 and at 220K, then on track 184° to cross GABLR at or above 7000, then on track 235° to cross HEAVE at 6000 and at 210K, then on track 235°. Expect RNP Rwy 5L approach. Non-RNP aircraft: Expect RADAR vectors to final approach course.

LANDING RUNWAYS 23L/R: From ALDAN on track 143° to cross GAZER at or below 9000, then on track 144° to cross HARSH between 8000 and 9000 and at 210K, then on track 143° to cross BUTTS at 6000 and at 210K, then on track 143°. Expect ILS or RNAV Rwy 23L or Rwy 23R approach.

SE-2, 26 DEC 2024 to 23 JAN 2025

SE-2, 26 DEC 2024 to 23 JAN 2025