

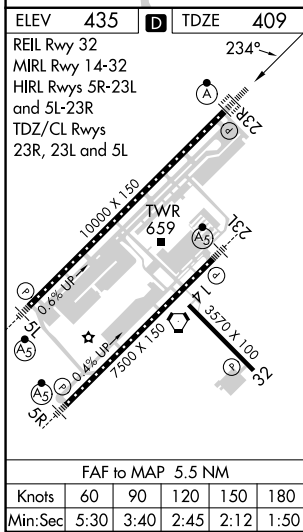
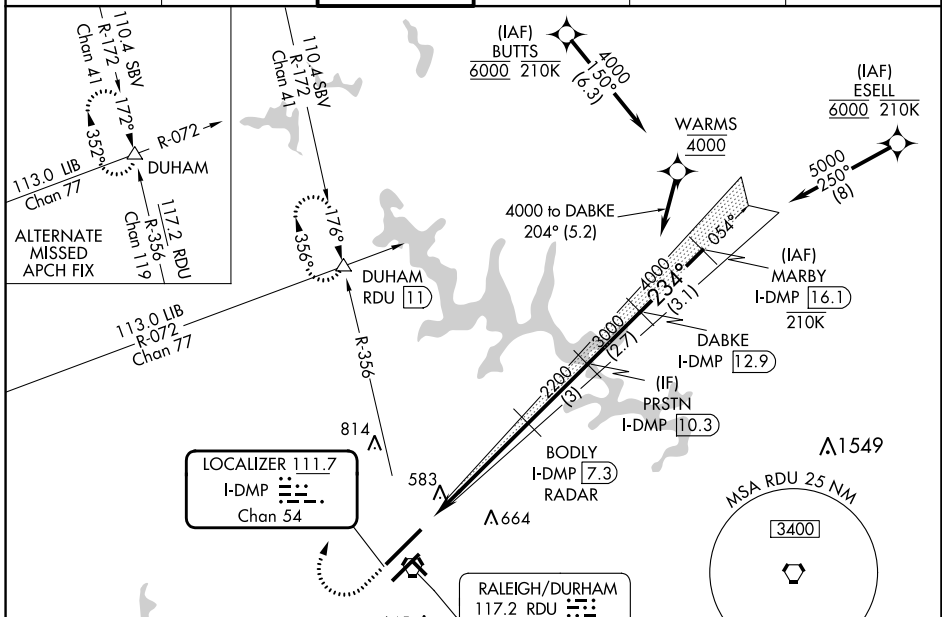
LOC/DME I-DMP 111.7 Chan 54	APP CRS 234°	Rwy Idg TDZE Apt Elev 10000 409 435
-------------------------------------------------	------------------------	-------------------------------------------------------------------------

ILS or LOC RWY 23R

RALEIGH-DURHAM INTL (RDU)

RNAV 1-DME/DME/IRU or GPS or RADAR required for procedure entry. RADAR or DME required for LOC only.	ALSF-2 	MISSED APPROACH: Climb to 1000 then climbing right turn to 2200 on RDU VORTAC R-356 to DUHAM INT/RDU 11 DME and hold.
Simultaneous approach authorized. For inop ALS increase S-LOC 23R Cat C/D visibility to 1 1/2 SM.		

D-ATIS 123.8	RALEIGH APP CON 127.675 307.9	RALEIGH TOWER 127.45 257.8	GND CON 121.9 348.6	CLNC DEL 120.1	CPDLC
------------------------	-----------------------------------------	--------------------------------------	-------------------------------	--------------------------	-------



1000	2200	RDU R-356	DUHAM	VGSI and ILS glidepath not coincident (VGSI Angle 3.00/TCH 69).	MARBY I-DMP (16.1)
*LOC only.					
I-DMP (1.8)	*I-DMP (3.4)	2200	BODY I-DMP (7.3) RADAR	PRSTN I-DMP (10.3)	DABKE I-DMP (12.9)
1.6 NM		3.9 NM	3 NM	2.7 NM	3.1 NM
5000	4000	3000	2200	GS 3.00° TCH 55	
CATEGORY A		CATEGORY B		CATEGORY C	
S-ILS 23R		609/18 200 (200-1/2)			
S-LOC 23R		980/24 571 (600-1/2)		980-1 1/4 571 (600-1 1/4)	
<input checked="" type="checkbox"/> CIRCLING		980-1 545 (600-1)		1020-1 1/2 585 (600-1 1/2) 1180-2 1/2 745 (800-2 1/2)	

SE-2, 26 DEC 2024 to 23 JAN 2025

SE-2, 26 DEC 2024 to 23 JAN 2025