

LOC/DME I-GKK 109.1 Chan 28	APP CRS 054°	Rwy Idg TDZE Apt Elev 10000 384 435
--	------------------------	---

ILS or LOC RWY 5L

RALEIGH-DURHAM INTL (RDU)

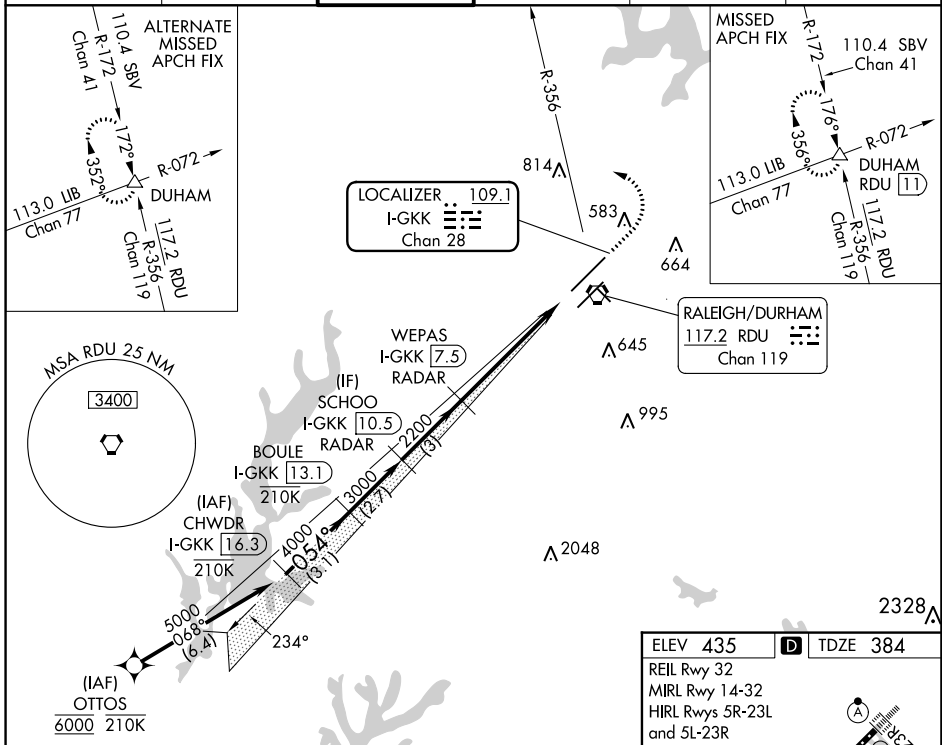
RNAV 1-DME/DME/IRU or GPS or RADAR required for procedure entry. DME or RADAR required for LOC only.

Simultaneous approach authorized.

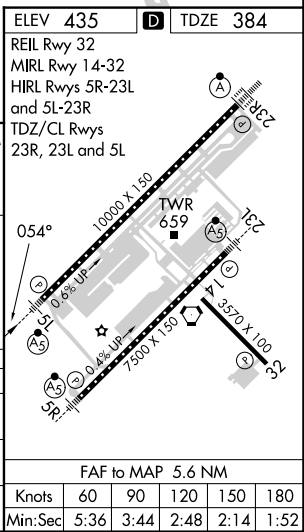
MALSR

MISSED APPROACH: Climb to 1000 then climbing left turn to 2200 on heading 310° and RDU VORTAC R-356 to DUHAM INT/ RDU 11 DME and hold.

D-ATIS 123.8	RALEIGH APP CON 127.675 307.9	RALEIGH TOWER 127.45 257.8	GND CON 121.9 348.6	CLNC DEL 120.1	CPDLC
------------------------	---	--------------------------------------	-------------------------------	--------------------------	-------



CHWDR I-GKK 16.3	BOULE I-GKK 13.1	SCHOO I-GKK 10.5	WEPAS I-GKK 7.5	1000	2200	RDU R-356	DUHAM
5000-054°				↑ hdg 310°		△	
GS 3.00° TCH 57				*I-GKK 3.1		*LOC only.	
VGSi and ILS glidepath not coincident (VGSi Angle 3.00/TCH 72).				I-GKK 1.9			
-3.1 NM -2.7 NM -3 NM -4.3 NM -1.3 NM							
CATEGORY	A	B	C	D			
S-ILS 5L	598/18 214 (200-½)						
S-LOC 5L	840/24	456 (500-½)	840/45	456 (500-¾)			
CIRCLING	960-1	525 (600-1)	1020-1½	1180-2½			
	585 (600-1½)			745 (800-2½)			



SE-2, 26 DEC 2024 to 23 JAN 2025

SE-2, 26 DEC 2024 to 23 JAN 2025