


LOC/DME I-RDU	APP CRS	Rwy Idg	7500
109.5	054°	TDZE	420
Chan 32		Apt Elev	435

ILS or LOC RWY 5R

RALEIGH-DURHAM INTL (RDU)

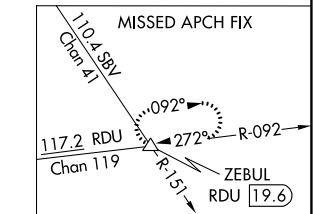
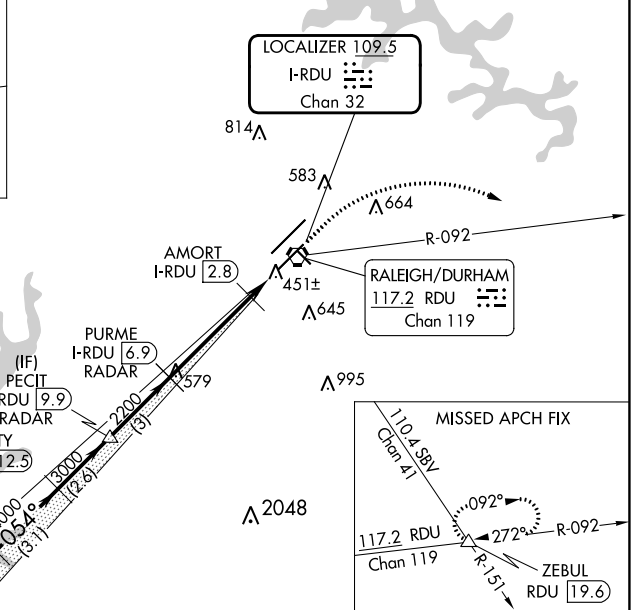
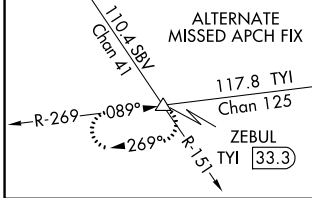
RNAV 1-DME/DME/IRU or GPS or RADAR required for procedure entry. DME or RADAR required for LOC only.

⚠ Simultaneous approach authorized.
⚠ # RVR 1800 authorized with use of FD or AP or HUD to DA.

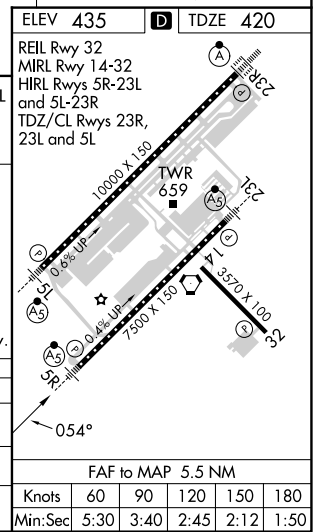
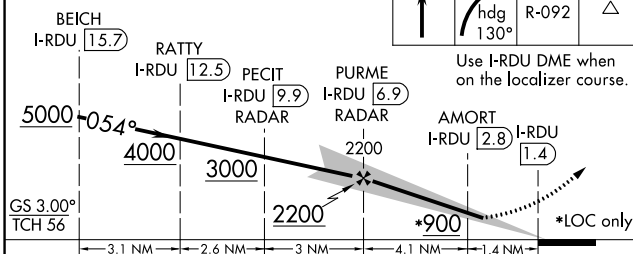
MALS 

MISSED APPROACH: Climb to 1000 then climbing right turn to 2600 on heading 130° and on RDU VORTAC R-092 to ZEBUL INT/ RDU 19.6 DME and hold.

D-ATIS 123.8	RALEIGH APP CON 127.675 307.9	RALEIGH TOWER 127.45 257.8	GND CON 121.9 348.6	CLNC DEL 120.1	CPDLC
------------------------	---	--------------------------------------	-------------------------------	--------------------------	-------



VGSI and ILS glidepath not coincident (VGSI Angle 3.00/TCH 62).



CATEGORY	A	B	C	D
S-ILS 5R #	620/24		200 (200-½)	
S-LOC 5R	760/24	340 (400-½)	760/26	340 (400-½)
C CIRCLING	960-1	525 (600-1)	1020-1½	1180-2½
			585 (600-1½)	745 (800-2½)

FAF to MAP 5.5 NM					
Knots	60	90	120	150	180
Min:Sec	5:30	3:40	2:45	2:12	1:50

SE-2, 26 DEC 2024 to 23 JAN 2025

SE-2, 26 DEC 2024 to 23 JAN 2025