

# PACKK NINE DEPARTURE

D-ATIS  
123.8  
CLNC DEL  
120.1  
CPDLC  
RALEIGH DEP CON  
125.3 353.675 (055°-229°)  
132.35 256.9 (230°-054°)

**TOP ALTITUDE:  
6000**

FLAT ROCK  
113.3 FAK  
Chan 80

GREENSBORO  
116.2 GSO  
Chan 109

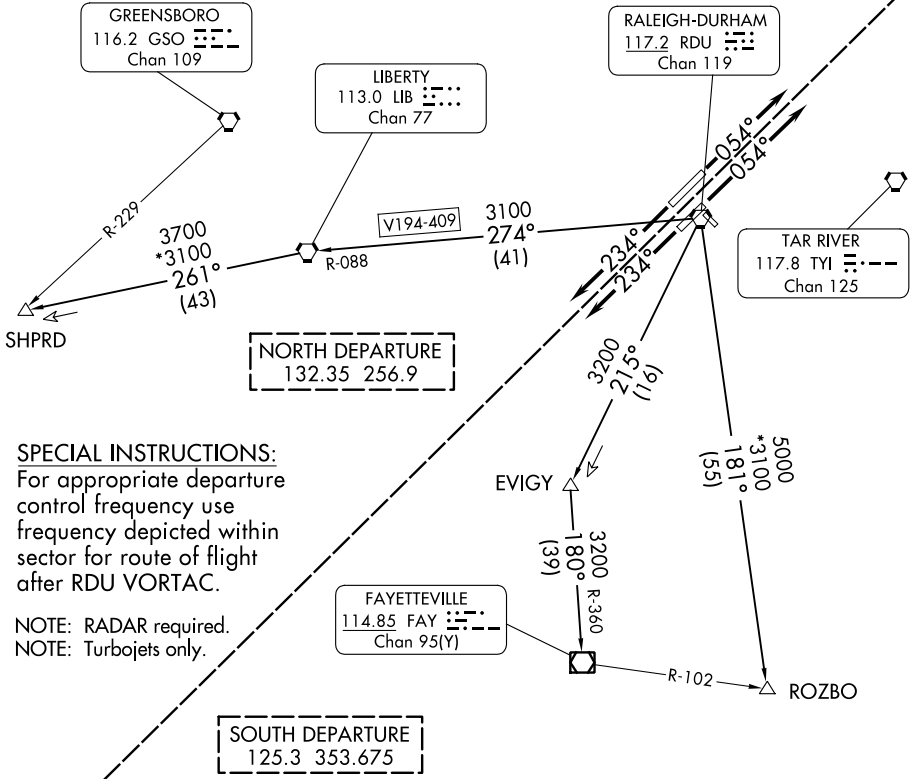
LIBERTY  
113.0 LIB  
Chan 77

RALEIGH-DURHAM  
117.2 RDU  
Chan 119

TAR RIVER  
117.8 TYI  
Chan 125

SE-2, 26 DEC 2024 to 23 JAN 2025

SE-2, 26 DEC 2024 to 23 JAN 2025



**SPECIAL INSTRUCTIONS:**  
For appropriate departure control frequency use frequency depicted within sector for route of flight after RDU VORTAC.

NOTE: RADAR required.  
NOTE: Turbojets only.

**TAKEOFF MINIMUMS**

- Rwy 14, 32: NA-ATC.
- Rwys 5L/R: Standard.
- Rwy 23L: Standard with minimum climb of 250' per NM to 2300.
- Rwy 23R: Standard with minimum climb of 240' per NM to 2100.

NOTE: Chart not to scale.

(CONTINUED ON FOLLOWING PAGE)

# PACKK NINE DEPARTURE

# PACKK NINE DEPARTURE



## DEPARTURE ROUTE DESCRIPTION

TAKEOFF RUNWAYS 5L/R: Climb on heading 054°, or as assigned by ATC, thence. . . .

TAKEOFF RUNWAYS 23L/R: Climb on heading 234°, or as assigned by ATC, thence. . . .

. . . .for RADAR vectors to assigned/filed transition/fix/navaid/airway, maintain 6000, expect filed altitude ten minutes after departure.

FAYETTEVILLE TRANSITION (PACK9.FAY): From over RDU VORTAC on RDU R-215 to EVIGY, then on FAY R-360 to FAY VOR/DME.

ROZBO TRANSITION (PACK9.ROZBO): From over RDU VORTAC on RDU R-181 to ROZBO.

SHPRD TRANSITION (PACK9.SHPRD): From over RDU VORTAC on RDU R-274 and LIB R-088 to LIB VORTAC, then on LIB R-261 to SHPRD.

SE-2, 26 DEC 2024 to 23 JAN 2025

SE-2, 26 DEC 2024 to 23 JAN 2025