

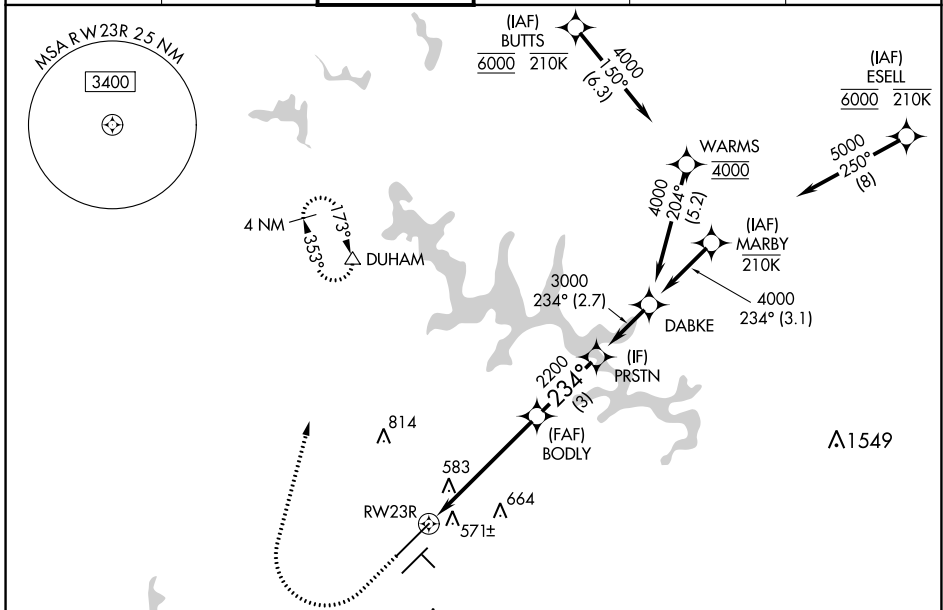
WAAS CH <b>45613</b> <b>W23A</b>	APP CRS <b>234°</b>	Rwy Idg <b>10000</b> TDZE <b>409</b> Apt Elev <b>435</b>
--	------------------------	--

# RNAV (GPS) Y RWY 23R

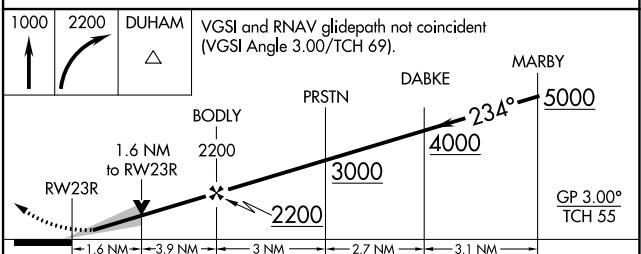
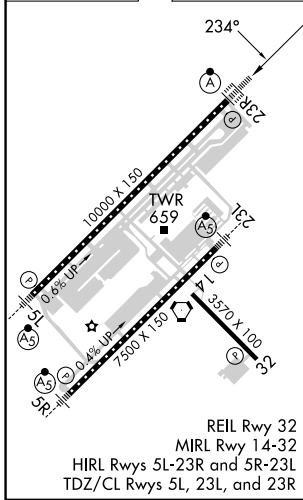
RALEIGH-DURHAM INTL (RDU)

RNP APCH - GPS		ALSF-2	MISSED APPROACH: Climb to 1000 then climbing right turn to 2200 direct DUHAM and hold.
<p>Simultaneous approach authorized. LNAV procedure NA during simultaneous operations. Use of FD or AP providing RNAV track guidance required during simultaneous operations.</p> <p>For uncompensated Baro-VNAV systems, LNAV/VNAV NA below -12°C or above 54°C. For inop ALS, increase LNAV/VNAV all Cats visibility to RVR 6000 and LNAV Cat C/D visibility to 1½ NM.</p>			

D-ATIS <b>123.8</b>	RALEIGH APP CON <b>127.675 307.9</b>	<b>RALEIGH TOWER</b> <b>127.45 257.8</b>	GND CON <b>121.9 348.6</b>	CLNC DEL <b>120.1</b>	CPDLC
------------------------	---	---	-------------------------------	--------------------------	-------



ELEV <b>435</b>	<b>D</b>	TDZE <b>409</b>
-----------------	----------	-----------------



	A	B	C	D
LPV DA	609/18	200 (200-½)		
LNAV/VNAV DA	826/40	417 (400-¾)		
LNAV MDA	980/24	571 (600-½)	980-1¼	571 (600-1¼)
<b>CIRCLING</b>	980-1	545 (600-1)	1020-1½ 585 (600-1½)	1180-2½ 745 (800-2½)

SE-2, 26 DEC 2024 to 23 JAN 2025

SE-2, 26 DEC 2024 to 23 JAN 2025