

(TAQLE.TAQLE2) 23278

AL-516 (FAA)

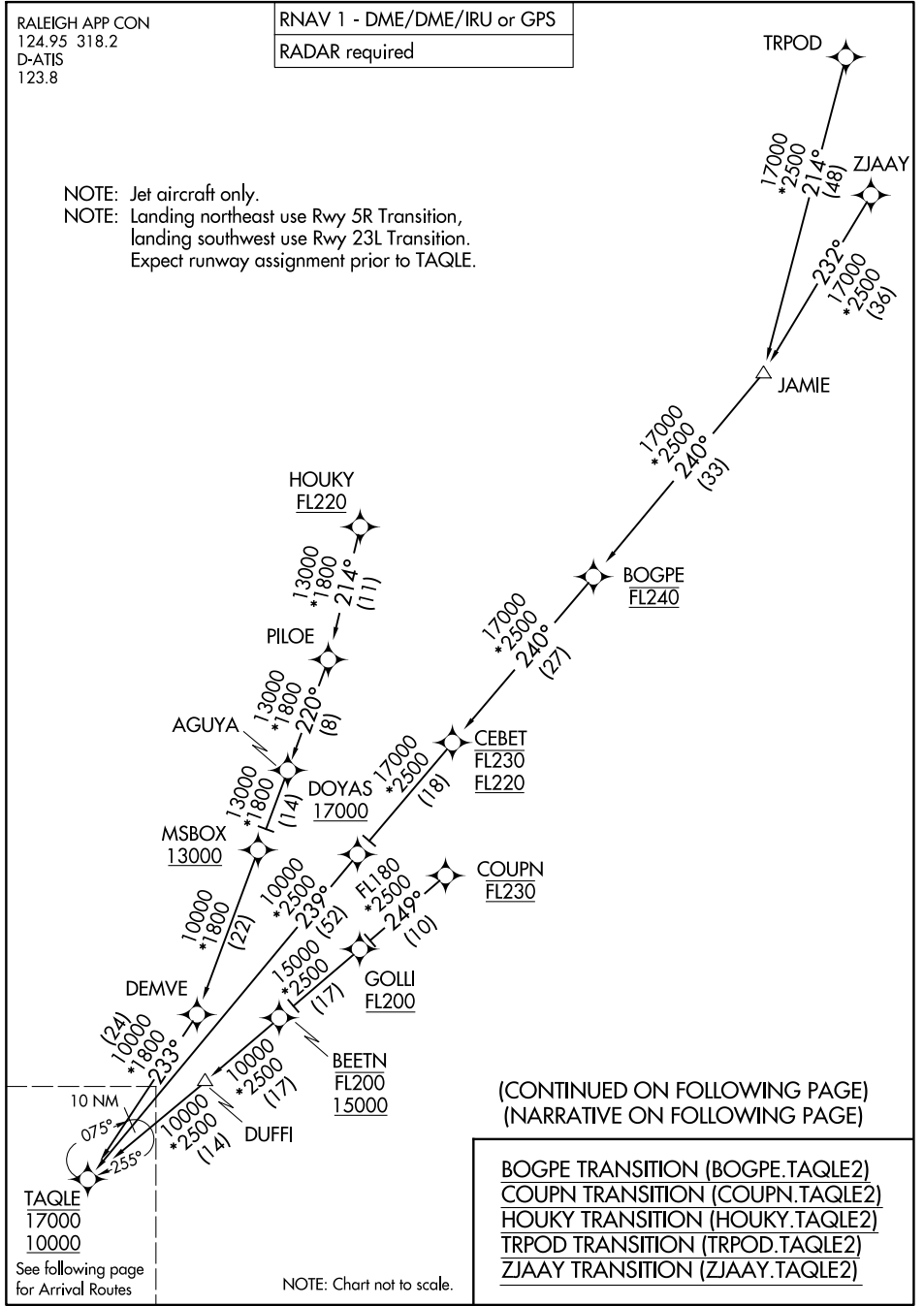
RALEIGH-DURHAM INTL (RDU)  
RALEIGH/DURHAM, NORTH CAROLINA

# TAQLE TWO ARRIVAL (RNAV) Transition Routes

RALEIGH APP CON  
124.95 318.2  
D-ATIS  
123.8

RNAV 1 - DME/DME/IRU or GPS
RADAR required

NOTE: Jet aircraft only.  
 NOTE: Landing northeast use Rwy 5R Transition,  
 landing southwest use Rwy 23L Transition.  
 Expect runway assignment prior to TAQLE.



(CONTINUED ON FOLLOWING PAGE)  
 (NARRATIVE ON FOLLOWING PAGE)

- BOGPE TRANSITION (BOGPE.TAQLE2)
- COUPN TRANSITION (COUPN.TAQLE2)
- HOUKY TRANSITION (HOUKY.TAQLE2)
- TRPOD TRANSITION (TRPOD.TAQLE2)
- ZJAAY TRANSITION (ZJAAY.TAQLE2)

NOTE: Chart not to scale.

SE-2, 26 DEC 2024 to 23 JAN 2025

SE-2, 26 DEC 2024 to 23 JAN 2025

TAQLE TWO ARRIVAL (RNAV) Transition Routes  
 (TAQLE.TAQLE2) 05OCT23

RALEIGH/DURHAM, NORTH CAROLINA  
 RALEIGH-DURHAM INTL (RDU)

(TAQLE.TAQLE2) 23278

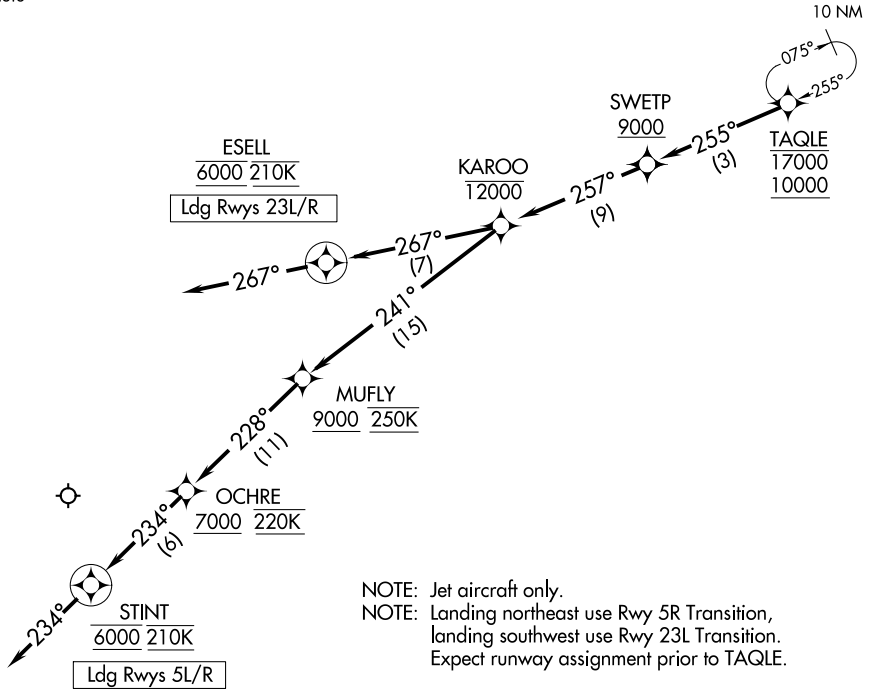
AL-516 (FAA)

RALEIGH-DURHAM INTL (RDU)  
RALEIGH/DURHAM, NORTH CAROLINA

# TAQLE TWO ARRIVAL (RNAV) Arrival Routes

RALEIGH APP CON  
124.95 318.2  
D-ATIS  
123.8

RNAV 1 - DME/DME/IRU or GPS  
RADAR required



NOTE: Chart not to scale.

## ARRIVAL ROUTE DESCRIPTION

From TAQLE on track 255° to cross SWETP at or above 9000, then on track 257° to cross KAROO at or below 12000.

**LANDING RUNWAYS 5L/R:** From KAROO on track 241° to cross MUFLY at or above 9000 and at 250K, then on track 228° to cross OCHRE at or above 7000 and at 220K, then on track 234° to cross STINT at 6000 and at 210K, then on track 234°. Expect RNP RWY 5R approach. Non-RNP aircraft: Expect RADAR vectors to final approach course.

**LANDING RUNWAYS 23L/R:** From KAROO on track 267° to cross ESELL at 6000 and at 210K, then on track 267°. Expect ILS or RNAV RWY 23L/R approach.

TAQLE TWO ARRIVAL (RNAV) Arrival Routes  
(TAQLE.TAQLE2) 05OCT23

RALEIGH/DURHAM, NORTH CAROLINA  
RALEIGH-DURHAM INTL (RDU)

SE-2, 26 DEC 2024 to 23 JAN 2025

SE-2, 26 DEC 2024 to 23 JAN 2025