

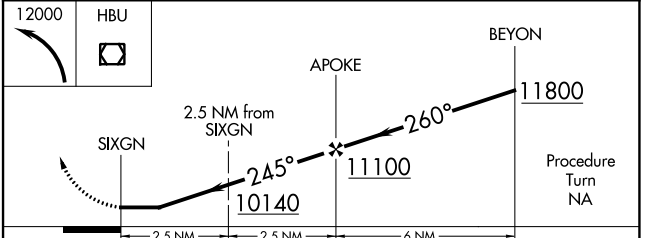
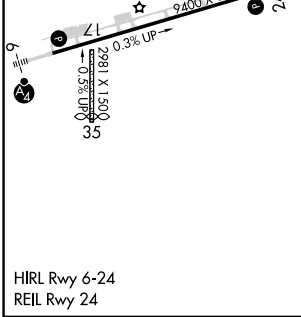
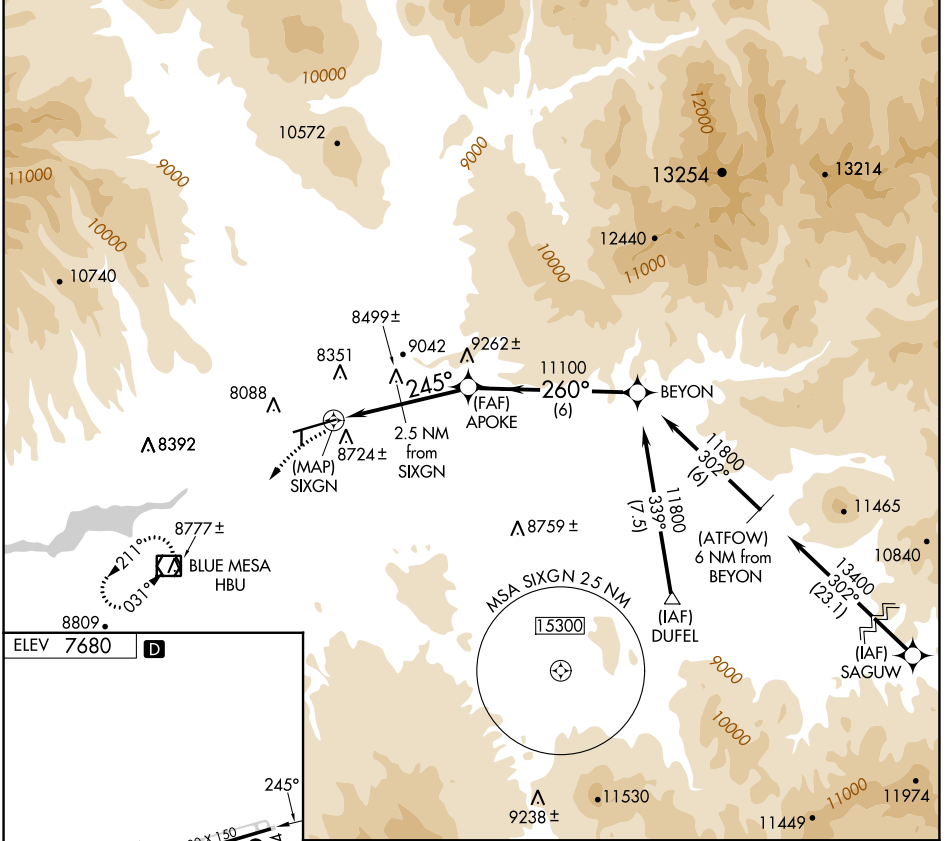
APP CRS <b>245°</b>	Rwy Idg N/A
	TDZE N/A
	Apt Elev <b>7680</b>

# GPS-B

GUNNISON-CRESTED BUTTE RGNL (GUC)

NA -26°C	Procedure not authorized when airport closed except by prior arrangement. DME/DME RNP-0.3 NA. Circling NA to Rwy 17 and 35.	MISSED APPROACH: Climbing left turn to 12000 direct HBU VOR/DME and hold.
-------------	---	---

AWOS-3PT <b>135.075</b>	DENVER CENTER <b>124.5 350.25</b>	UNICOM <b>122.7 (CTAF)</b>
----------------------------	--------------------------------------	-------------------------------



CATEGORY	A	B	C	D
CIRCLING	9180-1¼ 1500 (1500-1¼)	9180-1½ 1500 (1500-1½)	9540-3 1860 (1900-3)	10040-3 2360 (2400-3)

# GPS-B

SW-1, 26 DEC 2024 to 23 JAN 2025

SW-1, 26 DEC 2024 to 23 JAN 2025