

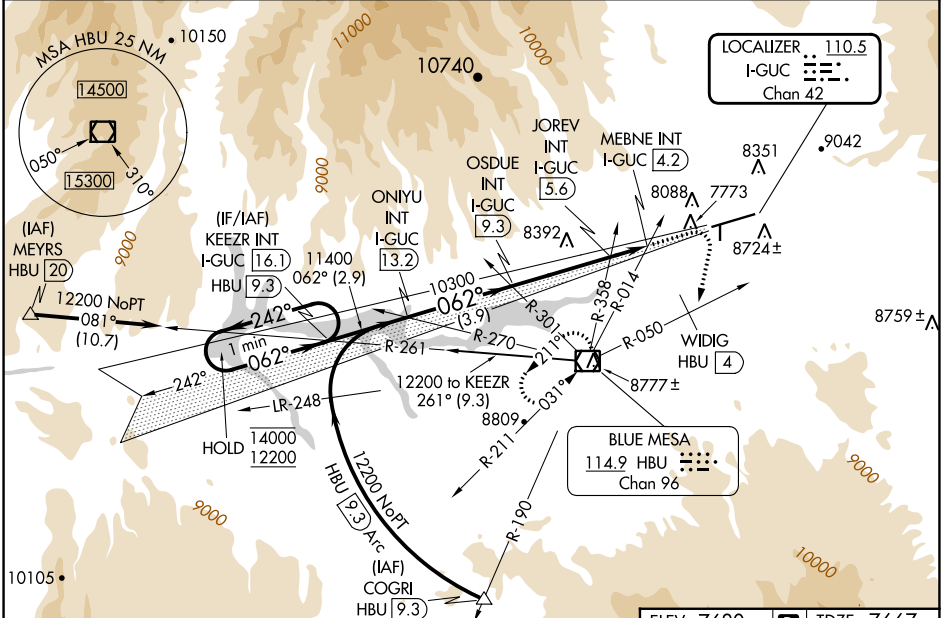
| | | |
|---|------------------------|--|
| LOC/DME I-GUC 110.5 Chan 42 | APP CRS 062° | Rwy Idg TDZE Apt Elev 9400 7667 7680 |
|---|------------------------|--|

ILS or LOC RWY 6

GUNNISON-CRESTED BUTTE RGNL (GUC)

| | | |
|---|-------|--|
| DME required. | MALSF | MISSED APPROACH: Climb to 10000 then climbing right turn to 12000 on heading 180° and HBU VOR/DME R-050 to WIDIG/HBU 4. DME continue on HBU VOR/DME R-050 to HBU VOR/DME and hold. |
| <p>▼ Rwy 6 helicopter visibility reduction below 3/4 SM NA. Inop table does not apply. Procedure NA when airport closed except by prior arrangement.</p> <p>⚠ -26°C Circling NA to Rwy's 17 and 35.</p> | | |

| | | |
|----------------------------|--------------------------------------|-------------------------------|
| AWOS-3PT 135.075 | DENVER CENTER 124.5 350.25 | UNICOM 122.7 (CTAF) |
|----------------------------|--------------------------------------|-------------------------------|



| | | | | | | | |
|--|------------------------|-----------------------|-------------------------|--------------------------|---------------|-----------|-----|
| One Minute Holding Pattern | KEEZR INT I-GUC (16.1) | 10000 | 12000 | HBU R-050 | WIDIG HBU (4) | HBU R-050 | HBU |
| | ONIYU INT I-GUC (13.2) | OSDUE INT I-GUC (9.3) | JOREV INT I-GUC (5.6) | MEBNE INT I-GUC (4.2) | | | |
| <p>14000 ← 242°</p> <p>12200 → 062°</p> <p>GS 3.20° TCH 49</p> <p>2.9 NM 3.9 NM 3.7 NM 1.4 NM 2.4 NM</p> | | | | | | | |
| CATEGORY | A | B | C | D | | | |
| S-ILS 6 | 8698-3 1031 (1100-3) | | | NA | | | |
| S-LOC 6 | 9020-3 1353 (1400-3) | | | | | | |
| CIRCLING | 9260-3 | 1580 (1600-3) | 9540-3 1860 (1900-3) | 10040-3 2360 (2400-3) | | | |
| JOREV FIX MINIMUMS | | | | | | | |
| S-LOC 6 | 8640-3 973 (1000-3) | | | | | | |
| CIRCLING | 9260-3 | 1580 (1600-3) | 9540-3 1860 (1900-3) | 10040-3 2360 (2400-3) | | | |

| | |
|-------------------|--------------------------|
| ELEV 7680 | TDZE 7667 |
| | |
| HIRL Rwy 6-24 | |
| REIL Rwy 24 | |
| FAF to MAP 5.1 NM | |
| Knots | 60 90 120 150 180 |
| Min:Sec | 5:06 3:24 2:33 2:02 1:42 |

SW-1, 26 DEC 2024 to 23 JAN 2025

SW-1, 26 DEC 2024 to 23 JAN 2025