

LOC I-CJF	APP CRS	Rwy Idg	7000
110.15	308°	TDZE	590
		Apt Elev	598

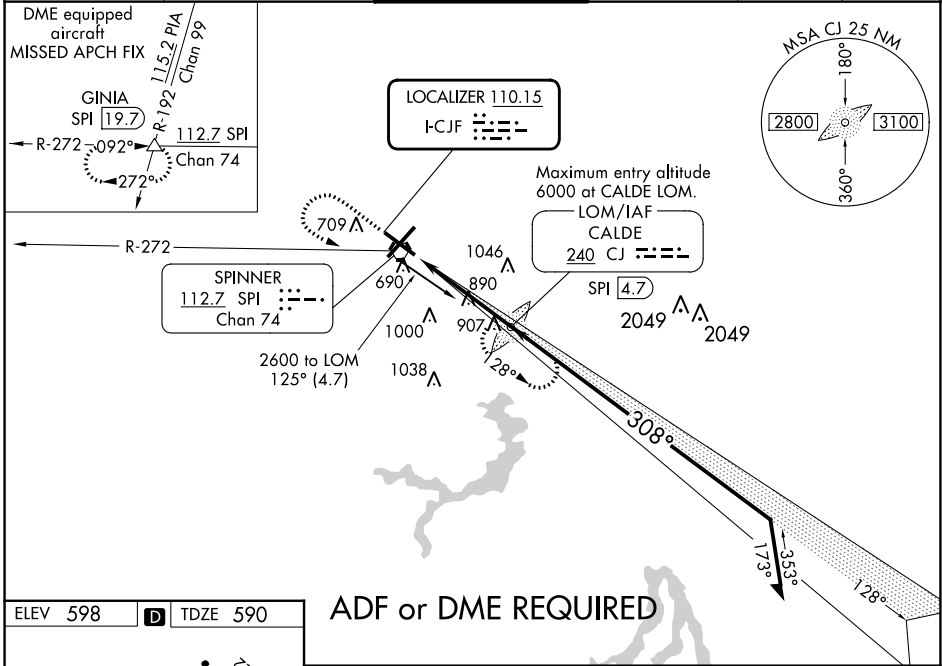
ILS or LOC RWY 31

ABRAHAM LINCOLN CAPITAL (SPI)

ADF or DME required. When local altimeter setting not received, use Logan County altimeter setting: increase DA to 848 feet and all MDA 60 feet, increase Circling Cat C/D/E visibility 1/4 SM. For inop MALS/R, increase S-ILS-31 Cat E visibility to 3/4 and S-LOC-31 Cat E visibility to 2 1/4. Autopilot coupled approach NA below 850.

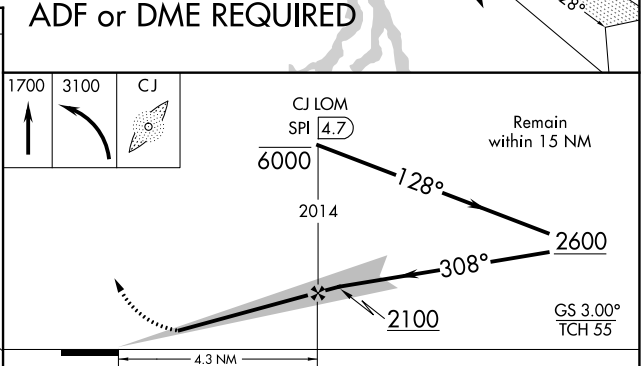
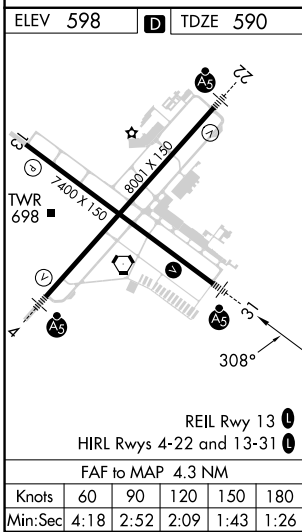
MALS/R MISSED APPROACH: Climb to 1700 then climbing left turn to 3100 direct CALDE LOM and hold. (DME equipped aircraft climb to 1700, then climbing left turn to 3200 via SPI R-272 to GINIA INT/SPI 19.7 DME and hold.)

ATIS	SAINT LOUIS APP CON *	SPRINGFIELD TOWER *	GND CON	CLNC DEL	UNICOM
127.65 270.1	126.15 323.0	121.3 (CTAF) 257.8	121.9 348.6	121.7	122.95



EC-3, 26 DEC 2024 to 23 JAN 2025

EC-3, 26 DEC 2024 to 23 JAN 2025



CATEGORY	A	B	C	D	E
S-ILS 31	790-1/2 200 (200-1/2)				
S-LOC 31	1200-1/2 610 (700-1/2)	1200-1/4 610 (700-1/4)	1200-1/2 610 (700-1/2)	1200-1/4 610 (700-1/4)	1200-3/4 610 (700-3/4)
CIRCLING	1200-1 602 (700-1)	1360-2 762 (800-2 1/4)	1380-2 782 (800-2 1/2)	1380-2 782 (800-2 1/2)	1380-2 782 (800-2 1/2)