


WAAS CH 81809 W22A	APP CRS 223°	Rwy Idg TDZE Apt Elev	8001 598 598
--	------------------------	-----------------------------	---

RNAV (GPS) RWY 22

ABRAHAM LINCOLN CAPITAL (SPI)

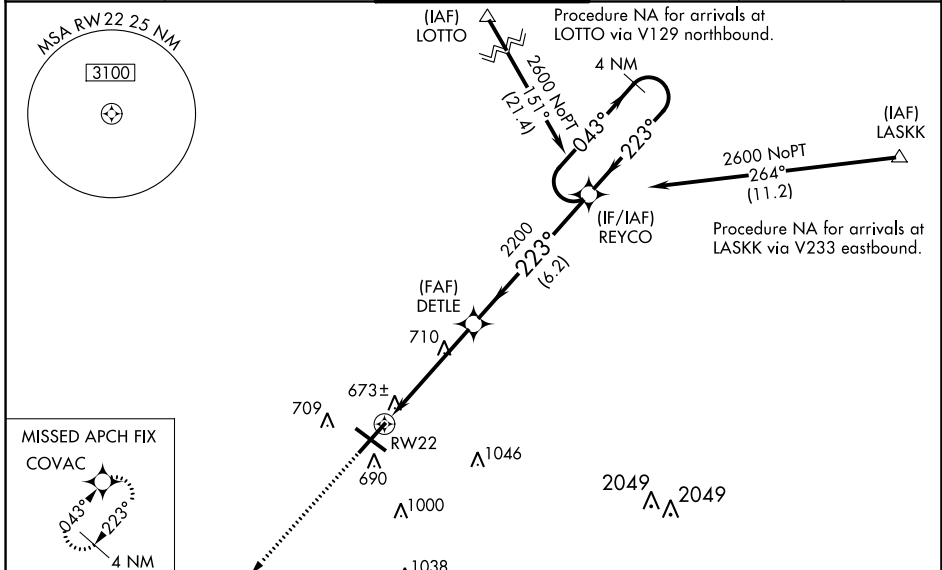
RNP APCH - GPS.

ASR For uncompensated Baro-VNAV systems, LNAV/VNAV NA below -16°C or above 54°C. When local altimeter not received, use Lincoln altimeter setting: increase LPV DA to 942 feet and all visibilities 1/8 SM, LNAV/VNAV DA to 1108 feet and all visibilities 1/8 SM; increase all MDAs 60 feet and visibility LNAV and Circling Cat C/D 1/4 SM. Baro-VNAV and VDP NA when using Lincoln altimeter setting. For inop ALS, increase LPV all Cats visibility to 3/8 SM. For inop ALS when using Lincoln altimeter setting, increase LPV all Cats visibility to 1 SM, increase LNAV/VNAV all Cats visibility to 1 3/8 SM.

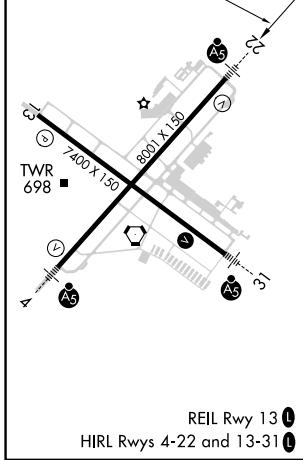
MALS R 

MISSED APPROACH: Climb to 2700 direct COVAC and hold.

ATIS 127.65 270.1	SAINT LOUIS APP CON ★ 126.15 323.0	SPRINGFIELD TOWER ★ 121.3 (CTAF) 0 257.8	GND CON 121.9 348.6	CLNC DEL 121.7	UNICOM 122.95
-----------------------------	--	--	-------------------------------	--------------------------	-------------------------



ELEV 598	D	TDZE 598
----------	----------	----------



2700	↑	COVAC					
			1 NM to RW22	3.8 NM	6.2 NM	4 NM Holding Pattern	REYCO
						DETLE	
							RW22
							GP 3.00° TCH 54
CATEGORY		A	B	C	D		
LPV DA		884-1/2		286 (300-1/2)			
LNAV/VNAV DA		1050-7/8		452 (500-7/8)			
LNAV MDA		980-1/2	382 (400-1/2)	980-5/8	382 (400-5/8)		
C CIRCLING		1040-1 1/4 442 (500-1 1/4)	1100-1 1/4 502 (600-1 1/4)	1360-2 1/4 762 (800-2 1/4)	1380-2 1/2 782 (800-2 1/2)		