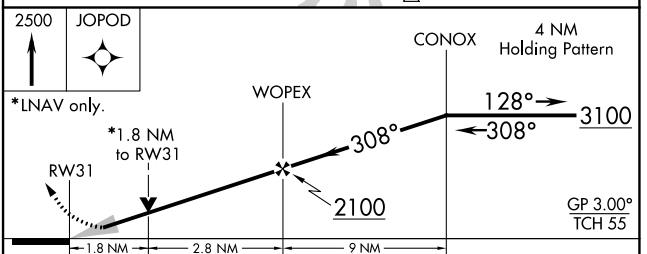
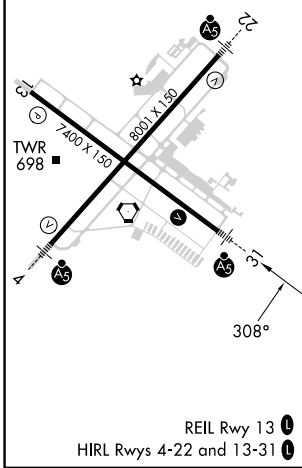
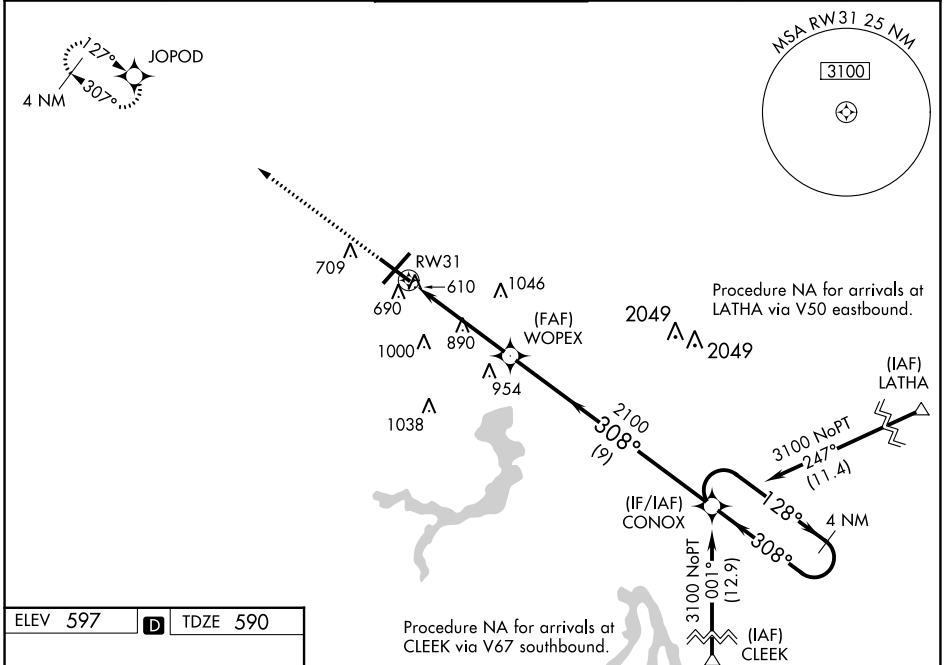


WAAS CH 90124 W31A	APP CRS 308°	Rwy Idg TDZE Apt Elev	7000 590 597
--	------------------------	-----------------------------	---

RNAV (GPS) RWY 31

ABRAHAM LINCOLN CAPITAL (SPI)

<p>⚠ DME/DME RNP-0.3 NA. Baro-VNAV NA below -16°C (4°F). When local altimeter setting not received, use Lincoln altimeter setting: increase all DA 57 feet and MDA 60 feet, increase Circling Cat C and D visibility ¼ SM. VDP and ASR Baro-VNAV NA when using Logan County altimeter setting. For inoperative MALSR, increase LPV visibility to ¾ all Cats, increase LNAV/VNAV Cat D visibility to 1.</p>		<p>MALSR</p>	<p>MISSED APPROACH: Climb to 2500 direct JOPOD and hold.</p>		
<p>ATIS 127.65 270.1</p>	<p>SAINT LOUIS APP CON * 126.15 323.0</p>	<p>SPRINGFIELD TOWER * 121.3 (CTAF) 257.8</p>	<p>GND CON 121.9 348.6</p>	<p>CLNC DEL 121.7</p>	<p>UNICOM 122.95</p>



CATEGORY	A	B	C	D
LPV DA	840-½ 250 (300-½)			
LNAV/VNAV DA	865-½ 275 (300-½)			865-¾ 275 (300-¾)
LNAV MDA	1200-½ 610 (700-½)	1200-1¼ 610 (700-1¼)		1200-1½ 610 (700-1½)
C CIRCLING	1200-1 603 (700-1)	1360-2¼ 762 (800-2¼)		1380-2½ 782 (800-2½)

EC-3, 26 DEC 2024 to 23 JAN 2025

EC-3, 26 DEC 2024 to 23 JAN 2025