

LOC/DME I-ACV 109.5 Chan 32	APP CRS 316°	Rwy Idg 5846 TDZE 221 Apt Elev 222
--	------------------------	---

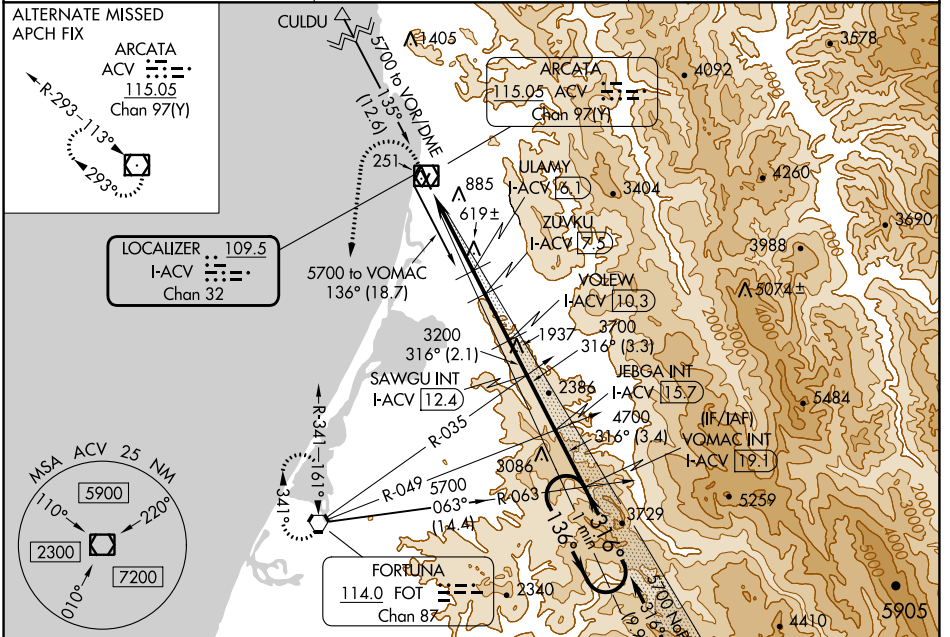
ILS or LOC RWY 32

CALIFORNIA REDWOOD COAST-HUMBOLDT COUNTY (ACV)

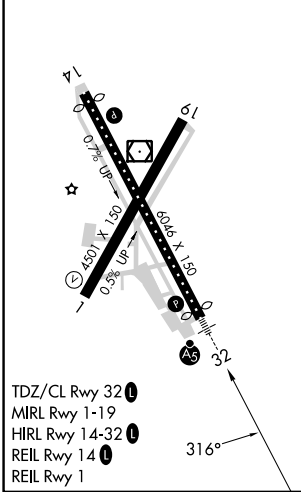
NA Circling NA northeast of Rwy 14-32. DME required.

MALSR
MISSED APPROACH: Climb to 800 then climbing left turn to 3000 direct FOT VORTAC and hold.

ASOS 118.525	SEATTLE CENTER 124.85 306.3	UNICOM 123.0 (CTAF)
------------------------	---------------------------------------	-------------------------------



ELEV 222	D	TDZE 221
----------	----------	----------



Use I-ACV DME when on the localizer course. VGSI and ILS glidepath not coincident (VGSI Angle 3.00/TCH 43).

VOMAC I-ACV 19.1 One Minute Holding Pattern

***LOC only**

ULMY I-ACV 6.1
ZUVKU I-ACV 7.5
VOLEW I-ACV 10.3
SAWGU I-ACV 12.4
JEBGA I-ACV 15.7

I-ACV 1.1, 3, 1860*, 2320*, 3200, 3700, 4700, 5700

136° → ← 316°

GS 3.00° TCH 47

CATEGORY	A	B	C	D
S-ILS 32	441/18 220 (300-1/2)			
S-LOC 32	880/24	659 (700-1/2)	880-1 3/8	659 (700-1 3/8)
C CIRCLING	880-1	658 (700-1)	880-1 7/8	880-2 658 (700-2)

SW-2, 26 DEC 2024 to 23 JAN 2025

SW-2, 26 DEC 2024 to 23 JAN 2025