

WAAS CH <b>99715</b> <b>W12A</b>	APP CRS <b>120°</b>	Rwy Idg TDZE Apt Elev	<b>6508</b> <b>15</b> <b>15</b>
--	------------------------	-----------------------------	---------------------------------------

# RNAV (GPS) RWY 12

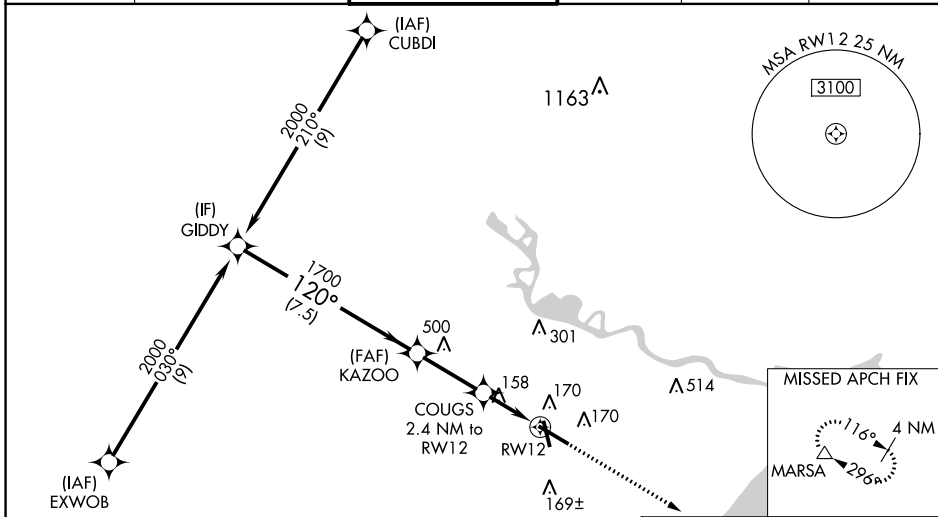
JACK BROOKS RGNL (BPT')

RNP APCH - GPS.

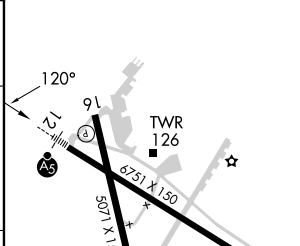
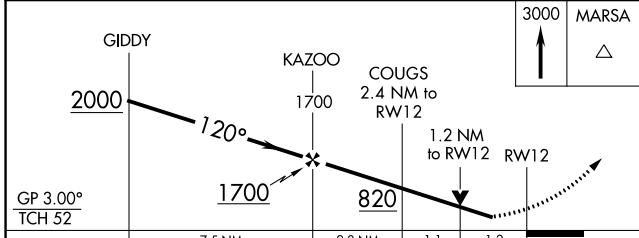
**▼** For uncompensated Baro-VNAV systems, LNAV/VNAV NA below -4°C or above 54°C. Baro-VNAV and VDP NA when using Orange County altimeter setting. Rwy 12 helicopter visibility reduction below RVR 4000 NA. When local altimeter setting not received, use Orange altimeter setting; increase LPV DA to 297 feet; increase LNAV/VNAV DA to 464 feet and all visibilities to RVR 4500; increase all MDAs 40 feet and LNAV visibility Cat C/D/E to RVR 5000 and Circling visibility Cat E ¼ SM. Inop table does not apply to LPV. For inop ALS, increase LNAV/VNAV visibility all Cats to RVR 6000; LNAV Cats A/B to RVR 5500, Cat E to 1¾ SM. For inop ALS when using Orange County altimeter setting, increase LPV all Cats visibility to RVR 4500, LNAV/VNAV visibility Cat E to 1¾ SM; and increase LNAV visibility Cats A/B to RVR 5500, Cats C/D/E 1¾ SM.

MALSR  
MISSED APPROACH:  
Climb to 3000 direct  
MARSA and hold.

ATIS <b>126.3</b>	HOUSTON APP CON <b>121.3 377.1</b>	BEAUMONT TOWER* <b>119.5</b> (CTAF) <b>0</b>	GND CON <b>124.85</b>	CLNC DEL <b>118.3</b>	UNICOM <b>122.95</b>
----------------------	---------------------------------------	---	--------------------------	--------------------------	-------------------------



ELEV 15	TDZE 15
---------	---------



CATEGORY	A	B	C	D	E
LPV DA		265/40	250 (300-¾)		
LNAV/VNAV DA		432/40	417 (500-¾)		
LNAV MDA	460/40	445 (500-¾)	460/45	445 (500-¾)	
CIRCLING	480-1	465 (500-1)	640-1¾ 625 (700-1¾)	760-2½ 745 (800-2½)	820-2¾ 805 (900-2¾)

REIL Rwy 16, 30 and 34 **0**  
 HIRL Rwy 12-30, 16-34 **0**

SC-5, 26 DEC 2024 to 23 JAN 2025

SC-5, 26 DEC 2024 to 23 JAN 2025