

VORTAC PSB <b>115.5</b> Chan <b>102</b>	APP CRS <b>256°</b>	Rwy Idg TDZE Apt Elev	<b>5006</b> <b>1917</b> <b>1948</b>
---	------------------------	-----------------------------	---

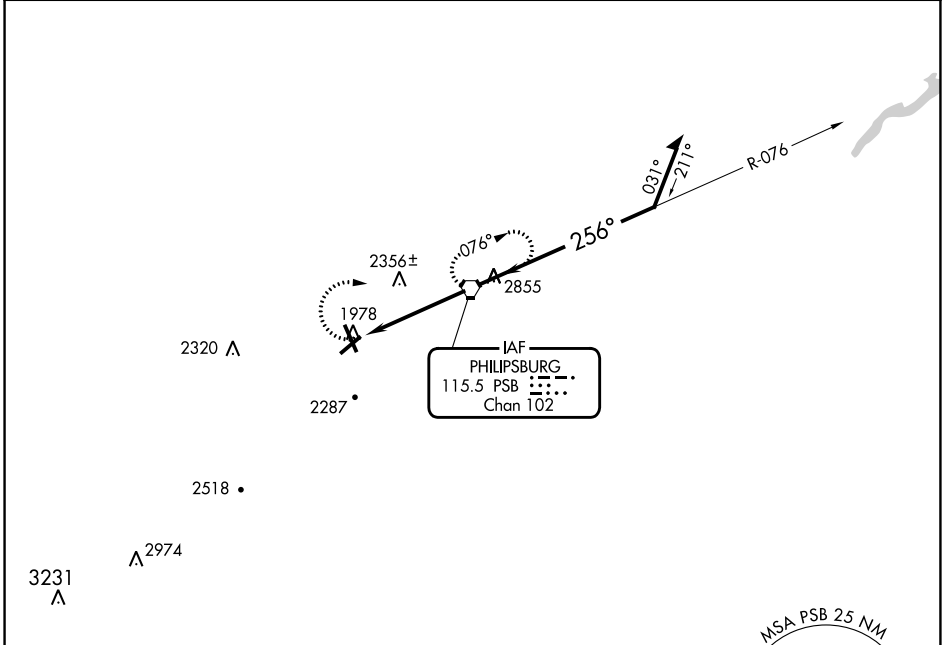
# VOR RWY 24

MID-STATE (PSB)

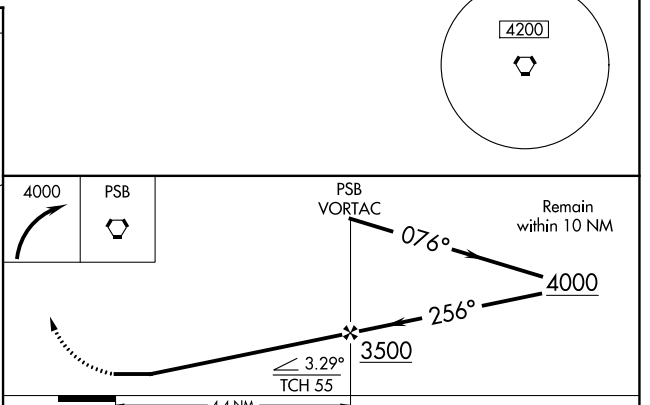
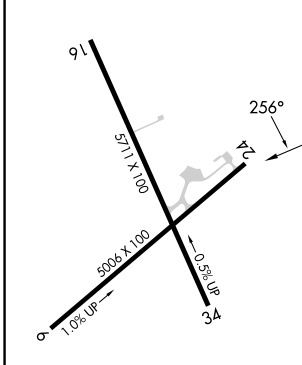
**▼** Use State College altimeter setting, when not received use Clearfield altimeter setting.  
**▲ NA** Procedure NA at night. Circling NA for Cat D east of Rwy 16-34.  
 Rwy 24 helicopter visibility reduction below 1 SM NA.

**MISSED APPROACH:** Climbing right turn to 4000 direct PSB VORTAC and hold.

AWOS-3 <b>127.525</b>	UNV AWOS-3 <b>127.65</b>	NEW YORK CENTER <b>134.8 338.3</b>	CTAF <b>122.9</b> <b>①</b>
--------------------------	-----------------------------	---------------------------------------	-------------------------------



ELEV <b>1948</b>	TDZE <b>1917</b>
------------------	------------------



MIRL Rwys 6-24 and 16-34 **①**

FAF to MAP 4.4 NM

	60	90	120	150	180
Knots	60	90	120	150	180
Min:Sec	4:24	2:56	2:12	1:46	1:28

CATEGORY	A		B		C		D	
	3040-1¼	1123 (1100-1¼)	3040-1½	1123 (1100-1½)	3040-3	1123 (1100-3)	3040-3	1092 (1100-3)
<b>☑</b> CIRCLING	3040-1¼	1092 (1100-1¼)	3040-1½	1092 (1100-1½)	3040-3	1092 (1100-3)		

NE-4, 26 DEC 2024 to 23 JAN 2025

NE-4, 26 DEC 2024 to 23 JAN 2025