

APP CRS **242°**
 Rwy Idg **7312**
 TDZE **6472**
 Apt Elev **6472**

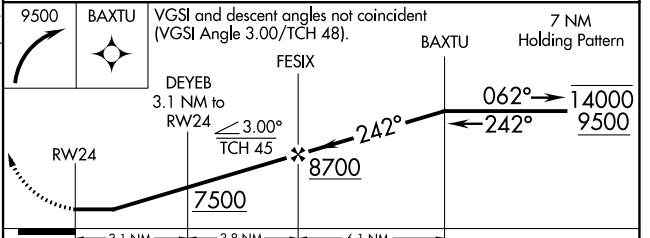
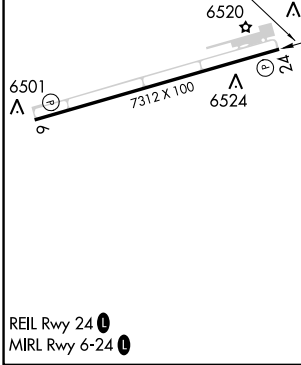
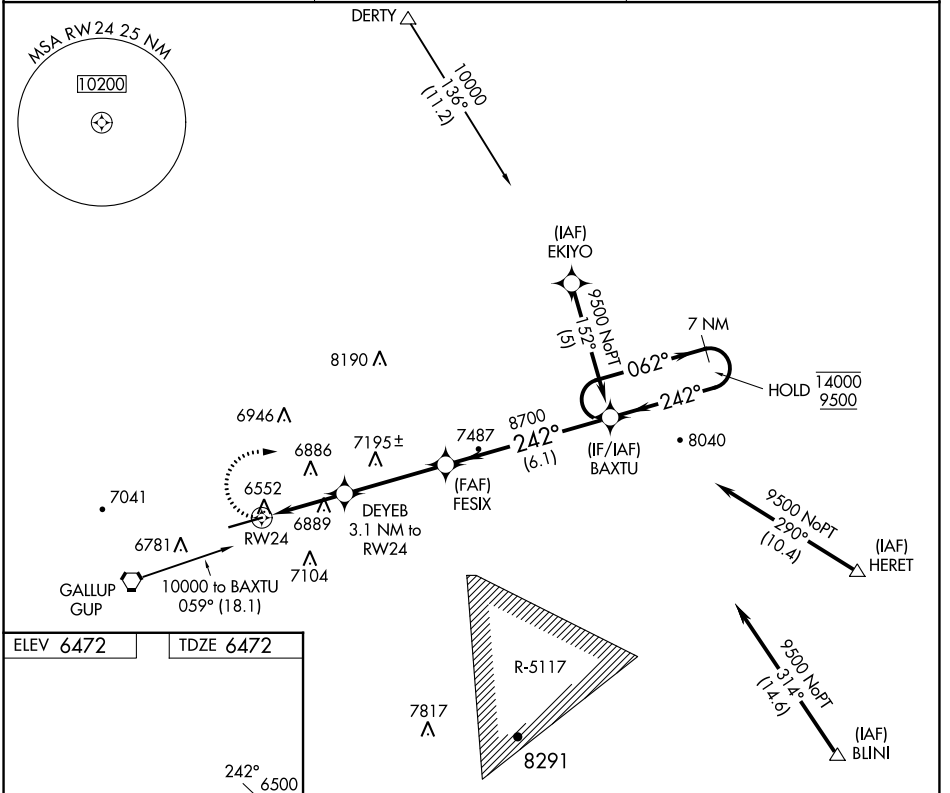
RNAV (GPS) RWY 24

GALLUP MUNI (GUP)

RNP APCH. MISSED APPROACH: Climbing right turn to 9500 direct BAXTU and hold.

Rwy 24 helicopter visibility reduction below 3/4 SM NA.

ASOS **118.375** ALBUQUERQUE CENTER **124.325 288.25** UNICOM **122.95 (CTAF) 0**



CATEGORY	A	B	C	D
LNNAV MDA	7360-1/4	888 (900-1/4)	7360-2 1/2	888 (900-2 1/2)
CIRCLING	7360-1/4	888 (900-1/4)	7460-3 988 (1000-3)	7720-3 1248 (1300-3)

SW-1, 26 DEC 2024 to 23 JAN 2025

SW-1, 26 DEC 2024 to 23 JAN 2025