

WAAS CH <b>70608</b> <b>W06A</b>	APP CRS <b>051°</b>	Rwy Idg <b>7400</b> TDZE <b>2291</b> Apt Elev <b>2320</b>
--	------------------------	---

# RNAV (GPS) RWY 6

COEUR D'ALENE/PAPPY BOYINGTON FLD (COE)

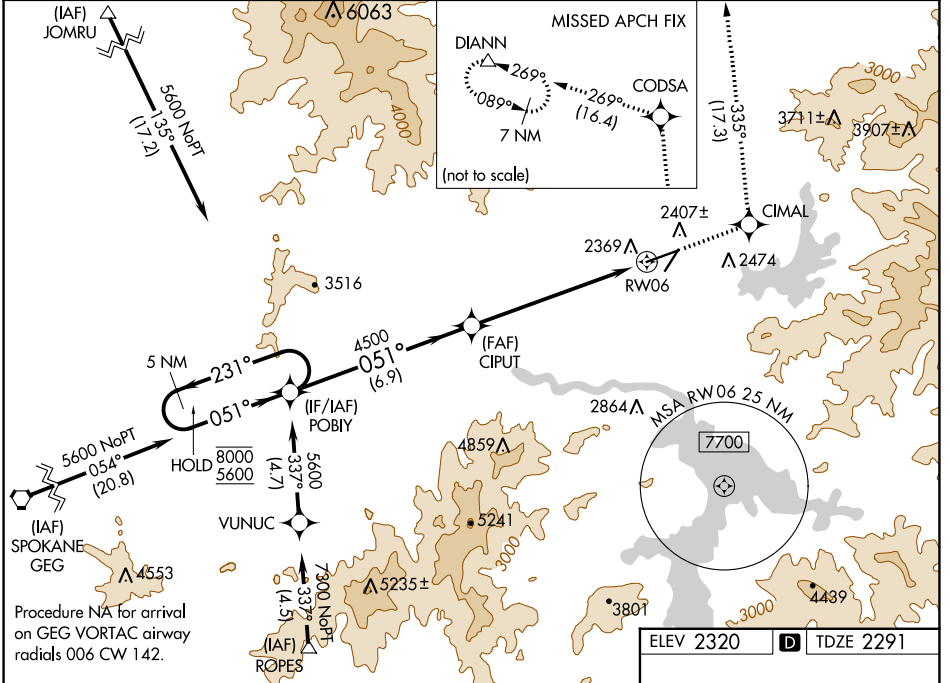
RNP APCH - GPS.

⚠ Circling Rwy 2 NA at night. For uncompensated Baro-VNAV systems, LNAV/VNAV NA below -21°C or above 53°C. Circling NA for Cat D southeast of Rwy 6-24.

MALSRS

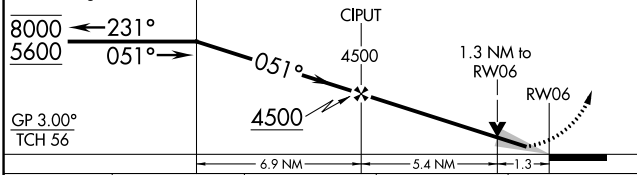
MISSED APPROACH: Climb to 7000 direct CIMAL and on track 335° to CODSA and on track 269° to DIANN and hold.

AWOS-3PT <b>135.075</b>	SPOKANE APP CON <b>132.1 263.0</b>	UNICOM <b>122.8 (CTAF)</b>
----------------------------	---------------------------------------	-------------------------------

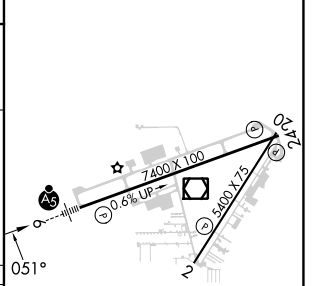


Procedure NA for arrival on GEG VORTAC airway radials 006 CW 142.

7000	CIMAL	tr 335°	CODSA	tr 269°	DIANN
------	-------	---------	-------	---------	-------



ELEV 2320	<b>D</b>	TDZE 2291
-----------	----------	-----------



CATEGORY	A	B	C	D
LPV DA		2491-½	200 (200-½)	
LNAV/VNAV DA		2654-¾	363 (400-¾)	
LNAV MDA	2740-½	449 (500-½)	2740-1	449 (500-1)
CIRCLING	2740-1 420 (500-1)	2880-1 560 (600-1)	3020-2 700 (700-2)	3180-2¾ 860 (900-2¾)

MIRL Rwy 2-20 **I**  
HIRL Rwy 6-24 **I**  
REIL Rws 2 and 24 **I**

NW-1, 26 DEC 2024 to 23 JAN 2025

NW-1, 26 DEC 2024 to 23 JAN 2025