

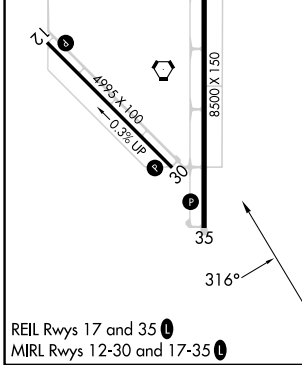
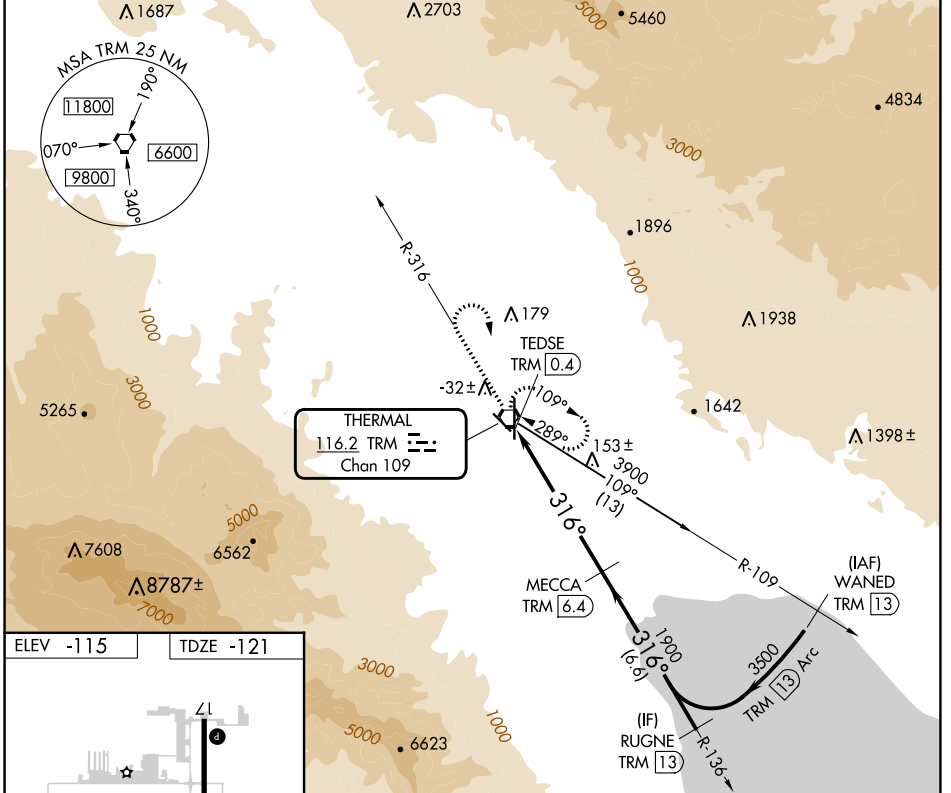
VORTAC TRM 116.2 Chan 109	APP CRS 316°	Rwy Idg TDZE -121 Apt Elev -115	4995
---	------------------------	---	-------------

VOR RWY 30

JACQUELINE COCHRAN RGNL (TRM)

DME required.		MISSED APPROACH: Climb to 1300 on TRM VORTAC R-316 then climbing right turn to 5400 direct TRM VORTAC and hold, continue climb-in-hold to 5400.	
Rwy 30 helicopter visibility reduction below 3/4 SM NA.			

ASOS 118.325	SOCAL APP CON 135.275 251.1	CLNC DEL 120.225	UNICOM 123.0 (CTAF) 0
------------------------	---------------------------------------	----------------------------	---------------------------------



1300	5400	TRM	VGSI and descent angles not coincident (VGSI Angle 3.00/TCH 25).
TRM R-316			
TRM VORTAC	TRM TEDSE [0.4]	TRM MECCA [6.4]	TRM RUGNE [13]
			3500
			1900
			316°
			3.13° TCH 45
			1.3 4.7 NM 6.6 NM

CATEGORY	A	B	C	D
S-30	300-1	421 (500-1)	300-1½	421 (500-1½)
CIRCLING	320-1 435 (500-1)	340-1 455 (500-1)	460-1½ 575 (600-1½)	780-3 895 (900-3)