

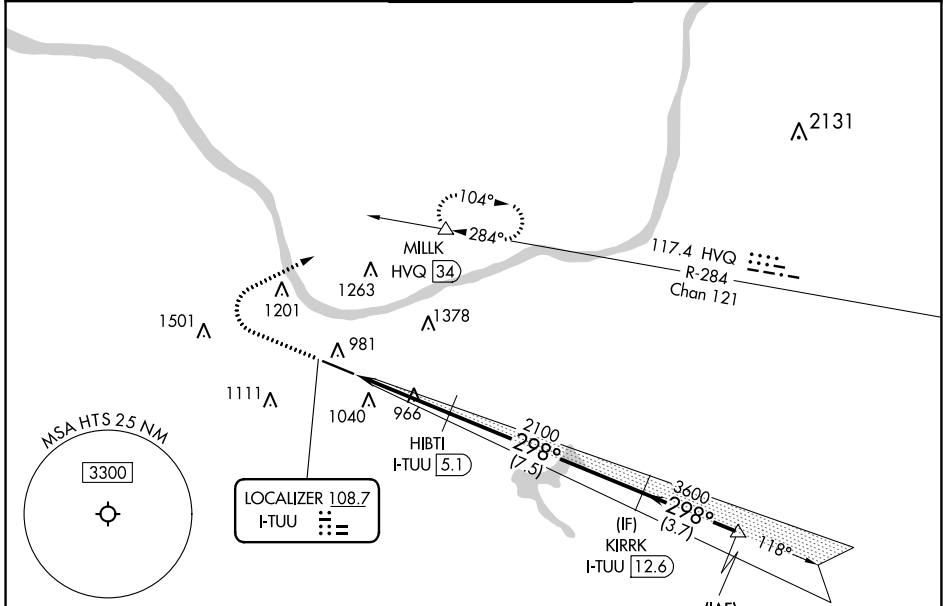
LOC I-TUU 108.7	APP CRS 298°	Rwy Idg 6516	TDZE 828
		Apt Elev 828	

ILS or LOC RWY 30

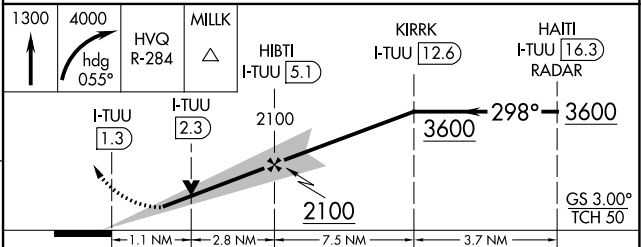
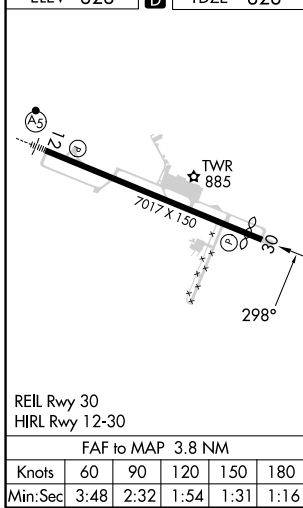
TRI-STATE/MILTON J FERGUSON FLD (HTS)

DME required. RADAR required for procedure entry at HAITI.		MISSED APPROACH: Climb to 1300 then climbing right turn to 4000 heading 055° and on HVQ VOR/DME R-284 to MILLK/HVQ 34 DME and hold, continue climb-in-hold to 4000.		
--	--	---	--	--

ATIS 125.2	HUNTINGTON APP CON 119.75 270.1	HUNTINGTON TOWER 118.5 270.1	GND CON 121.9	CLNC DEL 118.05
----------------------	---	--	-------------------------	---------------------------



ELEV 828	D	TDZE 828
----------	----------	----------



CATEGORY	A	B	C	D
S-ILS 30	1028-¾ 200 (200-¾)			
S-LOC 30	1220-1	392 (400-1)	1220-1½	392 (400-1½)
C CIRCLING	1300-1 472 (500-1)	1380-1 552 (600-1)	1520-2 692 (700-2)	1740-3 912 (1000-3)

ILS or LOC RWY 30

NE-4, 26 DEC 2024 to 23 JAN 2025

NE-4, 26 DEC 2024 to 23 JAN 2025