

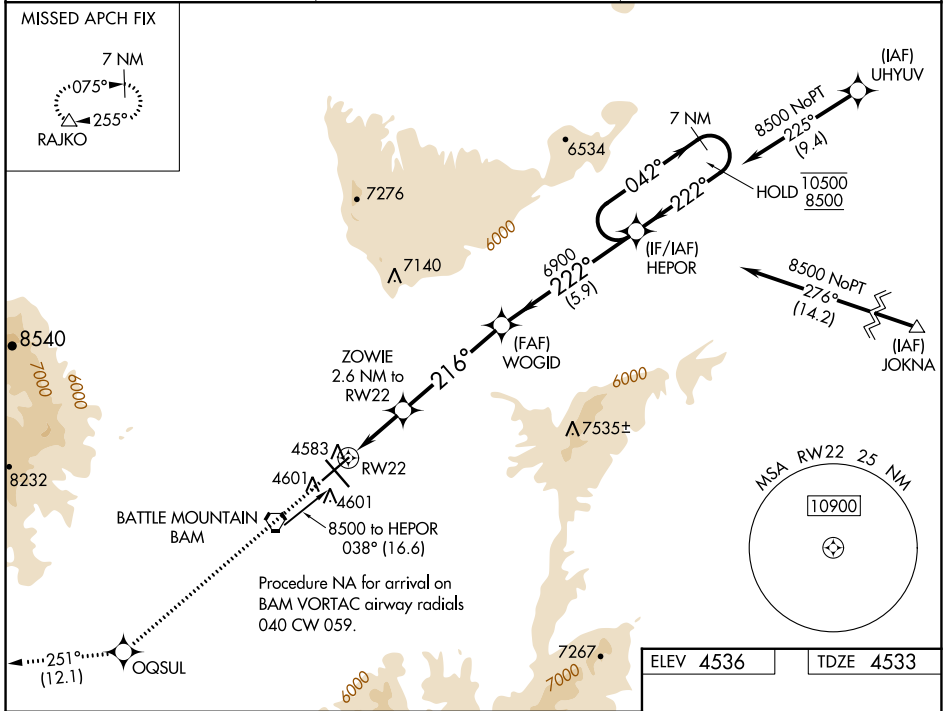
WAAS CH <b>82741</b> <b>W22A</b>	APP CRS <b>216°</b>	Rwy Idg <b>7300</b> TDZE <b>4533</b> Apt Elev <b>4536</b>
--	------------------------	---

# RNAV (GPS) RWY 22

BATTLE MOUNTAIN (BAM)

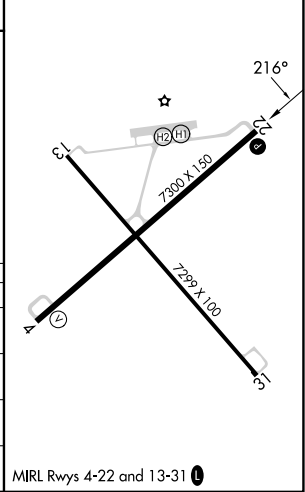
RNP APCH. ▼ ▲ Baro-VNAV NA.	MISSED APPROACH: Climb to 11900 direct OQSUL and track 251° to RAJKO and hold, continue climb-in-hold to 11900.
-----------------------------------	---

AWOS-3 <b>119.45</b>	SALT LAKE CITY CENTER <b>132.25 338.35</b>	UNICOM <b>122.8 (CTAF)</b> ①
-------------------------	---	---------------------------------



11900 OQSUL	tr 251°	RAJKO	VGSI and RNAV glidepath not coincident (VGSI Angle 3.00/TCH 45).	7 NM Holding Pattern
*LNAV only.		ZOWIE 2.6 NM to RWY 22	WOGID 6900	HEPOR 10500 / 8500
*0.8 NM to RWY 22		5400*	222°	042° → 10500 / ← 222° 8500
0.8 NM		1.8 NM	4.7 NM	5.9 NM
GP 3.00° TCH 51				

ELEV 4536	TDZE 4533
-----------	-----------



CATEGORY	A	B	C	D
LPV DA		4753-1	220 (300-1)	
LNAV/VNAV DA		4808-1	275 (300-1)	
LNAV MDA	4980-1	447 (500-1)	4980-1 $\frac{3}{8}$	447 (500-1 $\frac{1}{8}$ )
② CIRCLING	4980-1 444 (500-1)	5000-1 464 (500-1)	5000-1 $\frac{1}{2}$ 464 (500-1 $\frac{1}{2}$ )	5460-3 924 (1000-3)

MRL Rwy 4-22 and 13-31 ①

SW-4, 26 DEC 2024 to 23 JAN 2025

SW-4, 26 DEC 2024 to 23 JAN 2025