

# HI-ILS or LOC/DME RWY 32

LOC I-BKF <b>109.7</b>	APCH CRS <b>323°</b>	Rwy ldg <b>11,006</b> TDZE <b>5663</b> Arprt Elev <b>5663</b>	AL-538 [USAF]	BUCKLEY SFB (KBKF)
---------------------------	-------------------------	---	---------------	--------------------

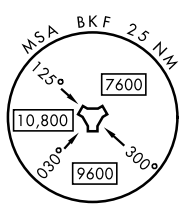
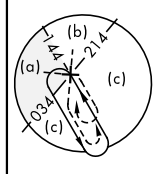
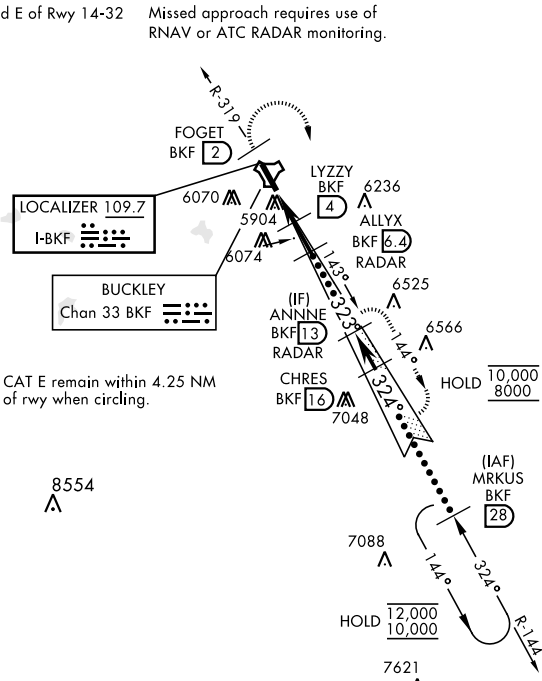
▼ \* When ALS inop, increase CAT CDE RVR to 40 and vis to  $\frac{3}{4}$  miles.  
 \*\* When ALS inop, increase CAT CDE vis to  $1\frac{1}{4}$  miles.



**MISSED APPROACH:** Climb on BKF TACAN R-319 to FOGET, then climbing right turn to 8200 and intercept BKF R-144 to ANNNE and hold or as directed by ATC.

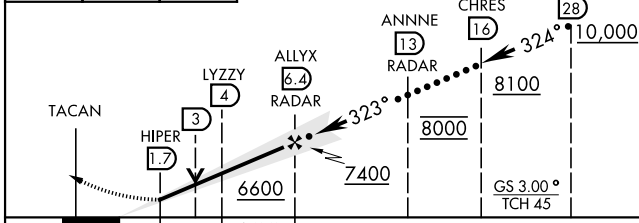
ATIS ★ <b>119.675 259.3</b>	DENVER APP CON <b>128.45 251.075</b>	TOWER ★ <b>121.0 291.675</b>	GND CON <b>121.6 275.8</b>	CLNC DEL <b>121.6 275.8</b>
--------------------------------	---	---------------------------------	-------------------------------	--------------------------------

\*\*\* Circling not authorized E of Rwy 14-32 Missed approach requires use of RNAV or ATC RADAR monitoring.

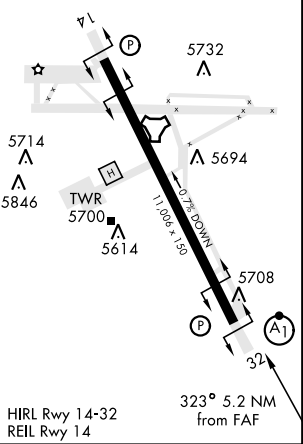


CAT E remain within 4.25 NM of rwy when circling.

EMERG SAFE ALT 100 NM 16,500



ELEV 5663	TDZE 5663
-----------	-----------



CATEGORY	C	D	E
S-ILS 32*	5863/24	200	(200- $\frac{1}{2}$ )
S-LOC 32**	6280- $1\frac{3}{8}$	617	(700- $1\frac{3}{8}$ )
<b>CIRCLING</b> ***	6360-2 697 (700-2)	6400-2 $\frac{1}{4}$ 737 (800-2 $\frac{1}{4}$ )	6420-2 $\frac{3}{4}$ 757 (800-2 $\frac{3}{4}$ )

# HI-ILS or LOC/DME RWY 32

SW-1, 26 DEC 2024 to 23 JAN 2025

SW-1, 26 DEC 2024 to 23 JAN 2025