

APP CRS **270°**
 Rwy Idg **5005**
 TDZE **956**
 Apt Elev **983**

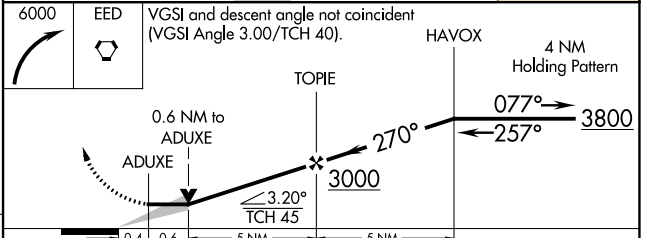
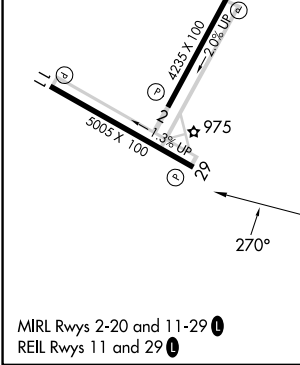
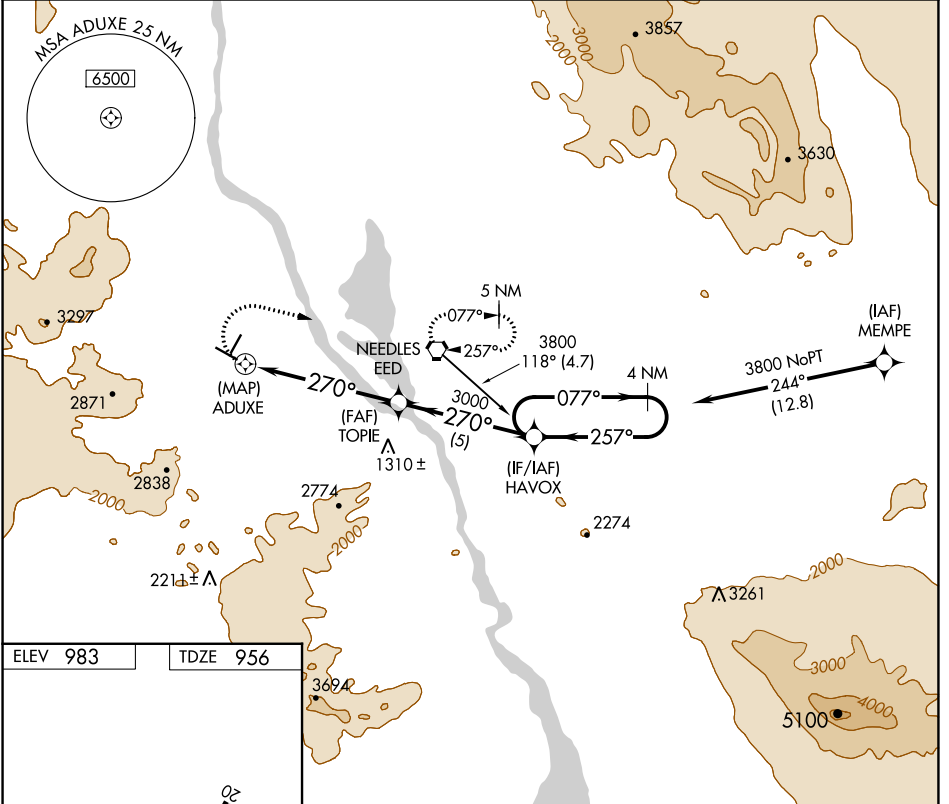
RNAV (GPS) RWY 29

NEEDLES (EED)

⚠ Straight-in minimums not authorized at night.
 GPS or RNP-0.3 required. DME/DME RNP-0.3 NA.
 Circling NA for Cats C and D south of Rwy 11-29.

⚠ MISSED APPROACH: Climbing right turn to 6000 direct to EED VORTAC and hold.

ASOS 128.325	LOS ANGELES CENTER 134.65 360.65	UNICOM 123.0 (CTAF) 0
------------------------	--	---------------------------------



CATEGORY	A	B	C	D
LNAV MDA	1300-1 344 (400-1)			1300-1½ 344 (400-1½)
CIRCLING	1560-1 577 (600-1)	1680-1 697 (700-1)	1680-2 697 (700-2)	1960-3 977 (1000-3)

SW-3, 26 DEC 2024 to 23 JAN 2025

SW-3, 26 DEC 2024 to 23 JAN 2025