

HI-ILS or LOC Z RWY 31

LOC I-OFF 109.5	APCH CRS 307°	Rwy ldg 10,612 TDZE 991 Arprt Elev 1048
---------------------------	-------------------------	--

[USAF]

OFFUTT AFB (KOFF)

RADAR or DME required

- ▼ * When ALS inop, increase CAT CDE RVR to 40 and vis to ¾ mile.
- ** When ALS inop, increase CAT CDE RVR to 55 and vis to 1 mile.
- *** Circling not authorized N of Rwy 13-31.

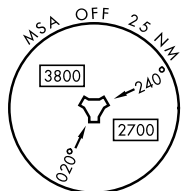
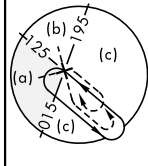
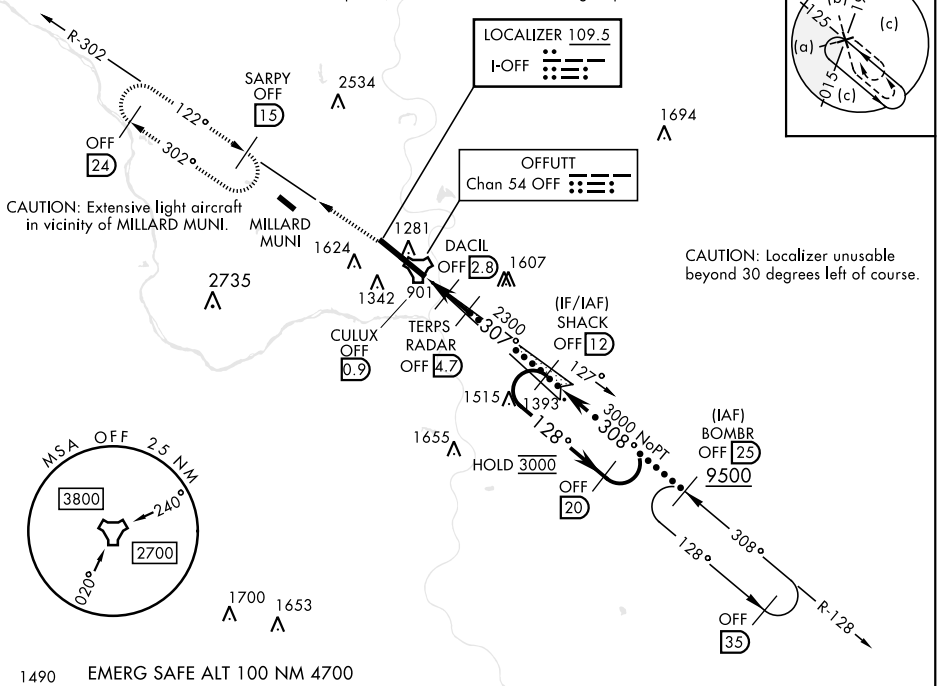


MISSED APPROACH: Climb to 3000 via OFF TACAN R-302 to SARPY and hold.

ATIS 126.025 273.5	OMAHA APP CON 124.5 263.0 (E) 135.875 354.05 (W)	TOWER 123.7 279.625	GND CON 121.7 289.4
------------------------------	--	-------------------------------	-------------------------------

RVR 1800 authorized with use of FD or AP or HUD to DA.

CAUTION: When circling to Rwy 13 at night, operational VGSI required, remain on or above VGSI glidepath until threshold.



NC-2, 26 DEC 2024 to 23 JAN 2025

NC-2, 26 DEC 2024 to 23 JAN 2025

3000 OFF R-302	SARPY OFF 15	TERPS RADAR OFF 4.7	SHACK OFF 12	OFF 20
OFF TACAN	CULUX OFF 0.9	DACIL OFF 2.8	OFF 1.5	OFF 2.8
<p>1720 2300 3000 3000 3000</p> <p>GS 2.80° TCH 58</p>				
CATEGORY	C	D	E	
S-ILS 31*	1192/24	200	(200-½)	
S-LOC 31**	1360/35	368	(400-¾)	
CIRCLING ***	1660-1¾ 612 (700-1¾)	1940-3	892	(900-3)

ELEV	1048	TDZE	991
<p>Rwy 13 ldg 10,695' Rwy 31 ldg 10,612'</p>			
<p>FAF to MAP 3.8 NM</p>			
Knots	120	140	160 180 200
Min:Sec	1:54	1:38	1:26 1:16 1:08

HI-ILS or LOC Z RWY 31