

OMAHA, NEBRASKA

# ILS or LOC RWY 13

LOC I-ATB <b>111.7</b>	APCH CRS <b>127°</b>	Rwy ldg <b>10,695</b> TDZE <b>1048</b> Arpt Elev <b>1048</b>
---------------------------	-------------------------	--

[USAF]

OFFUTT AFB (KOFF)

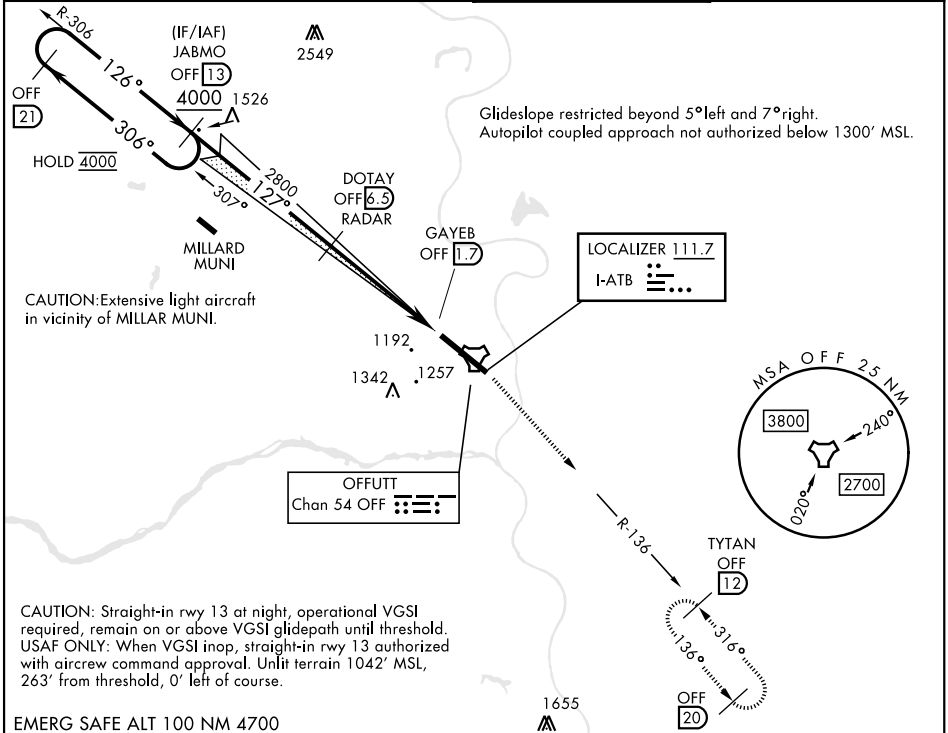
RADAR or DME required

ALSF-1 (A1)

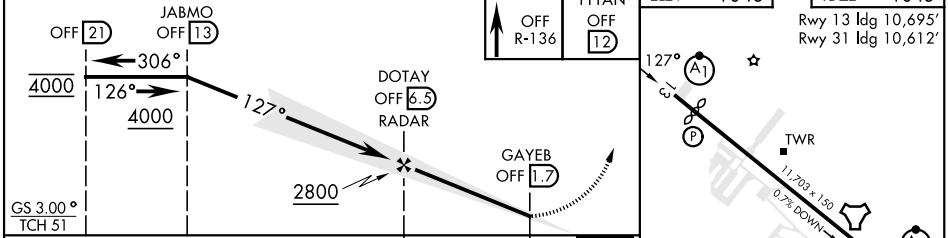
MISSED APPROACH: Climb to 3000 via OFF TACAN R-136 to TYTAN and hold.

\* When ALS inop, increase CAT AB RVR to 55, vis to 1 mile; CAT CDE vis to 1/8 miles.  
\*\* Circling not authorized N of Rwy 13-31.

ATIS <b>126.025 273.5</b>	OMAHA APP CON <b>124.5 263.0 (E)</b> <b>135.875 354.05 (W)</b>	TOWER <b>123.7 279.625</b>	GND CON <b>121.7 289.4</b>
------------------------------	--	-------------------------------	-------------------------------



EMERG SAFE ALT 100 NM 4700



3000 OFF R-136	TYTAN OFF 12	ELEV 1048	TDZE 1048		
Rwy 13 ldg 10,695'		Rwy 31 ldg 10,612'			
CATEGORY	A	B	C	D	E
S-ILS 13	1298/50		250	(300-1)	
S-LOC 13*	1560/50 512 (600-1)		1560/55 512 (600-1)		
CIRCLING**	1560-1 512 (600-1)		1660-1 612 (700-134)		1940-3 892 (900-3)
HIRL Rwy 13-31 Rwy 13-31 ALS nstd FAF to MAP 4.9 NM					
Knots		60	90	120	150 180
Min:Sec		4:54	3:16	2:27	1:58 1:38

OMAHA, NEBRASKA 41° 07' N-95° 54' W OFFUTT AFB (KOFF)

Amtd 1 18APR24

# ILS or LOC RWY 13

NC-2, 26 DEC 2024 to 23 JAN 2025

NC-2, 26 DEC 2024 to 23 JAN 2025