

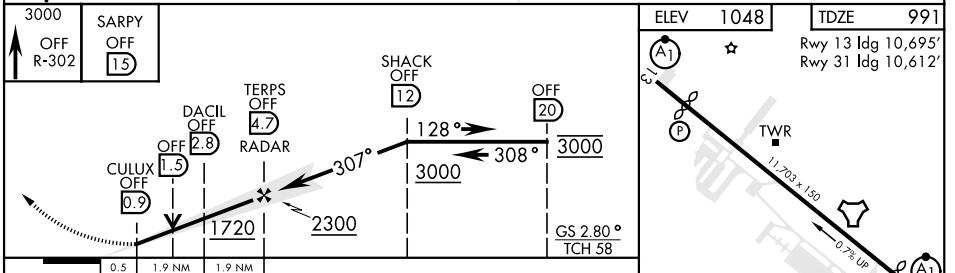
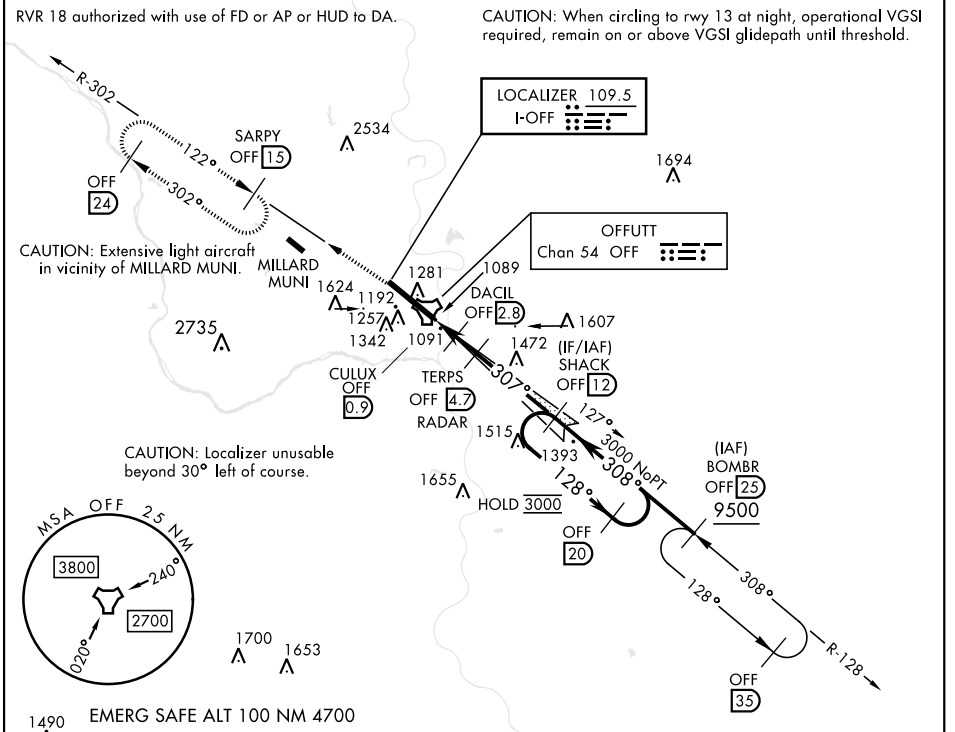
OMAHA, NEBRASKA

ILS or LOC Y RWY 31

LOC I-OFF 109.5	APCH CRS 307°	Rwy Ildg TDZE Arprt Elev 10,612 991 1048	[USAF]	OFFUTT AFB (KOFF)
---------------------------	-------------------------	--	--------	-------------------

RADAR or DME required.	ALSF-1 	MISSED APPROACH: Climb to 3000 via OFF TACAN R-302 to SARPY and hold.
------------------------	------------	---

ATIS 126.025 273.5	OMAHA APP CON 124.5 263.0 (E) 135.875 354.0 (W)	TOWER 123.7 279.625	GND CON 121.7 289.4
------------------------------	---	-------------------------------	-------------------------------



CATEGORY	A	B	C	D	E	ELEV 1048	TDZE 991
S-ILS 31 *		1192/24	200	(200-½)			Rwy 13 Ildg 10,695' Rwy 31 Ildg 10,612'
S-LOC 31 **	1360/24	368 (400-½)	1360/35	368 (400-¾)			HIRL Rwy 13-31 Rwy 13-31 ALS nstd
CIRCLING ***	FAF to MAP 3.8 NM						
	1500-1 452 (500-1)	1560-1 512 (600-1)	1660-1¾ 612 (700-1¾)	1940-3	892 (900-3)	Knots	60 90 120 150 180
					Min:Sec	3:48	2:32 1:54 1:31 1:16

OMAHA, NEBRASKA 41°07'N-95°54'W OFFUTT AFB (KOFF)

Amdt 1 22FEB24

ILS or LOC Y RWY 31

NC-2, 26 DEC 2024 to 23 JAN 2025

NC-2, 26 DEC 2024 to 23 JAN 2025