

TACAN Y RWY 13

TACAN OFF Chan 54	APCH CRS 122°	Rwy Ldg 10,695 TDZE 1048 Arprt Elev 1048
-----------------------------	-------------------------	---

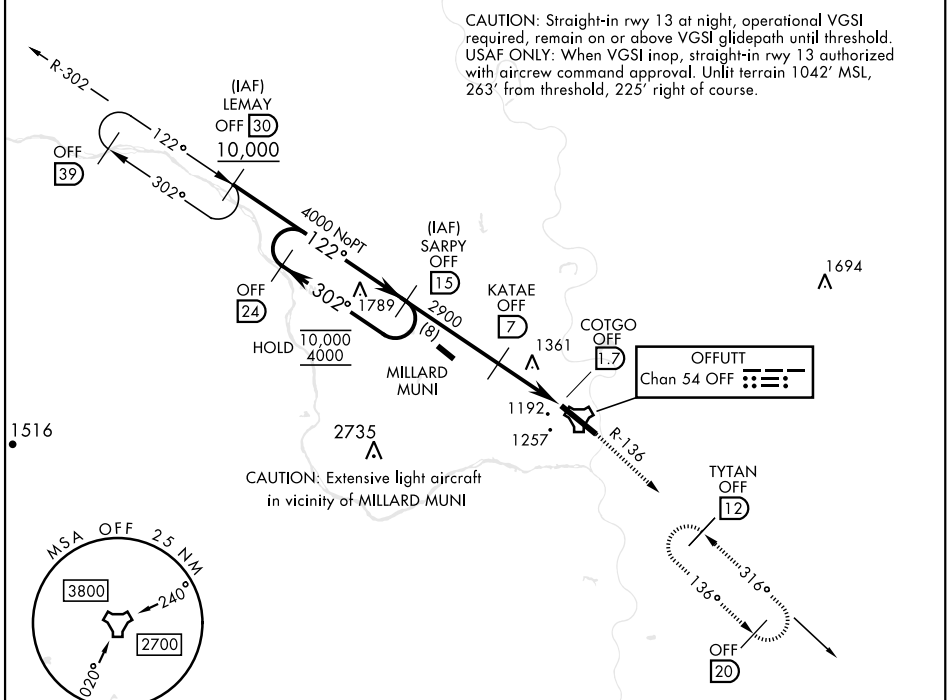
[USAF]

OFFUTT AFB (KOFF)

<p>▼ * When ALS inop, increase CAT AB RVR to 55, vis to 1 mile, CAT CDE vis to 1½ miles. ** Circling not authorized N of Rwy 13-31.</p>	<p>ALS F-1 (A1)</p>	<p>MISSED APPROACH: Climb to 3000 via OFF TACAN R-136 to TYTAN and hold.</p>
--	--------------------------------	--

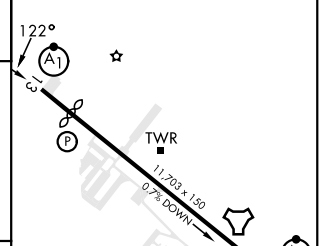
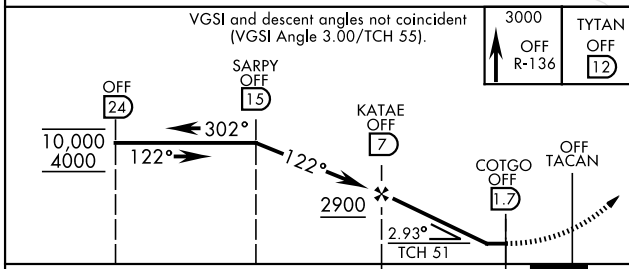
<p>ATIS 126.025 273.5</p>	<p>OMAHA APP CON 124.5 263.0 (E) 135.875 354.05 (W)</p>	<p>TOWER 123.7 279.625</p>	<p>GND CON 121.7 289.4</p>
--------------------------------------	---	---------------------------------------	---------------------------------------

CAUTION: Straight-in rwy 13 at night, operational VGSI required, remain on or above VGSI glidepath until threshold.
USAF ONLY: When VGSI inop, straight-in rwy 13 authorized with aircrew command approval. Unlit terrain 1042' MSL, 263' from threshold, 225' right of course.



EMERG SAFE ALT 100 NM 4700

ELEV 1048	TDZE 1048
Rwy 13 Ldg 10,695'	
Rwy 31 Ldg 10,612'	



CATEGORY	A	B	C	D	E
S-13 *	1620/50	572 (600-1)	1620-1¼	572 (600-1¼)	
C CIRCLING **	1620-1	572 (600-1)	1660-1¾ 612 (700-1¾)	1940-3	892 (900-3)

HIRL Rwy 13-31
Rwy 13-31 ALS nstd

TACAN Y RWY 13

NC-2, 26 DEC 2024 to 23 JAN 2025

NC-2, 26 DEC 2024 to 23 JAN 2025